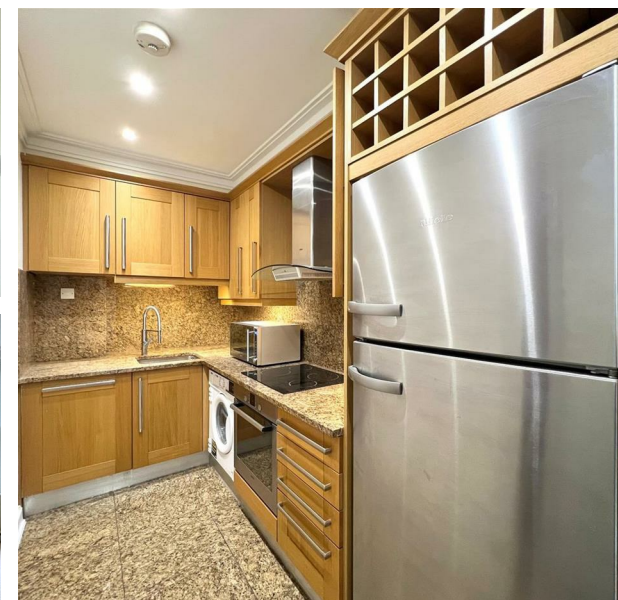


Flat 25 Hyde Park Place, London, W2 2LH
£1,600 Per Week

COMPLETION
SALES & LETTINGS



Flat 25 Hyde Park Place, London, W2 2LH

£1,600 Per Week

Council Tax Band: G

Hyde Park Place places you right opposite Hyde Park, in a prestigious, portered-mansion block with excellent transport connections. The mansion block features spacious, lift-accessed units with high rental and sales values reflective of the prime central London postcode. Nestled in the prestigious locality of Hyde Park, this charming two-bedroom, two-bathroom apartment offers a delightful blend of comfort and elegance. Spanning an impressive 1,100 square feet approx., the property is perfect for those seeking a spacious and inviting home in one of London's most sought-after locations. The apartment also features an exclusive balcony with views across Hyde Park.

Upon entering this grand mansion block, you are greeted by a dedicated concierge and a welcoming lobby which also serves a lift to all floors. The apartment itself is located on 3rd floor and features a well-proportioned reception room, ideal for both relaxation and entertaining. The natural light that floods this space creates a warm and welcoming atmosphere, making it the perfect spot to unwind after a busy day. The apartment features two generously sized bedrooms, providing ample space for rest and privacy.









337 Forest Road

London

E17 5JR

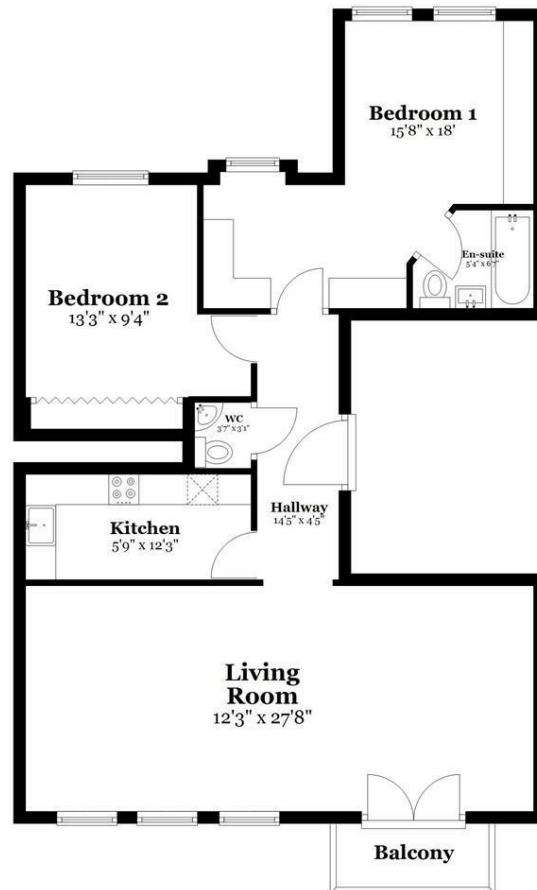
02085277007

enquiries@completion.co.uk

completion.co.uk

Ground Floor

Approx. 852.9 sq. feet



Total area: approx. 852.9 sq. feet

Energy Efficiency Rating		
	Current	Potential
Very energy efficient - lower running costs		
(92 plus) A		
(81-91) B		
(69-80) C	74	81
(55-68) D		
(39-54) E		
(21-38) F		
(1-20) G		
Not energy efficient - higher running costs		
England & Wales EU Directive 2002/91/EC		