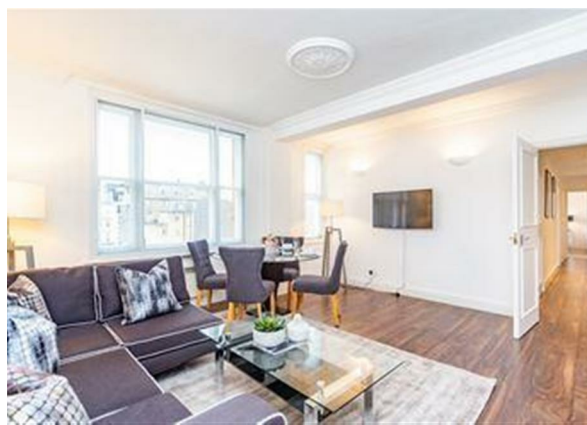
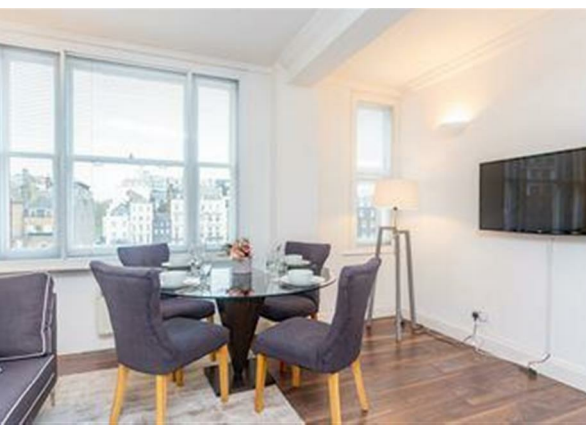
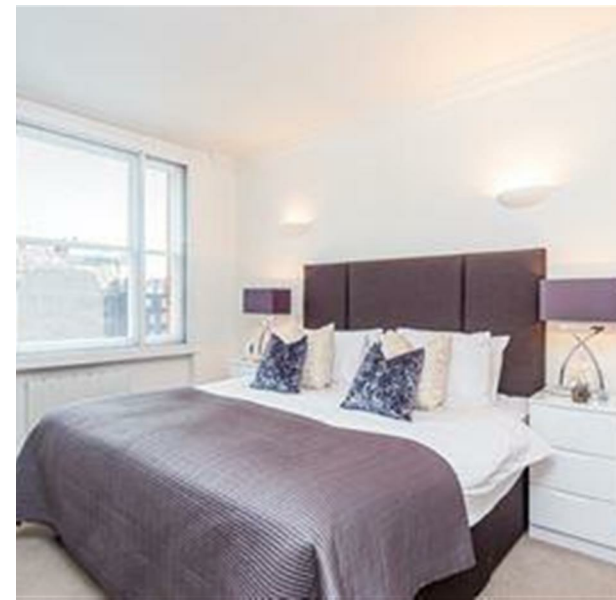


54 39 Hill Street,, Mayfair, London, W1J 5NA  
£1,280 Per Week

COMPLETION  
SALES & LETTINGS





54 39 Hill Street,, Mayfair, London, W1J 5NA

£1,280 Per Week

Council Tax Band:

Nestled in the heart of Mayfair, Hill Street presents an exceptional opportunity to acquire a stylish flat that perfectly balances comfort and convenience. Spanning an impressive 728 square feet, this well-appointed residence features two spacious bedrooms, each designed to provide a serene retreat from the bustling city life. The master bedroom boasts the added luxury of an ensuite bathroom, ensuring privacy and ease for its occupants.

The flat includes a welcoming reception room, ideal for entertaining guests or enjoying quiet evenings at home. The additional bathroom caters to the needs of residents and visitors alike, enhancing the practicality of this charming property.

One of the standout features of this flat is its excellent transport links, making it an ideal choice for those who commute or wish to explore the vibrant offerings of London. With a prime location in Mayfair, residents will find themselves surrounded by an array of high-end shops, fine dining establishments, and cultural













337 Forest Road

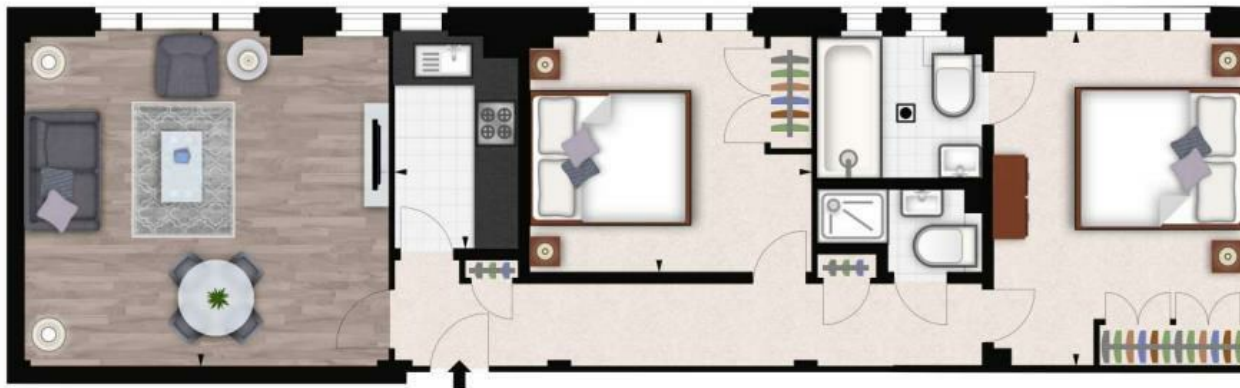
London

E17 5JR

02085277007

enquiries@completion.co.uk

completion.co.uk



| Energy Efficiency Rating                    |           |                         |
|---|-----------|-------------------------|
|   | Current   | Potential               |
| Very energy efficient - lower running costs |           |                         |
| (92 plus) <b>A</b>                          |           | <b>83</b>               |
| (81-91) <b>B</b>                            |           |                         |
| (69-80) <b>C</b>                            |           |                         |
| (55-68) <b>D</b>                            | <b>63</b> |                         |
| (39-54) <b>E</b>                            |           |                         |
| (21-38) <b>F</b>                            |           |                         |
| (1-20) <b>G</b>                             |           |                         |
| Not energy efficient - higher running costs |           |                         |
| England & Wales                             |           | EU Directive 2002/91/EC |