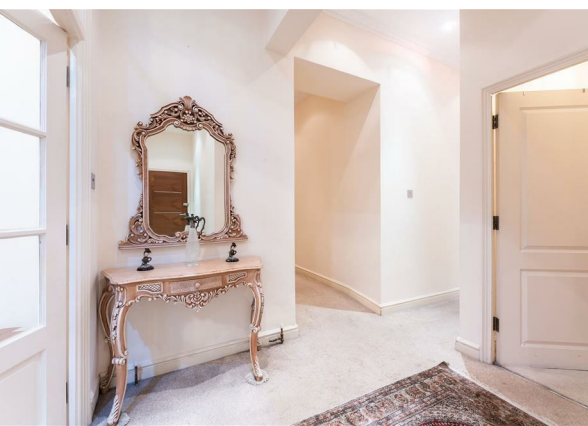
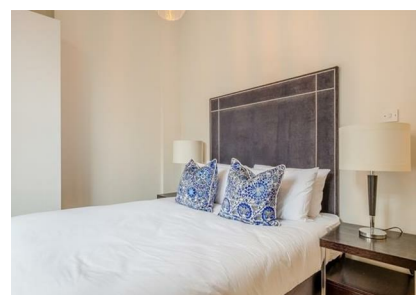


13 Sussex Gardens, London, W2 2RJ
£5,500 Per Month

COMPLETION
SALES & LETTINGS



13 Sussex Gardens, London, W2 2RJ

£5,500 Per Month

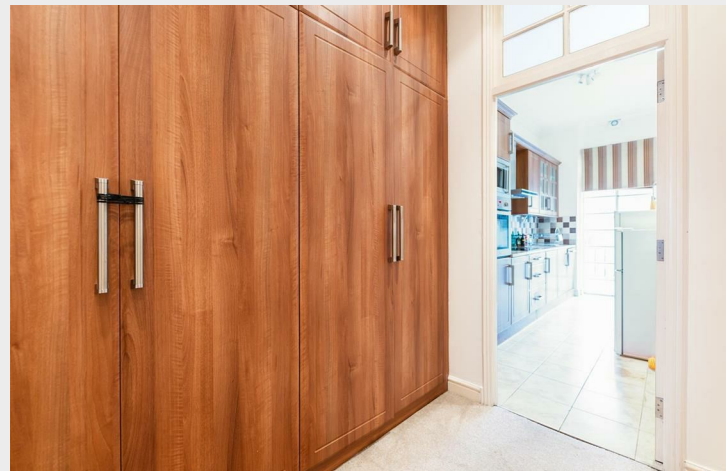
Council Tax Band: D

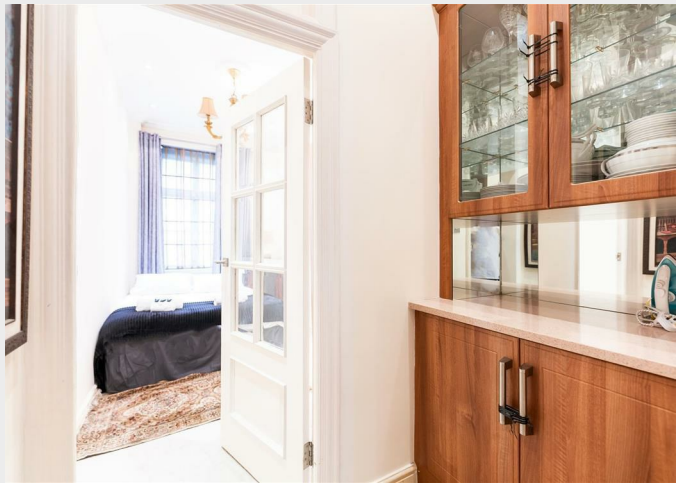
Nestled in the heart of Paddington, this splendid four-bedroom apartment on Sussex Gardens offers a unique blend of historical charm and modern convenience. Spanning an impressive 1,402 square feet, this flat is housed in a beautifully maintained building dating back to 1860, showcasing the elegance of Victorian architecture.

Upon entering, you are greeted by a spacious reception room that serves as the perfect gathering space for family and friends. The apartment boasts four well-proportioned bedrooms, providing ample space for both relaxation and privacy. With three bathrooms, morning routines are made effortless, catering to the needs of families or those who enjoy hosting guests.











Total area: approx. 1396.7 sq. feet
All measurements are appropriate and should not be relied upon.
Plan produced using PlanUp.

337 Forest Road

London

E17 5JR

02085277007

enquiries@completion.co.uk

completion.co.uk

