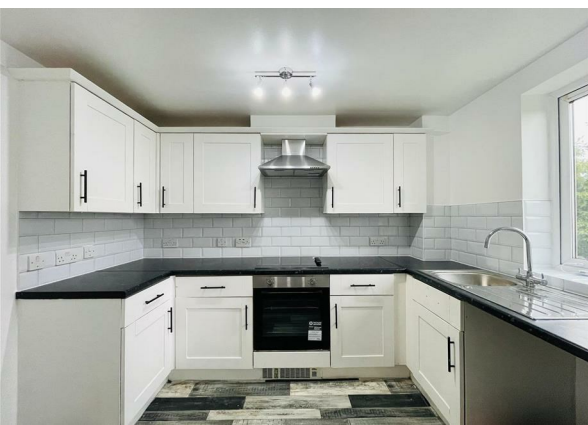
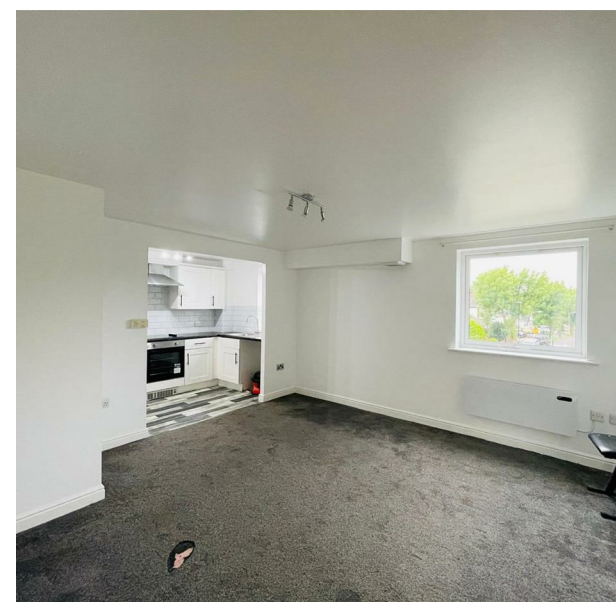


Flat 19, 2, Ashton Court Connington Crescent, London, E4 6LW
£1,800 Per Calendar Month

COMPLETION
SALES & LETTINGS



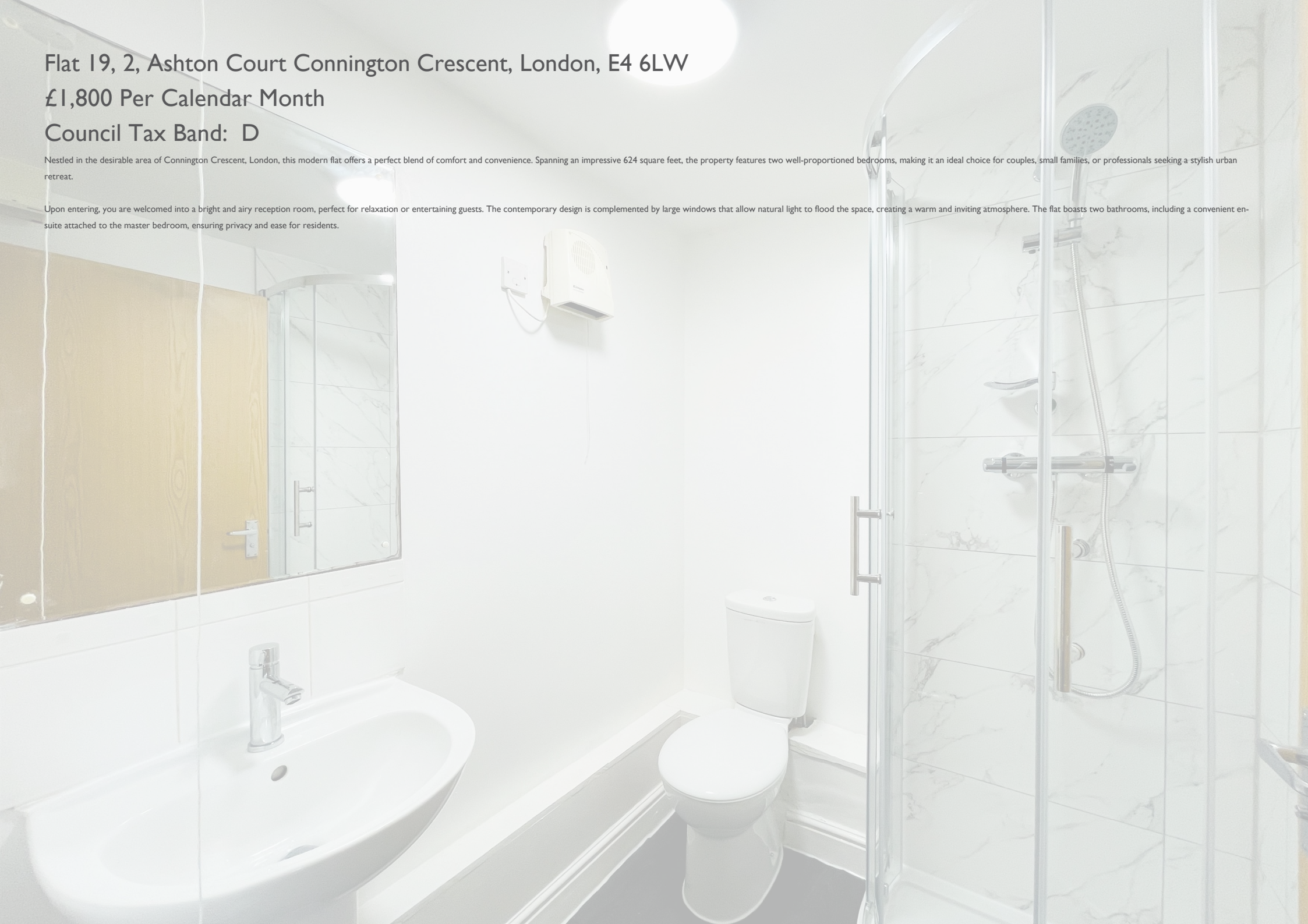
Flat 19, 2, Ashton Court Connington Crescent, London, E4 6LW

£1,800 Per Calendar Month

Council Tax Band: D

Nestled in the desirable area of Connington Crescent, London, this modern flat offers a perfect blend of comfort and convenience. Spanning an impressive 624 square feet, the property features two well-proportioned bedrooms, making it an ideal choice for couples, small families, or professionals seeking a stylish urban retreat.

Upon entering, you are welcomed into a bright and airy reception room, perfect for relaxation or entertaining guests. The contemporary design is complemented by large windows that allow natural light to flood the space, creating a warm and inviting atmosphere. The flat boasts two bathrooms, including a convenient en-suite attached to the master bedroom, ensuring privacy and ease for residents.



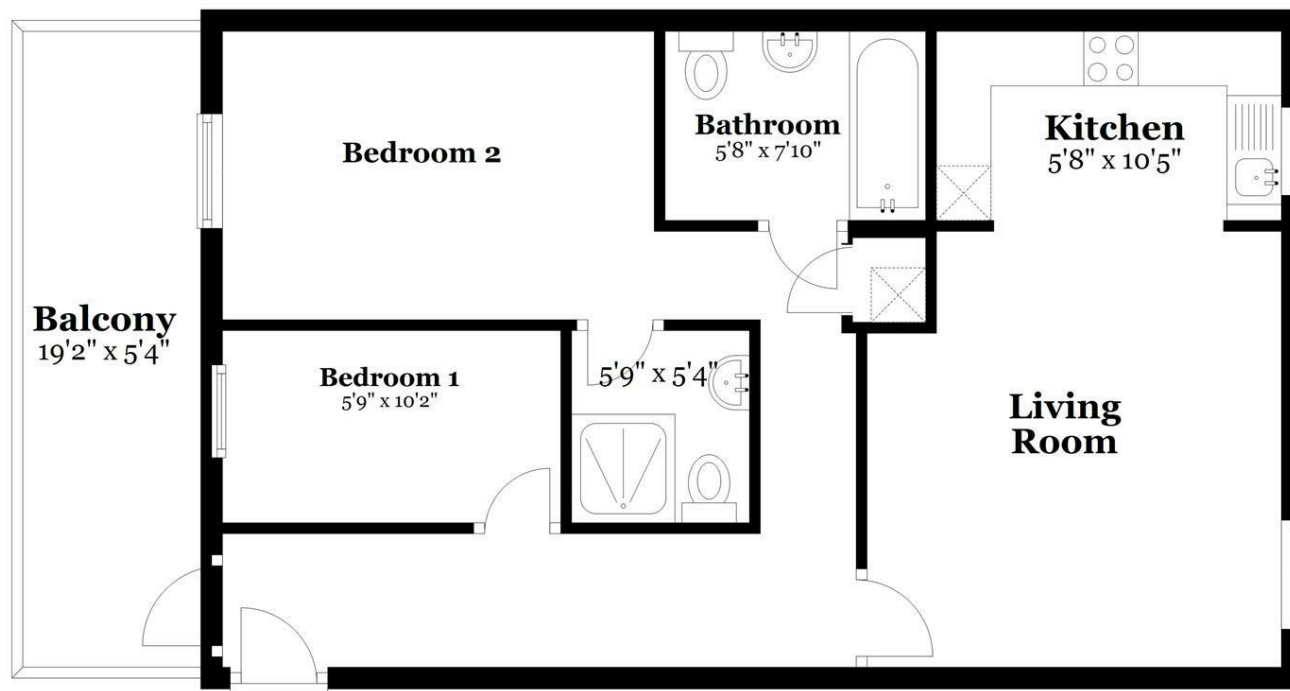






First Floor

Approx. 611.9 sq. feet



Total area: approx. 611.9 sq. feet

All measurements are appropriate and should not be relied upon.
Plan produced using PlanUp.

337 Forest Road

London

E17 5JR

02085277007

enquiries@completion.co.uk

completion.co.uk

Energy Efficiency Rating		
	Current	Potential
Very energy efficient - lower running costs		
(92 plus) A		
(81-91) B	81	84
(69-80) C		
(55-68) D		
(39-54) E		
(21-38) F		
(1-20) G		
Not energy efficient - higher running costs		
England & Wales EU Directive 2002/91/EC		