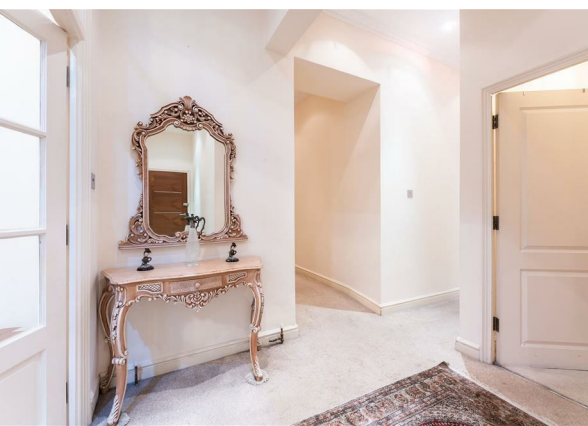
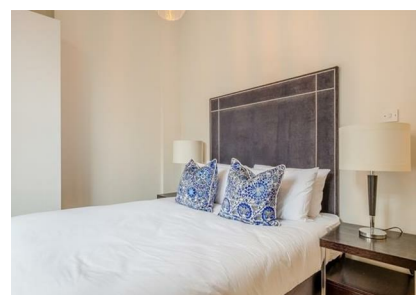


13 Sussex Gardens, London, W2 2RJ  
£5,500 Per Month

COMPLETION  
SALES & LETTINGS





# 13 Sussex Gardens, London, W2 2RJ

## £5,500 Per Month

### Council Tax Band:

Nestled in the charming Sussex Gardens, this splendid flat offers a unique blend of historical elegance and modern comfort. Spanning an impressive 1,512 square feet, the property boasts four spacious bedrooms, making it an ideal home for families or those seeking extra space for guests or a home office.

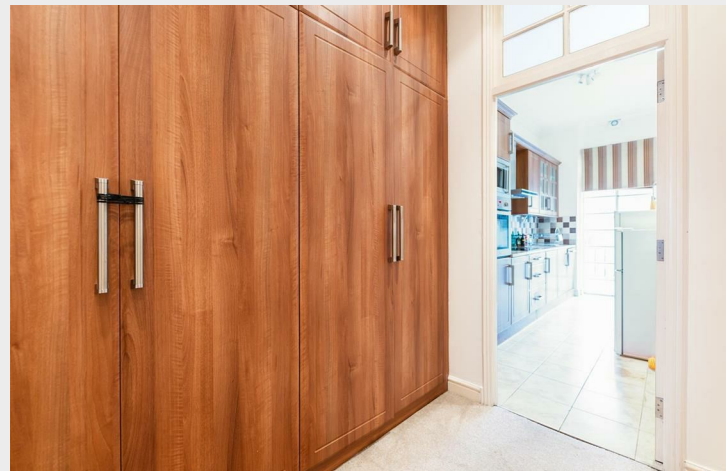
Upon entering, you are greeted by a welcoming reception room that serves as the heart of the home, perfect for entertaining or relaxing after a long day. The flat features a well-appointed bathroom, ensuring convenience for all residents.

Built in 1860, this property carries a rich history, with architectural details that reflect its Victorian heritage. The high ceilings and large windows allow natural light to flood the living spaces, creating a warm and inviting atmosphere throughout.

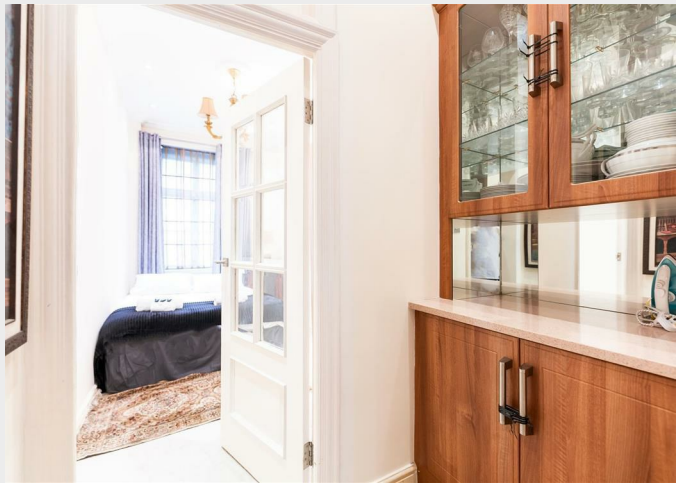














Total area: approx. 1402.6 sq. feet  
All measurements are appropriate and should not be relied upon.  
Plan produced using PlanUp.

337 Forest Road  
London  
E17 5JR  
02085277007  
enquiries@completion.co.uk  
completion.co.uk

Energy Efficiency Rating		
	Current	Potential
Very energy efficient - lower running costs		
(92 plus) <b>A</b>		
(81-91) <b>B</b>		
(69-80) <b>C</b>	69	82
(55-68) <b>D</b>		
(39-54) <b>E</b>		
(21-38) <b>F</b>		
(1-20) <b>G</b>		
Not energy efficient - higher running costs		
England & Wales EU Directive 2002/91/EC		