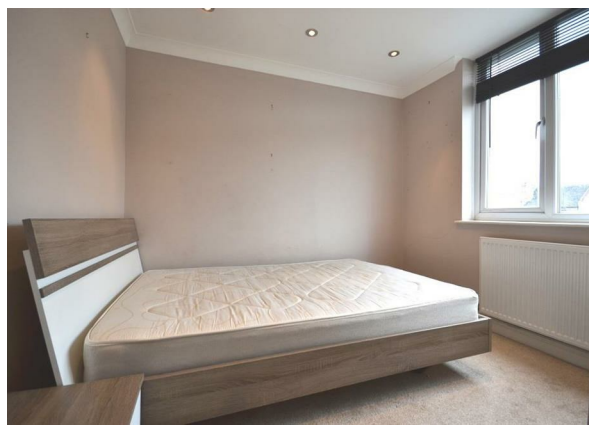
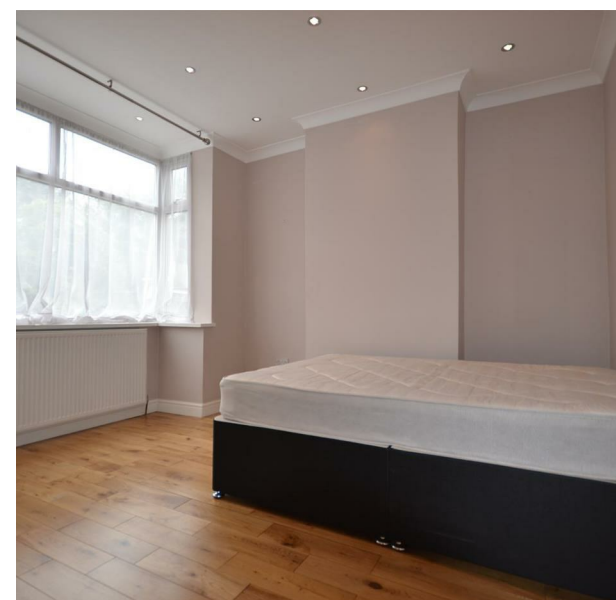


36 Luton Road, Walthamstow, London, Greater London, E17 5LN  
£3,300 Per Month

**COMPLETION**  
SALES & LETTINGS





36 Luton Road, Walthamstow, London, Greater London, E17 5LN

£3,300 Per Month

Council Tax Band: C

Welcome to this splendid modern terraced house located on Luton Road in the vibrant area of Walthamstow, E17. This impressive property is available for rent at £3,300 per calendar month, offering an ideal home for families or professionals seeking spacious living in a desirable location.

The house boasts four well-proportioned bedrooms, providing ample space for relaxation and privacy. With three bathrooms, morning routines will be a breeze, ensuring convenience for all residents. The two inviting reception rooms offer versatile spaces that can be tailored to your lifestyle, whether you prefer a cosy sitting area or a formal dining space for entertaining guests.

The modern design of the property enhances its appeal, featuring contemporary finishes and fixtures throughout. This home is not only stylish but also functional, making it perfect for those who appreciate both comfort and aesthetics.





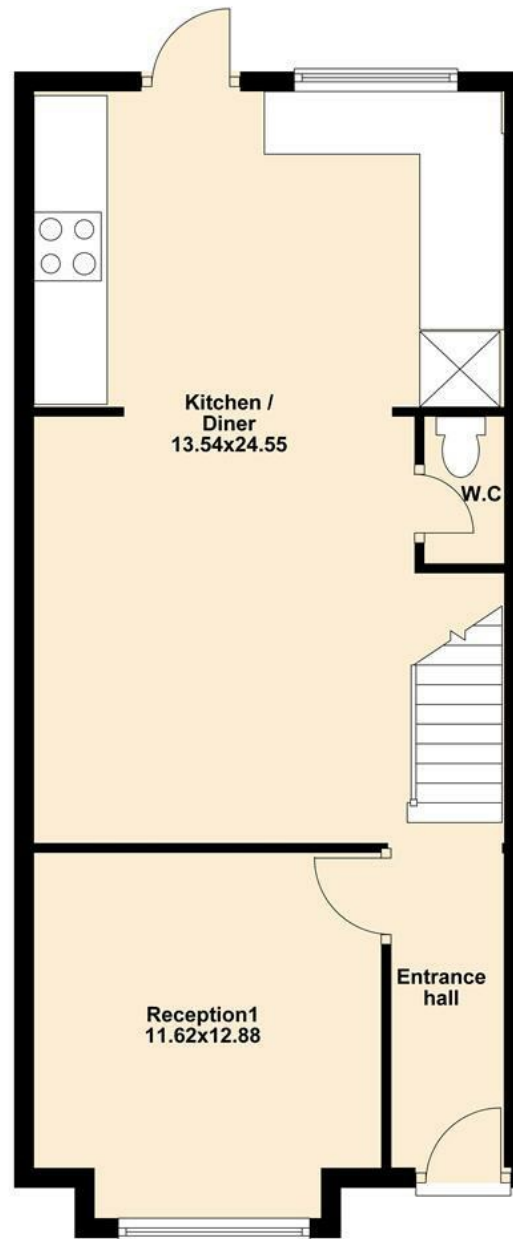








**Ground Floor**  
Approx. 52.3 sq. metres (562.6 sq. feet)



337 Forest Road  
London  
E17 5JR  
02085277007  
enquiries@completion.co.uk  
completion.co.uk

Energy Efficiency Rating		
	Current	Potential
Very energy efficient - lower running costs		
(92 plus) <b>A</b>		
(81-91) <b>B</b>		<b>83</b>
(69-80) <b>C</b>	<b>70</b>	
(55-68) <b>D</b>		
(39-54) <b>E</b>		
(21-38) <b>F</b>		
(1-20) <b>G</b>		
Not energy efficient - higher running costs		
England & Wales EU Directive 2002/91/EC		