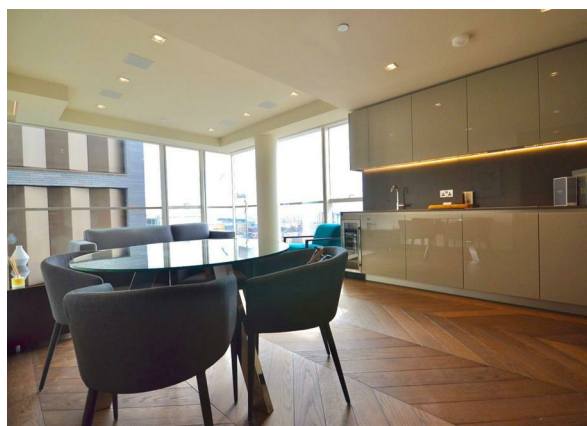
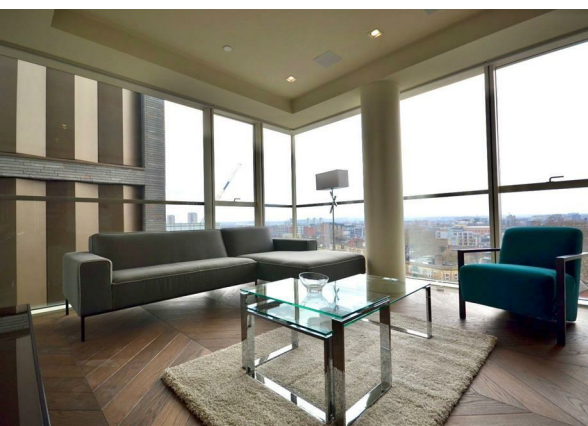
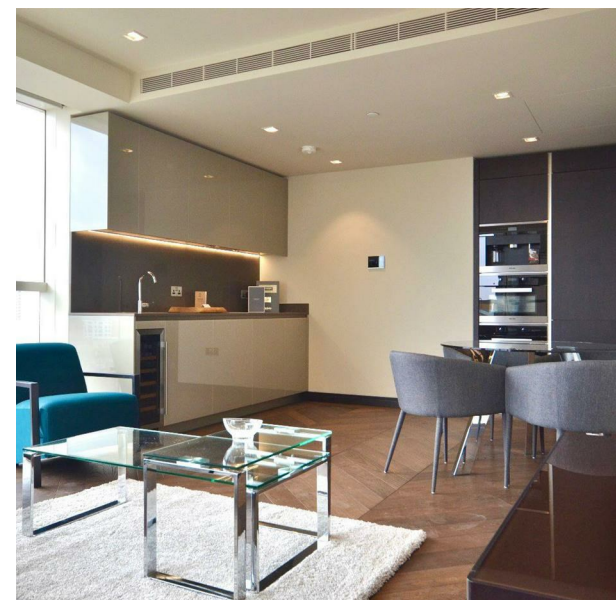
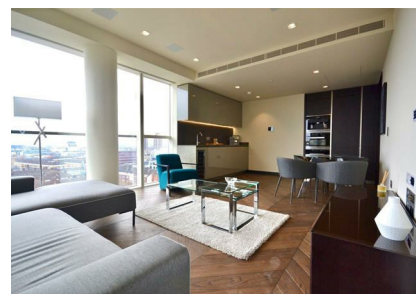
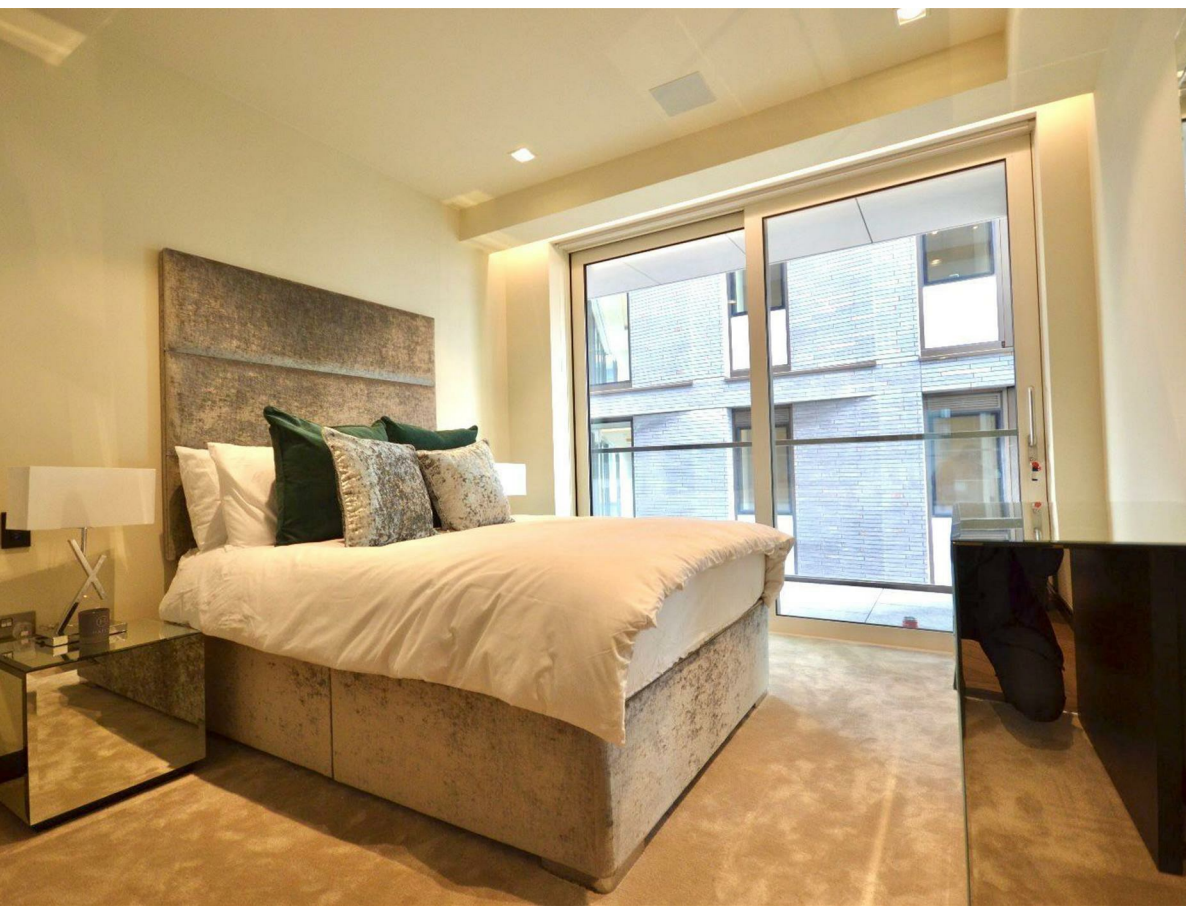


Flat 58, One Tower Bridge Sandringham House, Duchess Walk, London,
Greater London, SE1 2QX

£5,000 Per Month

COMPLETION
SALES & LETTINGS



Flat 58, One Tower Bridge Sandringham House, Duchess Walk, London, Greater London, SE1 2QX

£5,000 Per Month

Council Tax Band: F

Nestled in the heart of London, this exquisite two-bedroom apartment at One Tower Bridge offers a unique opportunity to experience the vibrant lifestyle of the city. With a rental price of £1,153 per week, this modern flat spans an impressive 807 square feet, providing ample space for comfortable living.

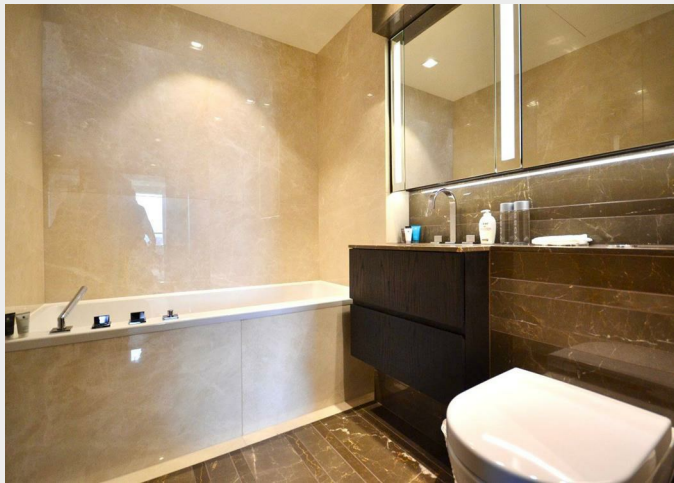
The apartment features a well-appointed reception room, perfect for entertaining guests or enjoying a quiet evening in. The two spacious bedrooms are designed to offer a peaceful retreat, while the two contemporary bathrooms ensure convenience and privacy for all residents.

One Tower Bridge is not just a residence; it is a gateway to the iconic sights and sounds of London. Living here means you are just a stone's throw away from the majestic Tower Bridge, a symbol of the city's rich history and architectural beauty. The surrounding area boasts a plethora of restaurants, shops, and cultural attractions, making it an ideal location for those who appreciate the best that urban living has to offer.









Eight Floor

Approx. 75.0 sq. metres (807.2 sq. feet)



Total area: approx. 75.0 sq. metres (807.2 sq. feet)

All measurements are appropriate and should not be relied upon.
Plan produced using PlanUp.

337 Forest Road

London

E17 5JR

02085277007

enquiries@completion.co.uk

completion.co.uk

Energy Efficiency Rating		
	Current	Potential
Very energy efficient - lower running costs		
(92 plus) A		
(81-91) B	84	84
(69-80) C		
(55-68) D		
(39-54) E		
(21-38) F		
(1-20) G		
Not energy efficient - higher running costs		
EU Directive 2002/91/EC		
England & Wales		