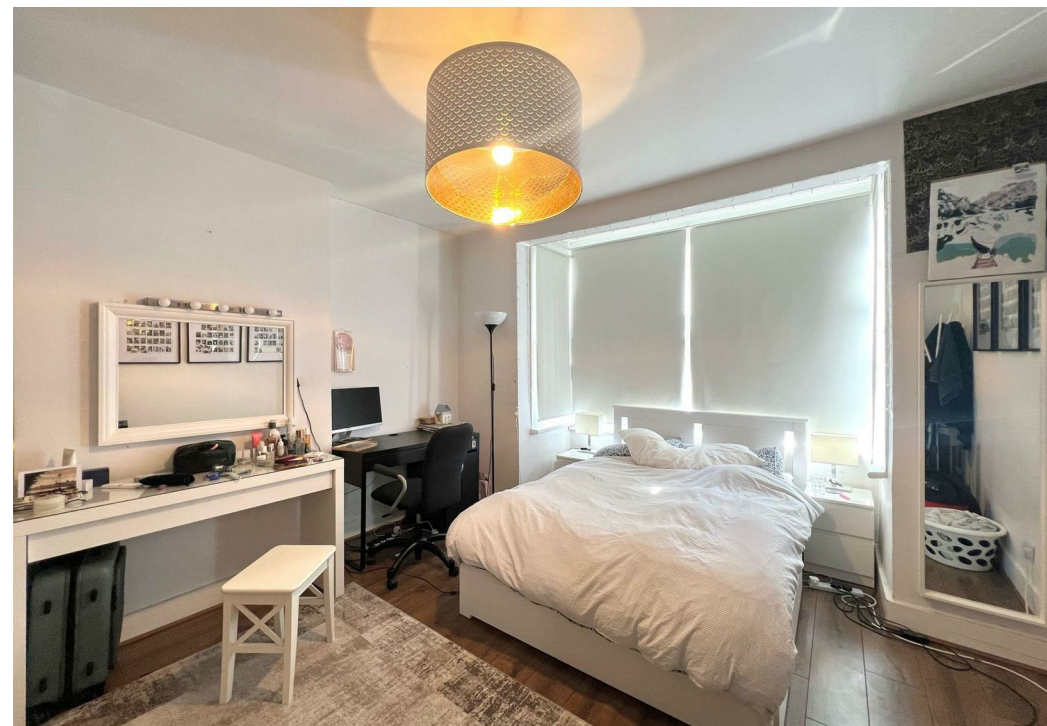
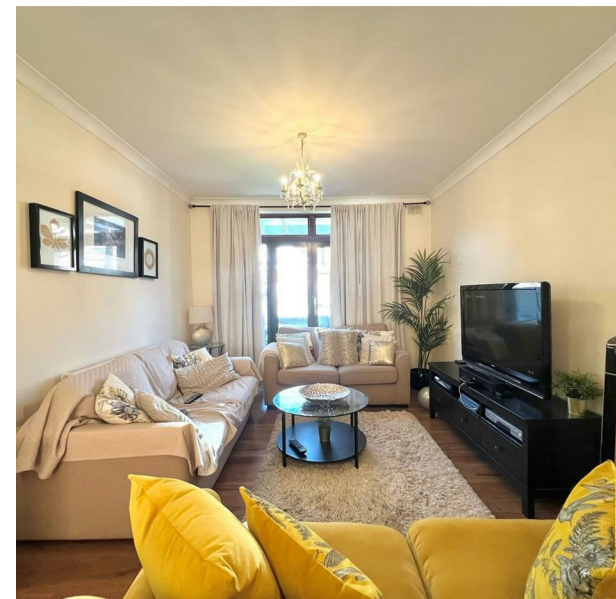
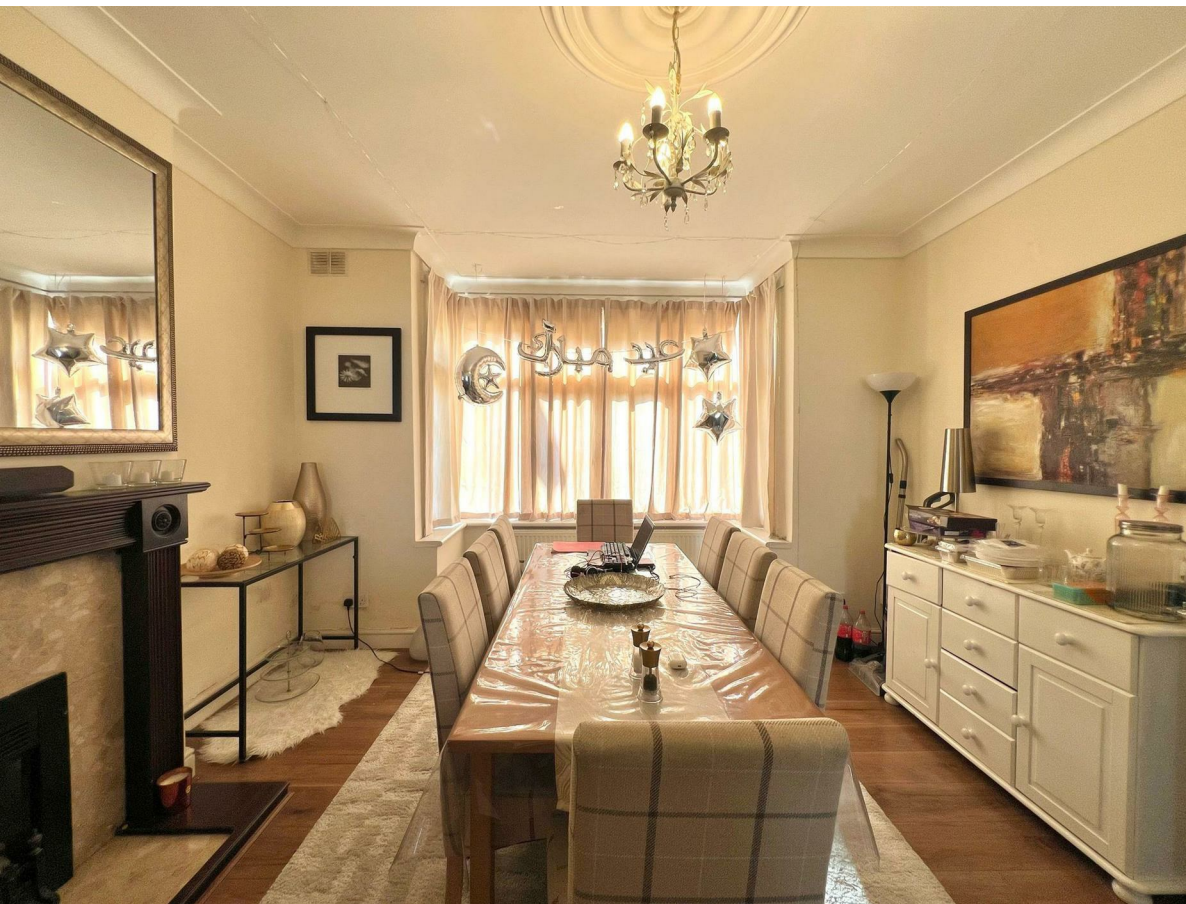


29 Pentire Road, London, Greater London, E17 4BY  
£3,200 Per Month

COMPLETION  
SALES & LETTINGS





29 Pentire Road, London, Greater London, E17 4BY

£3,200 Per Month

Council Tax Band: D

Nestled in the vibrant area of Walthamstow, this charming five-bedroom terraced house on Pentire Road offers a delightful blend of space and comfort, making it an ideal family home. Available for rent at £3,200 per calendar month, this property boasts two generous reception rooms, perfect for entertaining guests or enjoying family time.

The five well-proportioned bedrooms provide ample space for relaxation and privacy, catering to the needs of a growing family or those who require extra room for guests or a home office. With three bathrooms, morning routines will be a breeze, ensuring convenience for all residents.

This older property exudes character and warmth, with features that reflect its history while providing the modern comforts expected in today's homes. The location is particularly appealing, with Walthamstow's diverse amenities, parks, and excellent transport links just a stone's throw away, making it easy to explore















337 Forest Road  
 London  
 E17 5JR  
 02085277007  
[enquiries@completion.co.uk](mailto:enquiries@completion.co.uk)  
[completion.co.uk](http://completion.co.uk)

