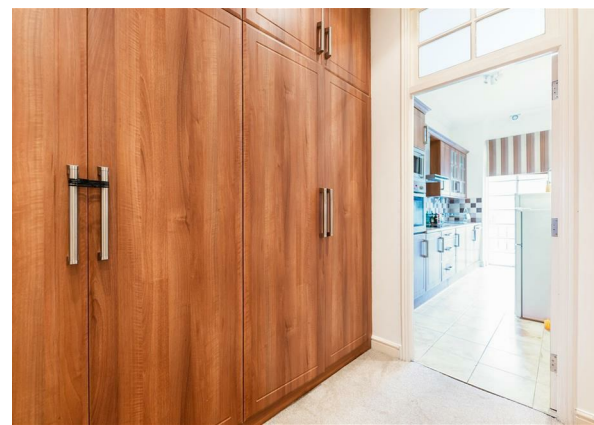
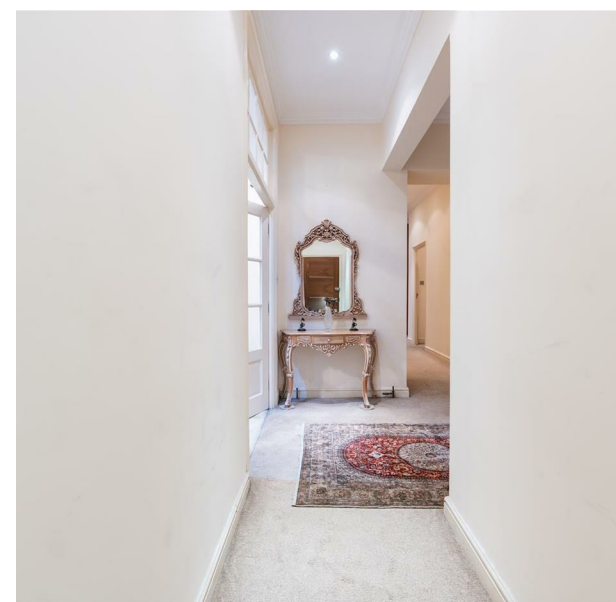


Flat 26, 207 Sussex Gardens, London, W2 2RJ  
£6,000 Per Month

COMPLETION  
SALES & LETTINGS



Flat 26, 207 Sussex Gardens, London, W2 2RJ

£6,000 Per Month

Council Tax Band:

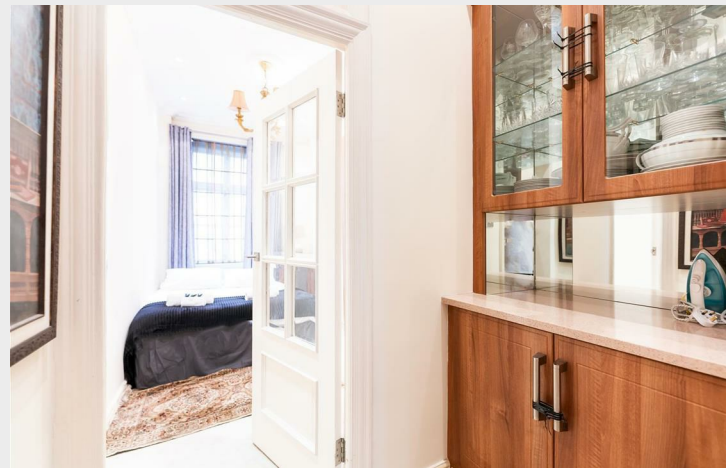
Nestled in the charming Sussex Gardens, London, this splendid flat offers a delightful blend of historical elegance and modern comfort. Spanning an impressive 1,512 square feet, the property boasts four spacious bedrooms, providing ample room for family living or accommodating guests.

The flat features a well-appointed reception room, perfect for entertaining or relaxing after a long day. The layout is thoughtfully designed, ensuring that each bedroom is generously sized, allowing for a comfortable and inviting atmosphere. Additionally, the property includes a convenient en-suite bathroom, enhancing the privacy and convenience for the occupants of the master bedroom.

Built in 1860, this residence exudes character and charm, with period features that reflect its rich history. The high ceilings and large windows allow natural light to flood the space, creating a warm and welcoming environment.











Total area: approx. 1402.6 sq. feet  
All measurements are appropriate and should not be relied upon.  
Plan produced using PlanUp.

337 Forest Road  
London  
E17 5JR  
02085277007  
enquiries@completion.co.uk  
completion.co.uk

Energy Efficiency Rating		
	Current	Potential
Very energy efficient - lower running costs		
(92 plus) <b>A</b>		
(81-91) <b>B</b>		
(69-80) <b>C</b>	69	82
(55-68) <b>D</b>		
(39-54) <b>E</b>		
(21-38) <b>F</b>		
(1-20) <b>G</b>		
Not energy efficient - higher running costs		
England & Wales EU Directive 2002/91/EC		