

Flat 26 2-4 Forest Drive East, London, E11 1JX  
£1,950 Per Month

COMPLETION  
SALES & LETTINGS





**Flat 26 2-4 Forest Drive East, London, E11 1JX**

**£1,950 Per Month**

**Council Tax Band: B**

Welcome to this modern two-bedroom flat located on Forest Drive East in the desirable area of Leytonstone, E11. Available to let at a competitive price of £1,950 per calendar month, this ground floor property offers a perfect blend of comfort and convenience.

Upon entering, you will find a spacious reception room that provides an inviting space for relaxation and entertainment. The flat boasts two well-proportioned bedrooms, ideal for a small family or professionals seeking a comfortable living arrangement. With two bathrooms, including an en-suite, the property ensures ample facilities for all occupants, enhancing both privacy and convenience.

The modern design of the flat is complemented by its practical layout, making it an excellent choice for those who appreciate contemporary living. Situated in a vibrant neighbourhood, residents will benefit from easy access to local amenities, parks, and excellent transport links, ensuring that the hustle and bustle of



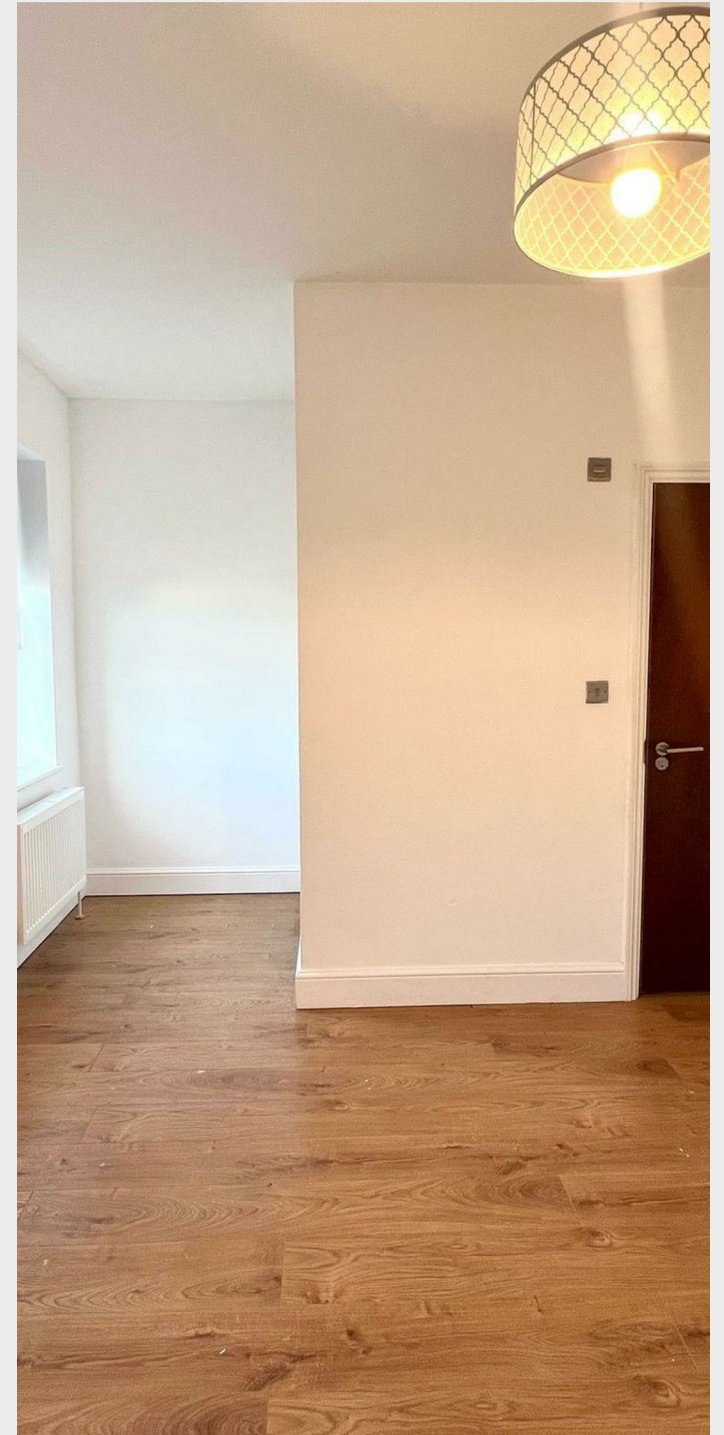












337 Forest Road

London

E17 5JR

02085277007

enquiries@completion.co.uk

completion.co.uk

