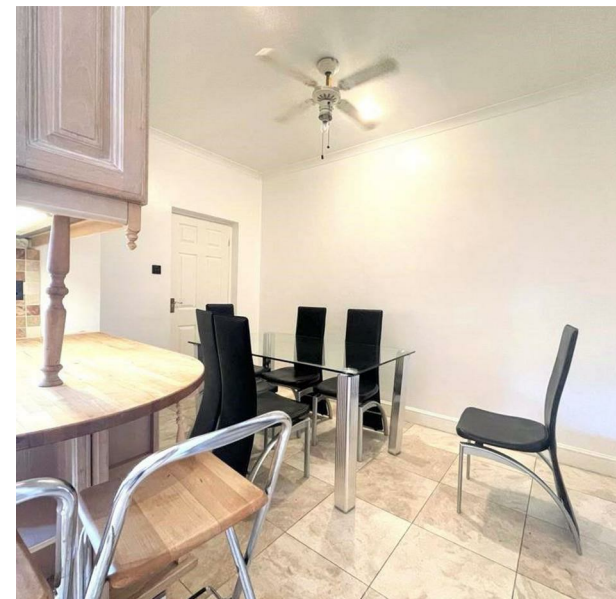
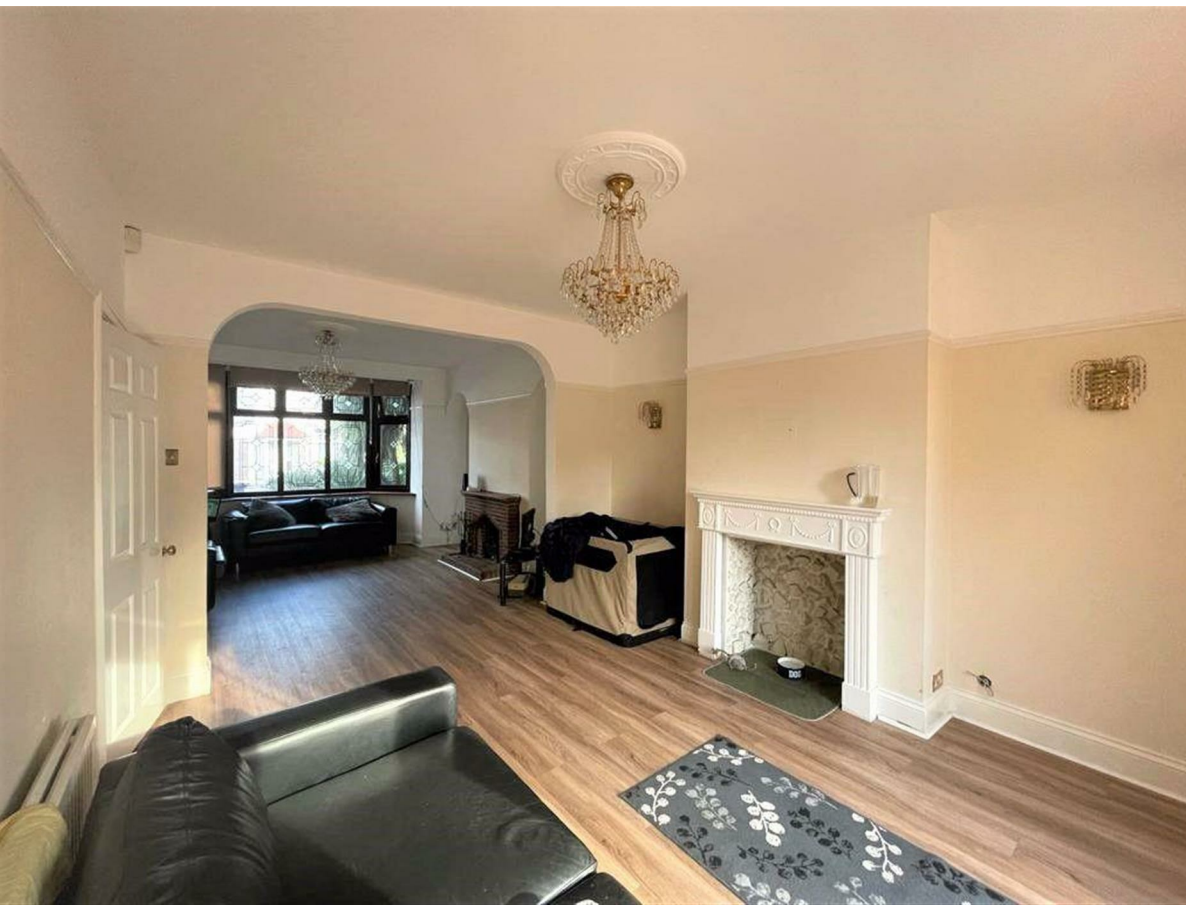


23 Monmouth Avenue, South Woodford, Greater London, E18 1NU  
£3,600 Per Month

**COMPLETION**  
SALES & LETTINGS





23 Monmouth Avenue, South Woodford, Greater London, E18 1NU

£3,600 Per Month

Council Tax Band: F

Nestled in the charming area of South Woodford, E18, this impressive six-bedroom house is now available to let for £3,600 per calendar month. This property is perfect for families or groups seeking ample space and comfort in a desirable location.

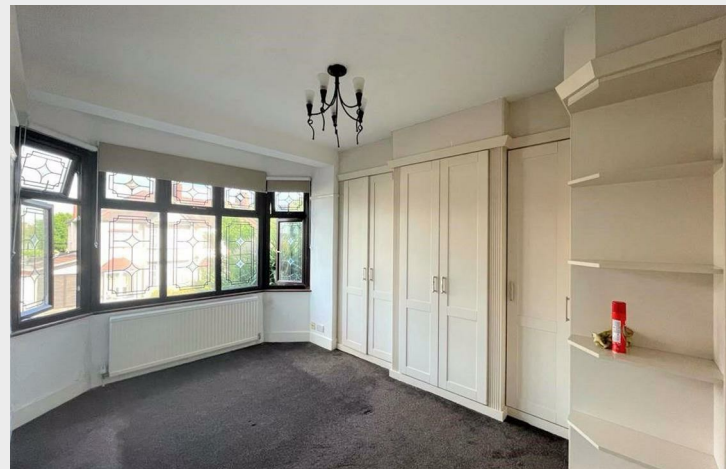
As you enter, you are greeted by two spacious reception rooms, ideal for both relaxation and entertaining guests. The layout of the house is thoughtfully designed, providing a harmonious flow throughout. With six well-proportioned bedrooms, there is plenty of room for everyone to enjoy their own private space.

The property boasts three bathrooms, including a convenient WC, ensuring that morning routines and family life can proceed smoothly without the usual congestion. The older style of the house adds character and charm, making it a unique place to call home.













337 Forest Road  
 London  
 E17 5JR  
 02085277007  
[enquiries@completion.co.uk](mailto:enquiries@completion.co.uk)  
[completion.co.uk](http://completion.co.uk)

