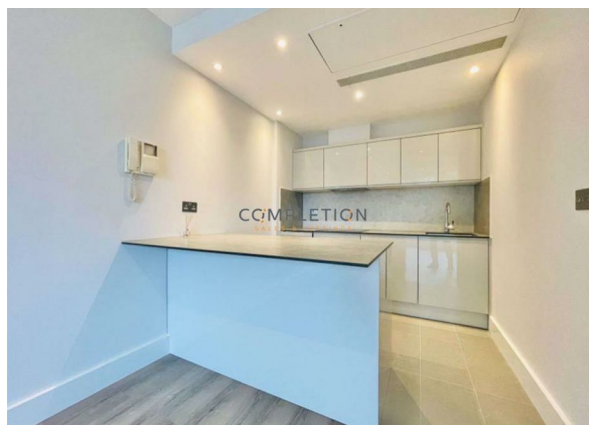


305 Westcliffe Apartments, West End Quay South Wharf Road, London,
Greater London, W2 1JB

Offered From £650,000

COMPLETION
SALES & LETTINGS



305 Westcliffe Apartments, West End Quay South Wharf Road, London, Greater London, W2 1JB

Offers In Excess Of £500,000

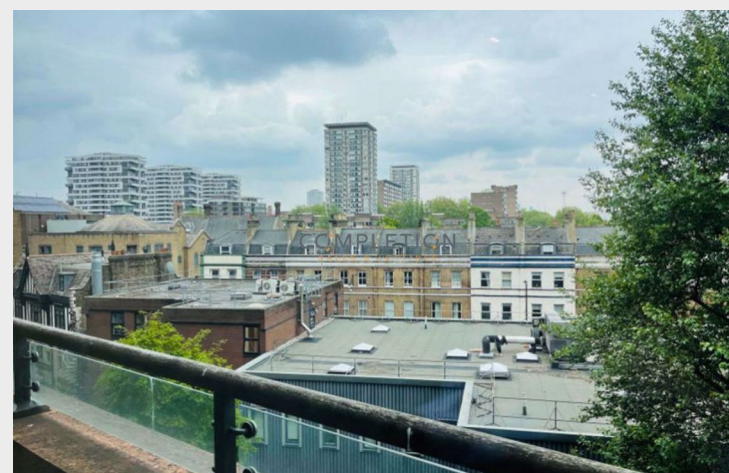
Council Tax Band: B

CHAIN FREE | EXCELLENT LOCATION | CONCIERGE | BALCONY

Completion Lettings are now offering a grand one bedroom apartment positioned in a location of sheer prominence.









Third Floor

Approx. 47.2 sq. metres (508.1 sq. feet)



Total area: approx. 47.2 sq. metres (508.1 sq. feet)

All measurements are appropriate and should not be relied upon.
Plan produced using PlanUp.

337 Forest Road

London

E17 5JR

02085277007

enquiries@completion.co.uk

completion.co.uk

Energy Efficiency Rating		
	Current	Potential
Very energy efficient - lower running costs		
(92 plus) A		
(81-91) B		
(69-80) C		
(55-68) D		
(39-54) E		
(21-38) F		
(1-20) G		
Not energy efficient - higher running costs		
England & Wales EU Directive 2002/91/EC		