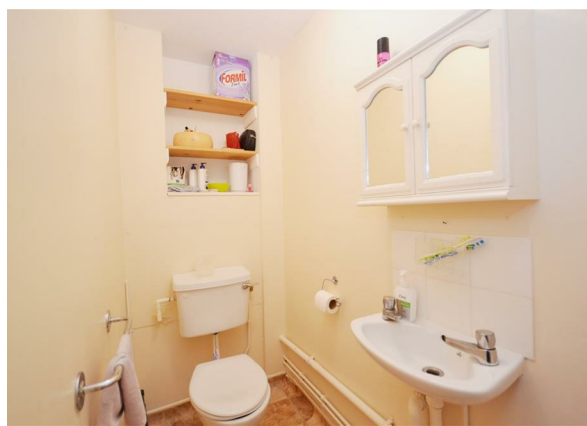
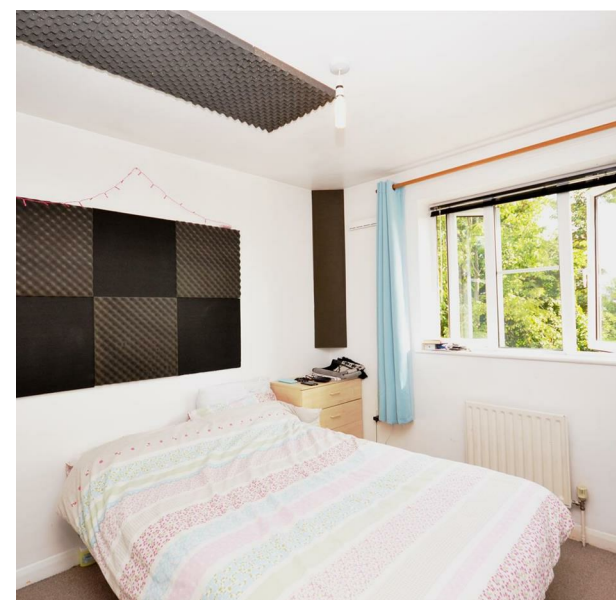


16 Lisbon Close, London, Greater London, E17 5YB
Price Guide £550,000

COMPLETION
SALES & LETTINGS



I6 Lisbon Close, London, Greater London, E17 5YB

Price Guide £550,000

Council Tax Band: C

THREE BEDROOMS | FIRST FLOOR BATHROOM | GROUND FLOOR W.C. | PRIVATE GARDEN | PRIVATE PARKING | IDEAL FOR FAMILIES | CHAIN FREE

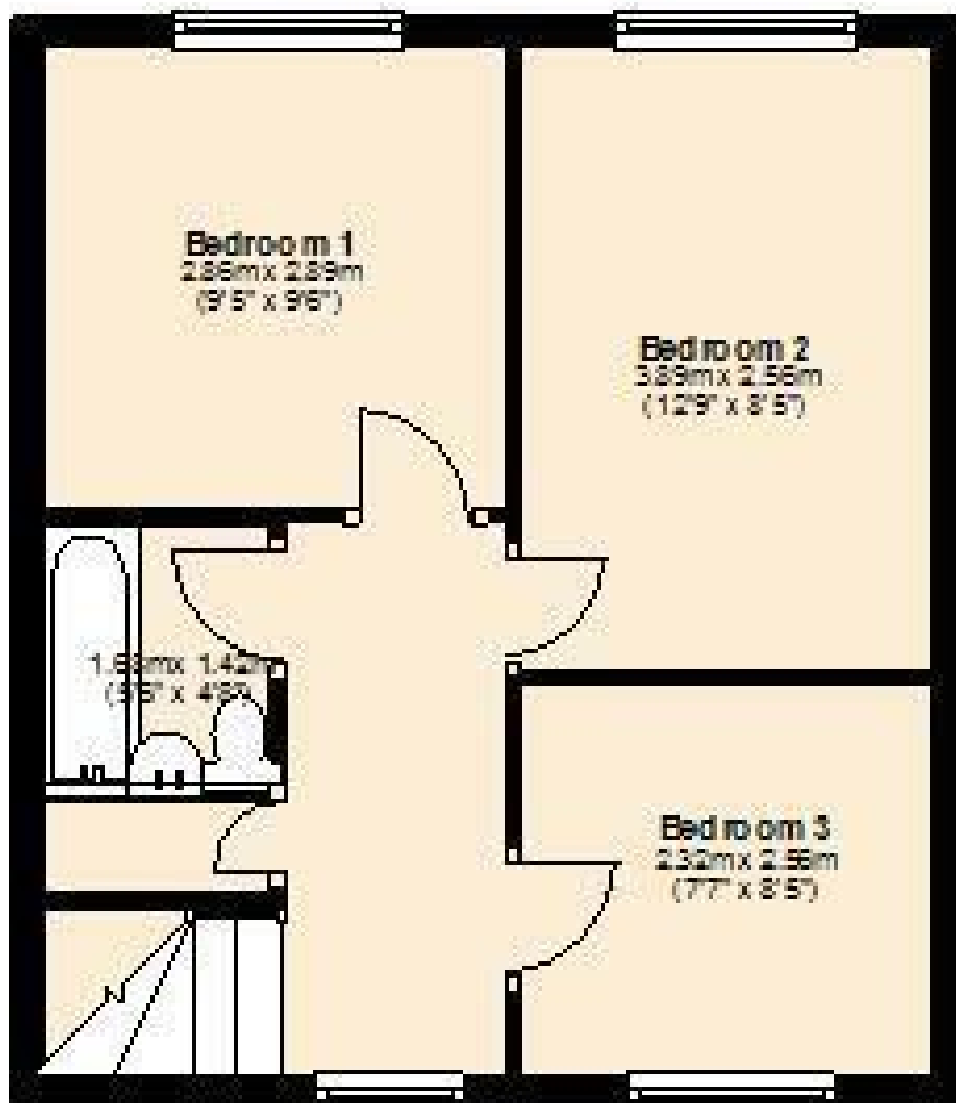
Located in a convenient part of Walthamstow, this excellent three bedroom house comes with front parking.





First Floor

Approx. 32.7 sq. metres (351.9 sq. feet)



337 Forest Road

London

E17 5JR

02085277007

enquiries@completion.co.uk

completion.co.uk

Energy Efficiency Rating		
	Current	Potential
Very energy efficient - lower running costs		
(92 plus) A		
(81-91) B		
(69-80) C		
(55-68) D		
(39-54) E		
(21-38) F		
(1-20) G		
Not energy efficient - higher running costs		
England & Wales		EU Directive 2002/91/EC