

26 Halford Road, Walthamstow, London, Greater London, E10 6DR  
£3,500 Per Month

**COMPLETION**  
SALES & LETTINGS



26 Halford Road, Walthamstow, London, Greater London, E10 6DR

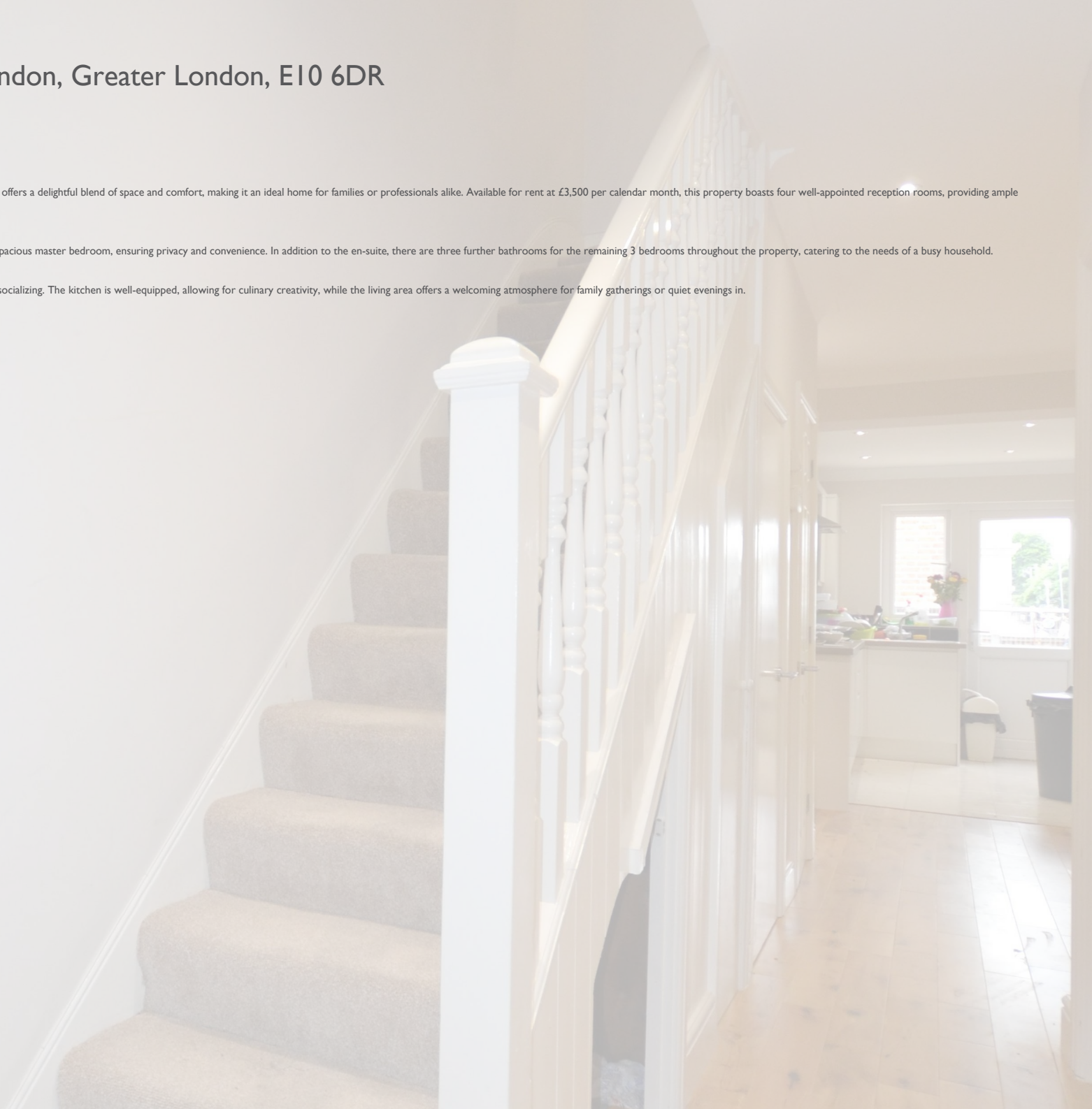
£3,500 Per Month

Council Tax Band: E

Nestled in the vibrant area of Walthamstow, this charming end-terrace house on Halford Road offers a delightful blend of space and comfort, making it an ideal home for families or professionals alike. Available for rent at £3,500 per calendar month, this property boasts four well-appointed reception rooms, providing ample space for relaxation and entertainment.

The house features three generously sized bedrooms, each designed with comfort in mind. A spacious master bedroom, ensuring privacy and convenience. In addition to the en-suite, there are three further bathrooms for the remaining 3 bedrooms throughout the property, catering to the needs of a busy household.

The separate kitchen and living space create a functional layout, perfect for both cooking and socializing. The kitchen is well-equipped, allowing for culinary creativity, while the living area offers a welcoming atmosphere for family gatherings or quiet evenings in.

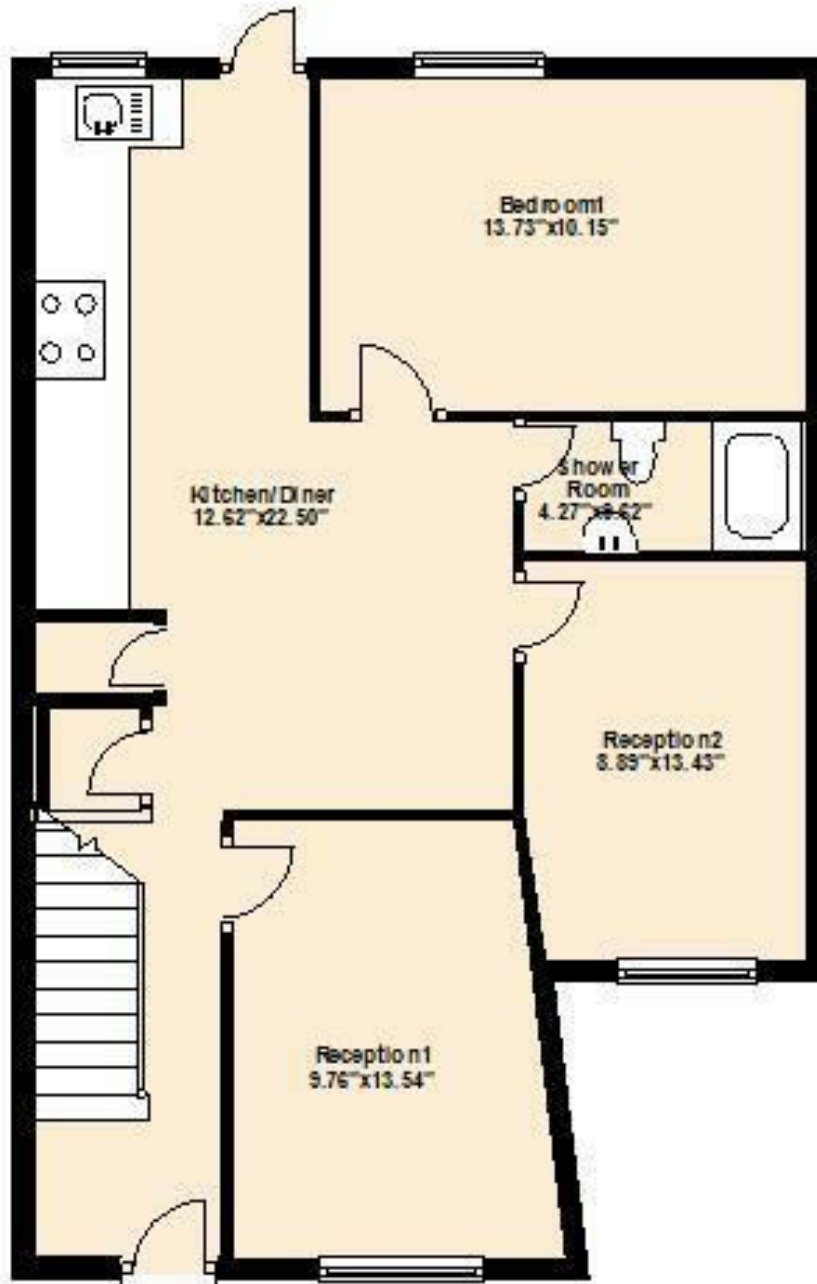








**Ground Floor**  
Approx. 70.3 sq. metres (757.2 sq. feet)



337 Forest Road  
London  
E17 5JR  
02085277007  
enquiries@completion.co.uk  
completion.co.uk

Energy Efficiency Rating		Current	Potential
Very energy efficient - lower running costs			
(92 plus) A			
(81-91) B			
(69-80) C			
(55-68) D		62	69
(39-54) E			
(21-38) F			
(1-20) G			
Not energy efficient - higher running costs			
England & Wales		EU Directive 2002/91/EC	