

Flat 1 Forest Drive East, London, Greater London, E11 1JX
£2,600 Per Month

COMPLETION
SALES & LETTINGS



Flat 1 Forest Drive East, London, Greater London, E11 1JX

£2,600 Per Month

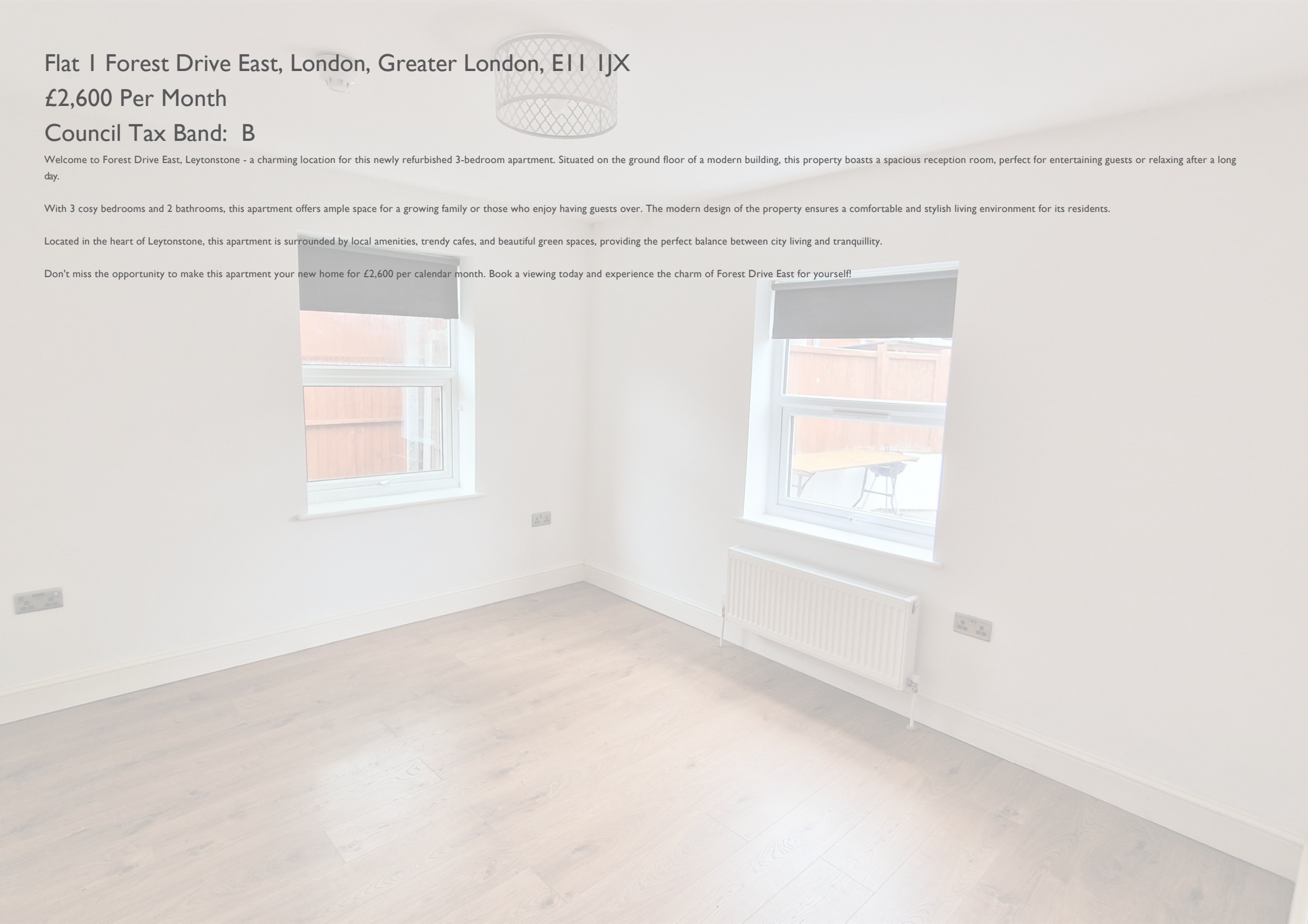
Council Tax Band: B

Welcome to Forest Drive East, Leytonstone - a charming location for this newly refurbished 3-bedroom apartment. Situated on the ground floor of a modern building, this property boasts a spacious reception room, perfect for entertaining guests or relaxing after a long day.

With 3 cosy bedrooms and 2 bathrooms, this apartment offers ample space for a growing family or those who enjoy having guests over. The modern design of the property ensures a comfortable and stylish living environment for its residents.

Located in the heart of Leytonstone, this apartment is surrounded by local amenities, trendy cafes, and beautiful green spaces, providing the perfect balance between city living and tranquillity.

Don't miss the opportunity to make this apartment your new home for £2,600 per calendar month. Book a viewing today and experience the charm of Forest Drive East for yourself!









337 Forest Road

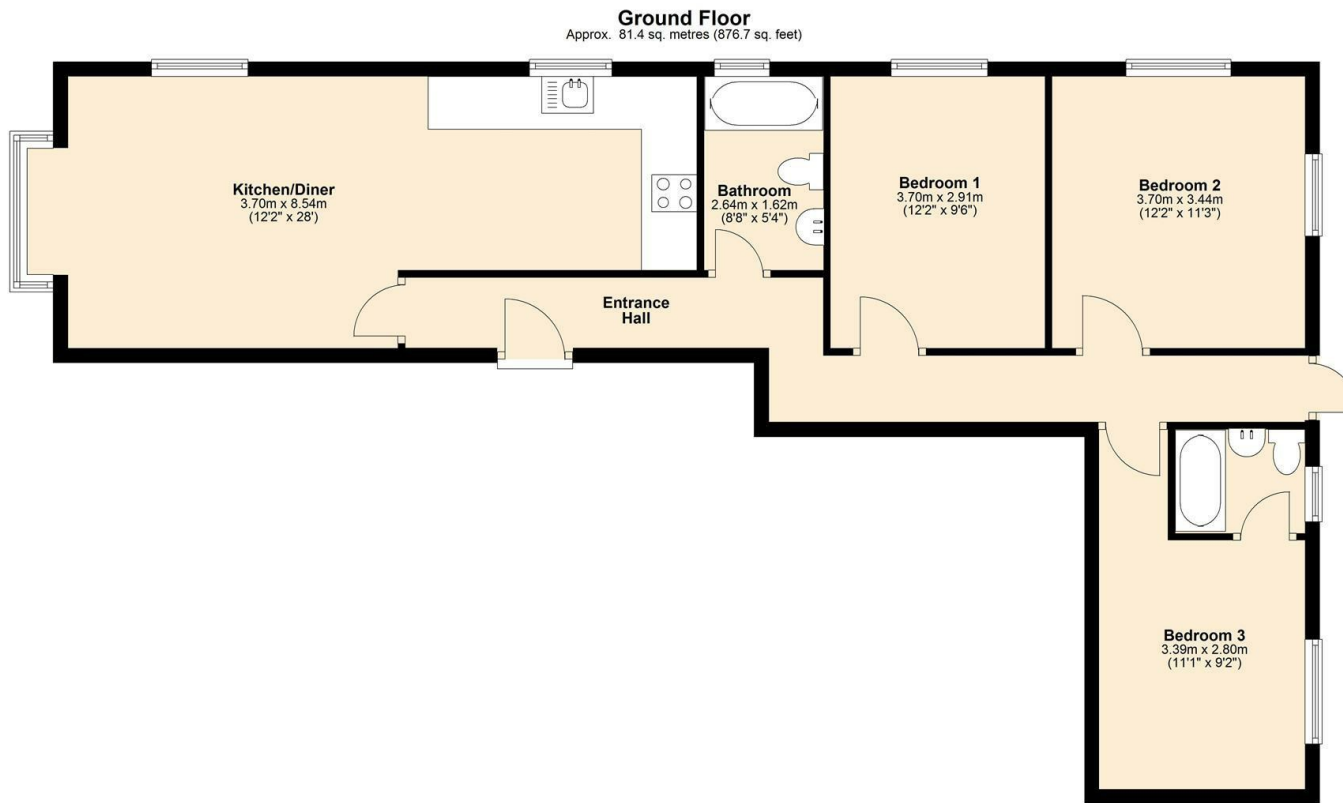
London

E17 5JR

02085277007

enquiries@completion.co.uk

completion.co.uk



Energy Efficiency Rating		
	Current	Potential
Very energy efficient - lower running costs		
(92 plus) A		
(81-91) B		
(69-80) C		
(55-68) D		
(39-54) E		
(21-38) F		
(1-20) G		
Not energy efficient - higher running costs		
England & Wales	EU Directive 2002/91/EC	