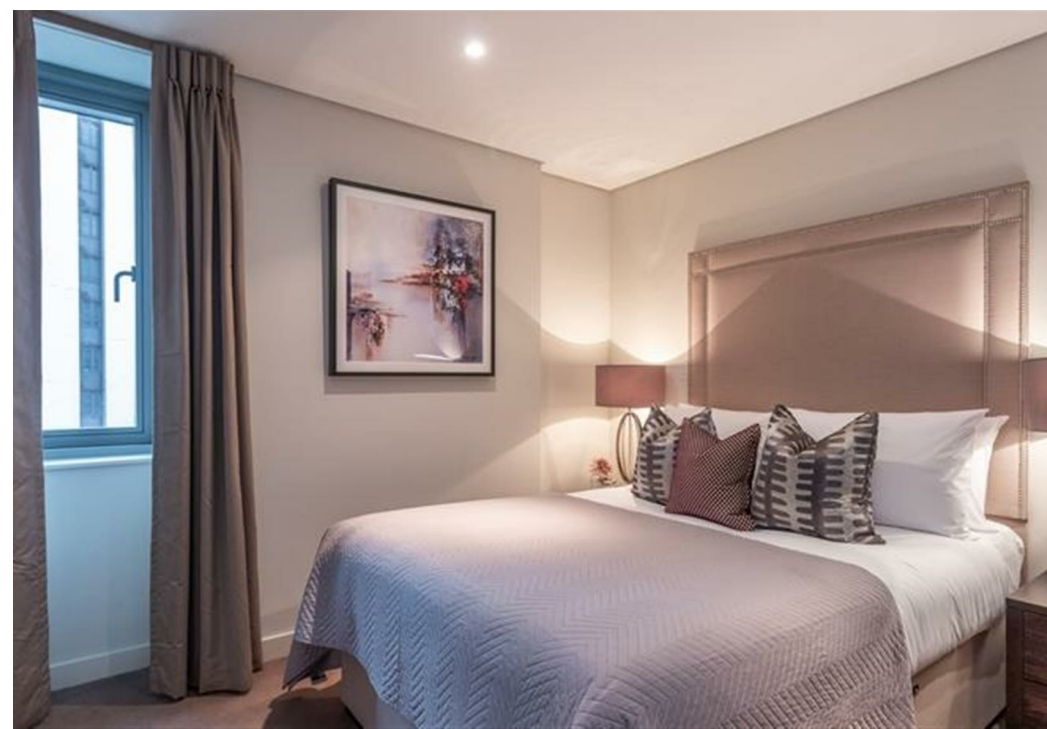
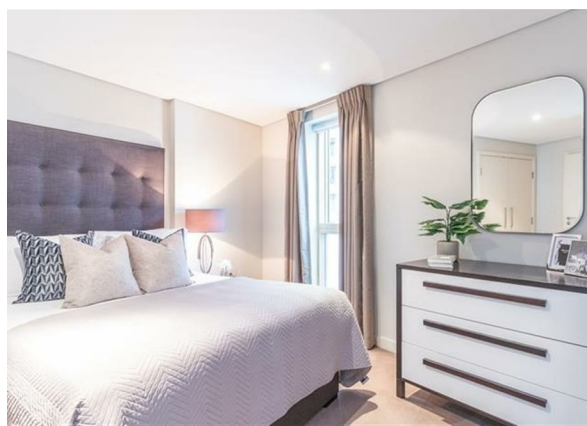
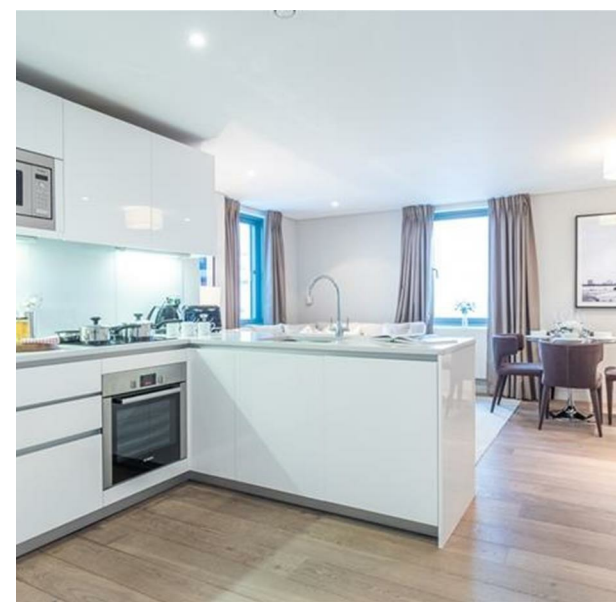


1311 Merchant Square East, London, Greater London, W2 1AN
£1,595 Per Week

COMPLETION
SALES & LETTINGS



1311 Merchant Square East, London, Greater London, W2 1AN

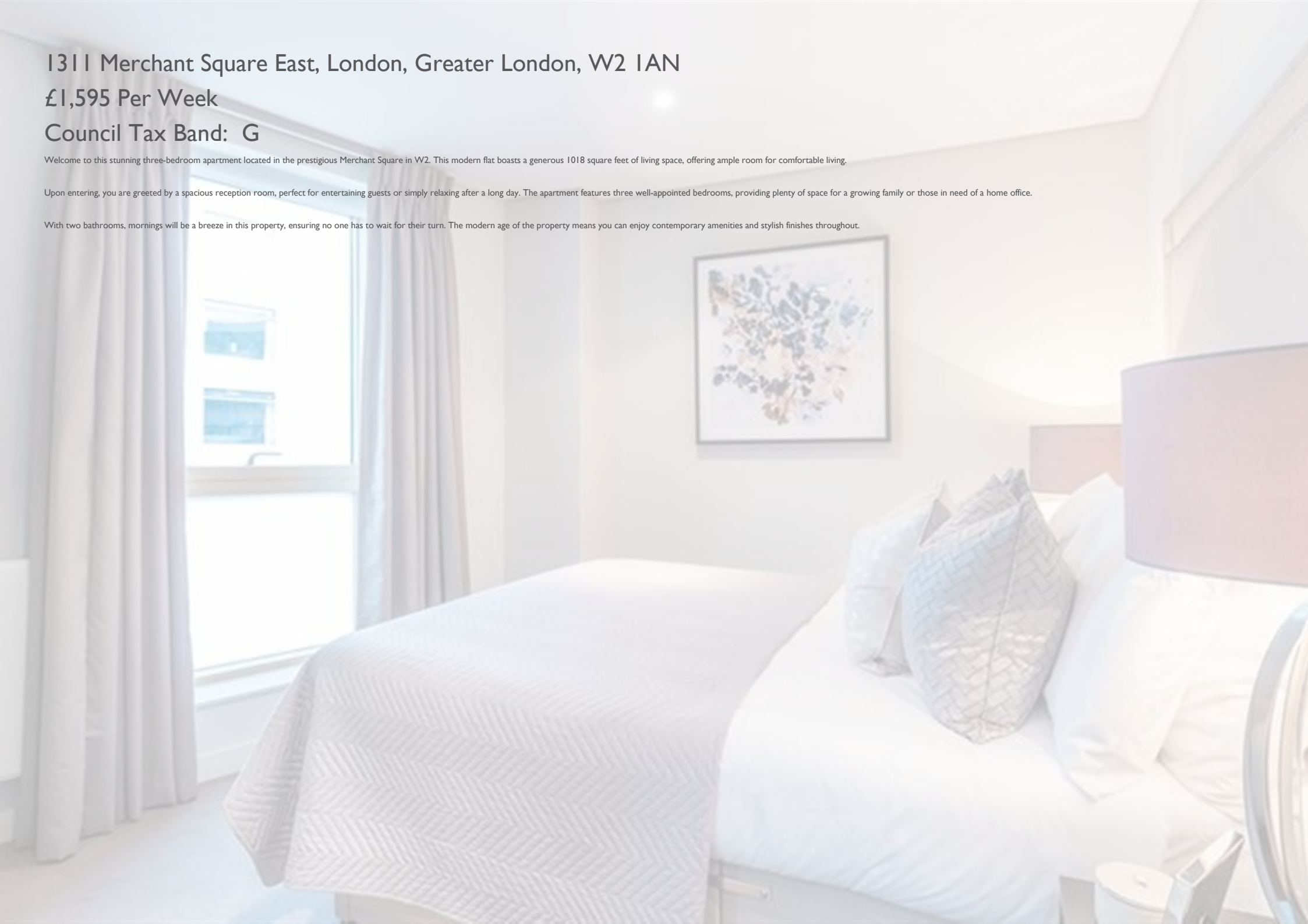
£1,595 Per Week

Council Tax Band: G

Welcome to this stunning three-bedroom apartment located in the prestigious Merchant Square in W2. This modern flat boasts a generous 1018 square feet of living space, offering ample room for comfortable living.

Upon entering, you are greeted by a spacious reception room, perfect for entertaining guests or simply relaxing after a long day. The apartment features three well-appointed bedrooms, providing plenty of space for a growing family or those in need of a home office.

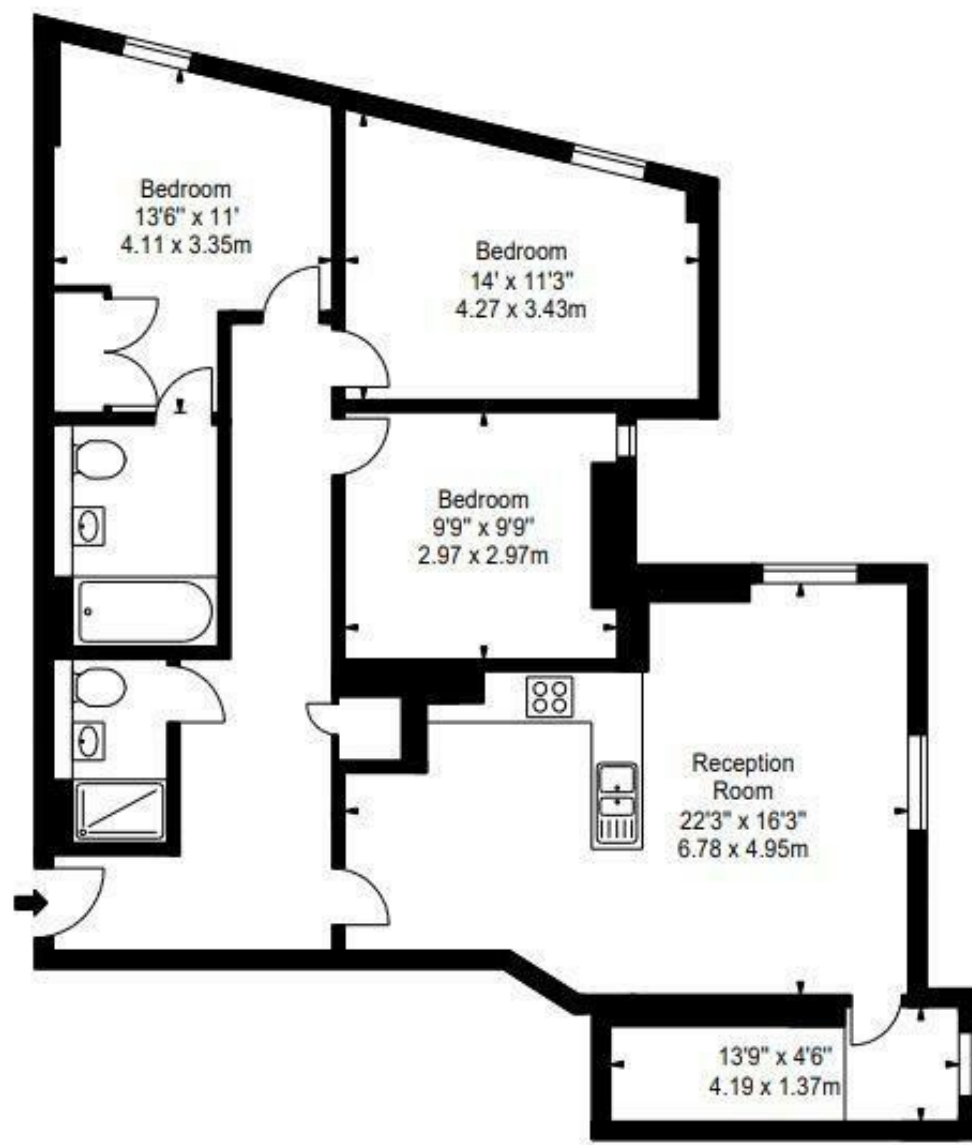
With two bathrooms, mornings will be a breeze in this property, ensuring no one has to wait for their turn. The modern age of the property means you can enjoy contemporary amenities and stylish finishes throughout.











337 Forest Road

London

E17 5JR

02085277007

enquiries@completion.co.uk

completion.co.uk

Energy Efficiency Rating		
	Current	Potential
Very energy efficient - lower running costs		
(92 plus) A		
(81-91) B	85	86
(69-80) C		
(55-68) D		
(39-54) E		
(21-38) F		
(1-20) G		
Not energy efficient - higher running costs		
England & Wales <small>EU Directive 2002/91/EC</small>		