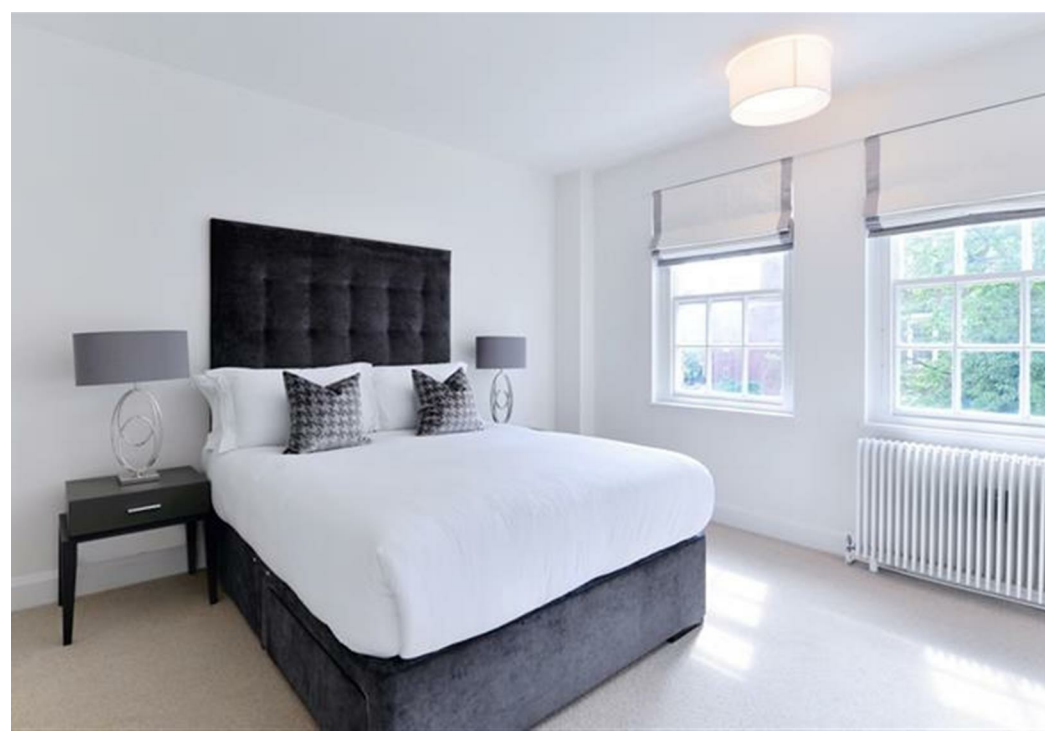
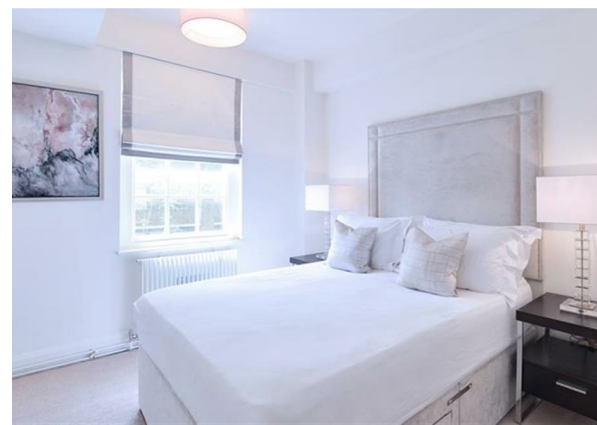
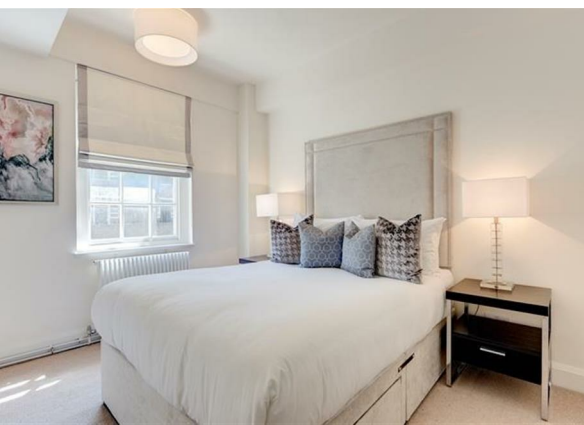
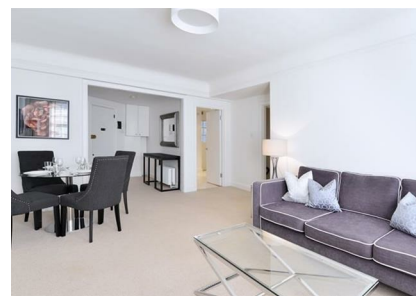


Flat 28, Pelham Court Fulham Road, London, Greater London, SW3 6SH
£1,100 Per Week

COMPLETION
SALES & LETTINGS



Flat 28, Pelham Court Fulham Road, London, Greater London, SW3 6SH

£1,100 Per Week

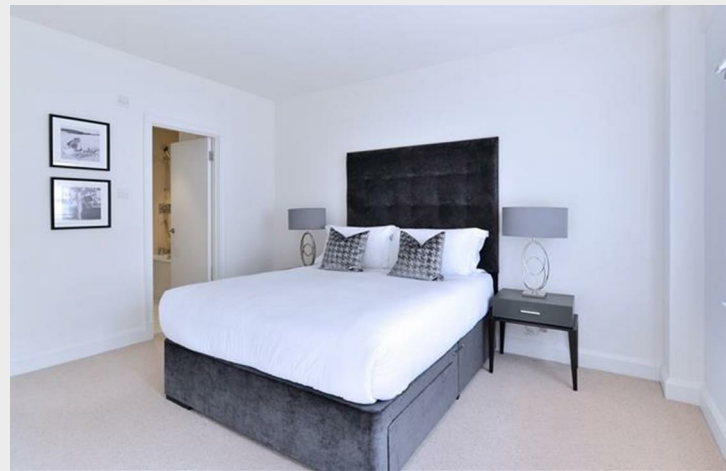
Council Tax Band: G

Pelham Court, 2 Bedroom Apartment - Short Let - SW3 - (845sq.ft) -£1100 p/w

Completion Sales and Lettings are delighted to present this two bedroom apartment to Let in SW3.











337 Forest Road

London

E17 5JR

02085277007

enquiries@completion.co.uk

completion.co.uk

Energy Efficiency Rating		
	Current	Potential
Very energy efficient - lower running costs		
(92 plus) A		
(81-91) B		
(69-80) C		
(55-68) D		
(39-54) E		
(21-38) F		
(1-20) G		
Not energy efficient - higher running costs		
England & Wales	EU Directive 2002/91/EC	