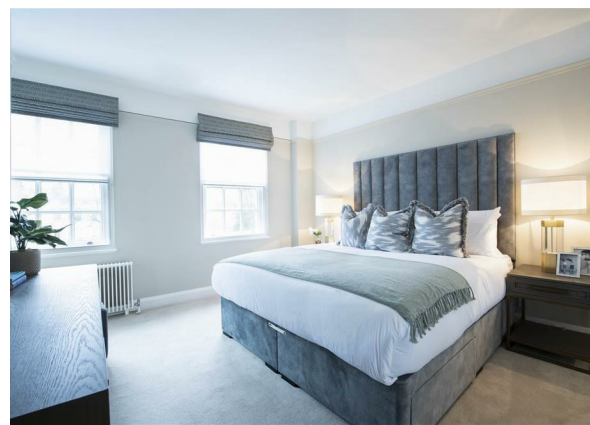
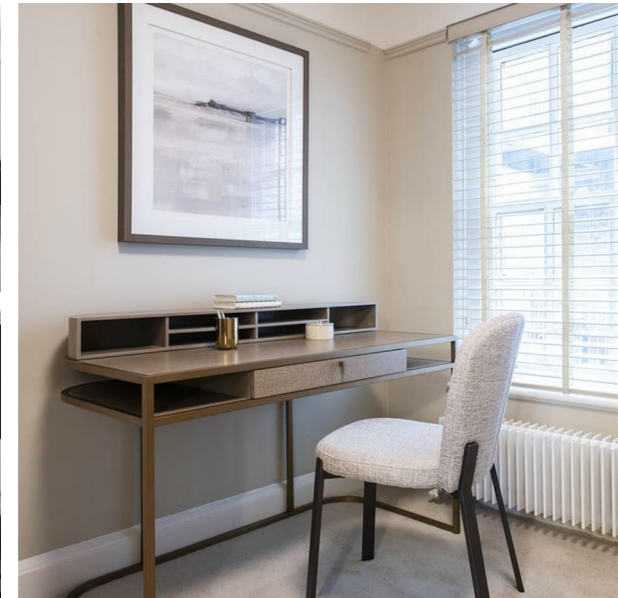


46 Pelham Court, Fulham Road, London, Greater London, SW3 6SH
£1,100 Per Week

COMPLETION
SALES & LETTINGS



46 Pelham Court, Fulham Road, London, Greater London, SW3 6SH

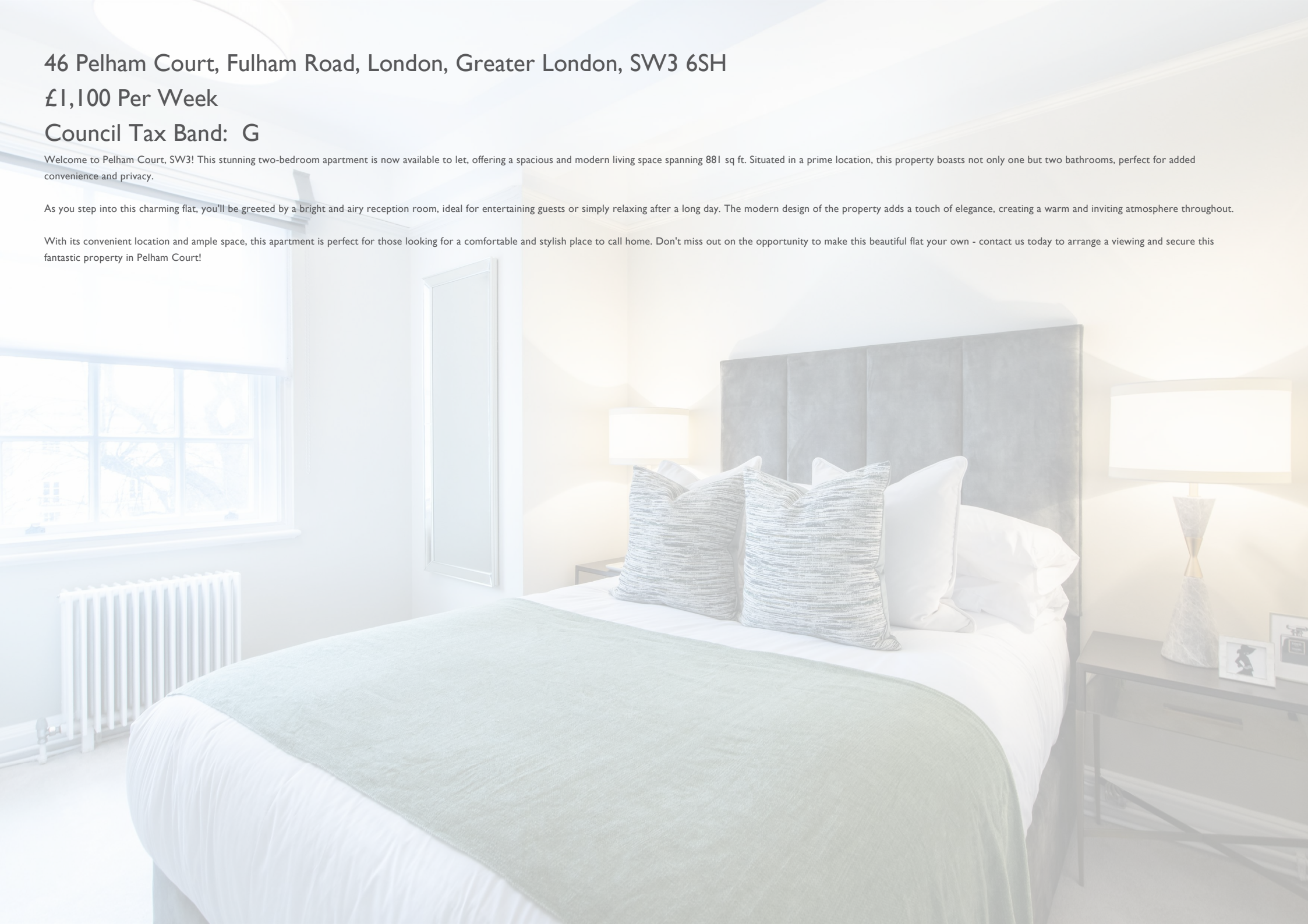
£1,100 Per Week

Council Tax Band: G

Welcome to Pelham Court, SW3! This stunning two-bedroom apartment is now available to let, offering a spacious and modern living space spanning 881 sq ft. Situated in a prime location, this property boasts not only one but two bathrooms, perfect for added convenience and privacy.

As you step into this charming flat, you'll be greeted by a bright and airy reception room, ideal for entertaining guests or simply relaxing after a long day. The modern design of the property adds a touch of elegance, creating a warm and inviting atmosphere throughout.

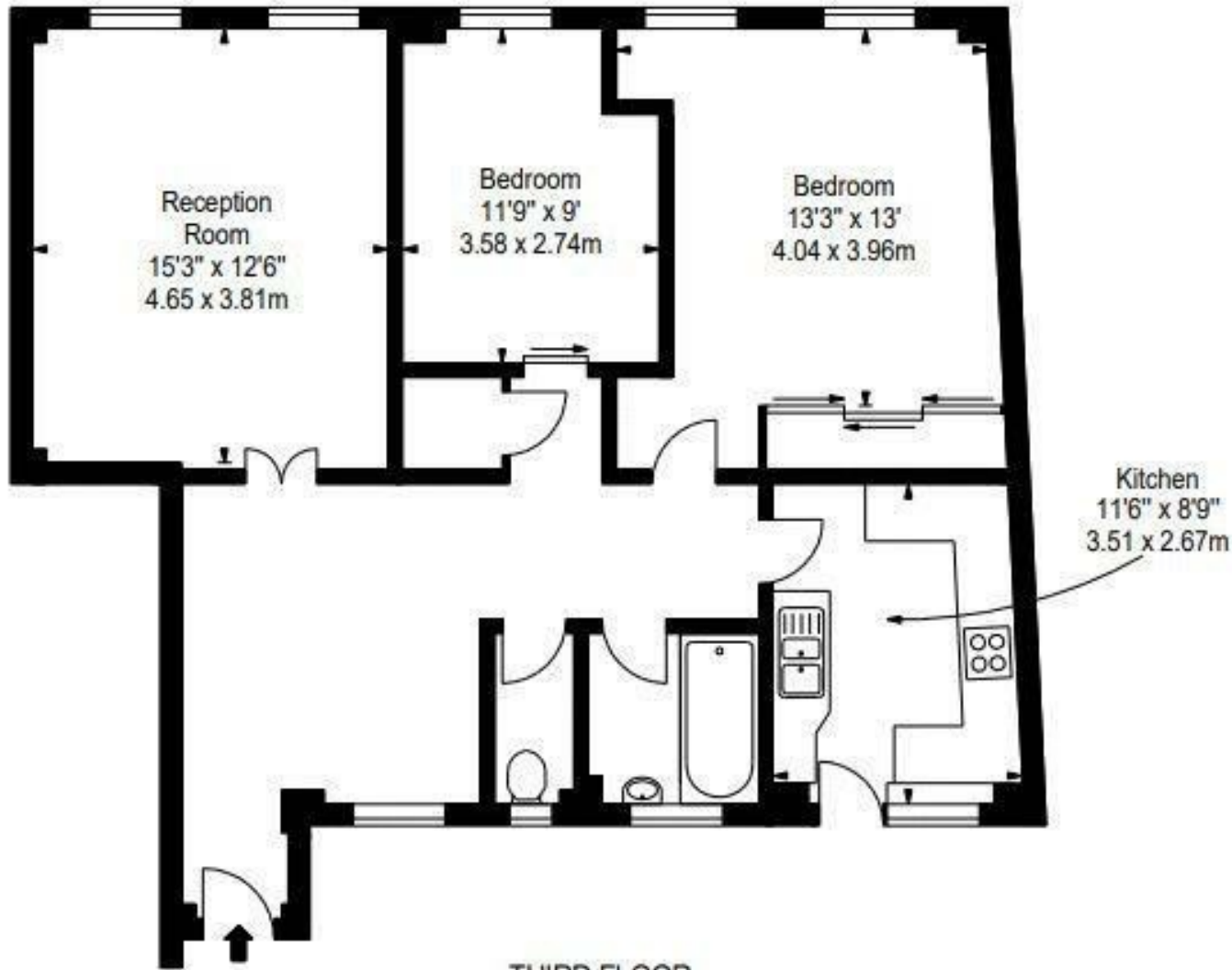
With its convenient location and ample space, this apartment is perfect for those looking for a comfortable and stylish place to call home. Don't miss out on the opportunity to make this beautiful flat your own - contact us today to arrange a viewing and secure this fantastic property in Pelham Court!











THIRD FLOOR

337 Forest Road
London
E17 5JR
02085277007

enquiries@completion.co.uk
completion.co.uk

Energy Efficiency Rating		Current	Potential
Very energy efficient - lower running costs			
(92 plus) A			
(81-91) B			80
(69-80) C			
(55-68) D		56	
(39-54) E			
(21-38) F			
(1-20) G			
Not energy efficient - higher running costs			
England & Wales		EU Directive 2002/91/EC	