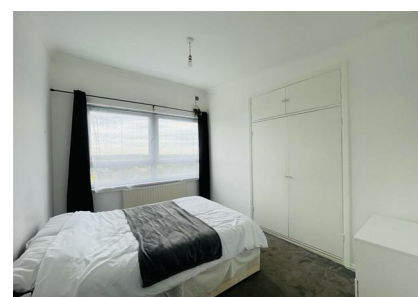
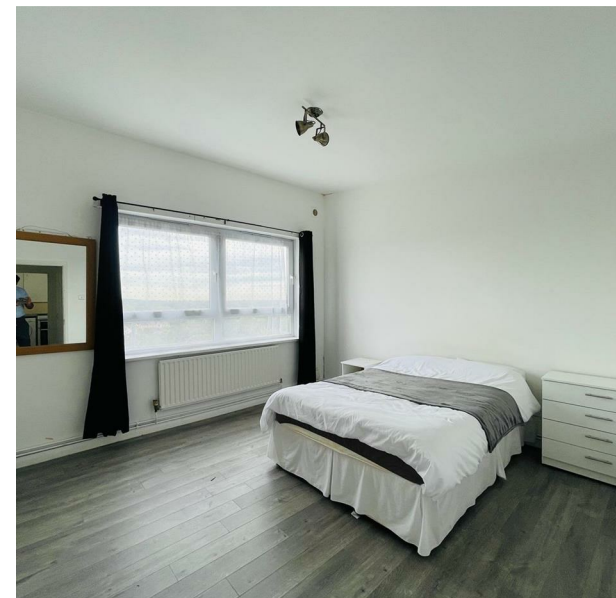


Flat 392, Haynes Park Court Slewins Close, Hornchurch, Essex, RM11 2DQ
Price Guide £225,000

COMPLETION
SALES & LETTINGS



Flat 392, Haynes Park Court Slewins Close, Hornchurch, Essex, RM11 2DQ

Price Guide £225,000

Council Tax Band: C

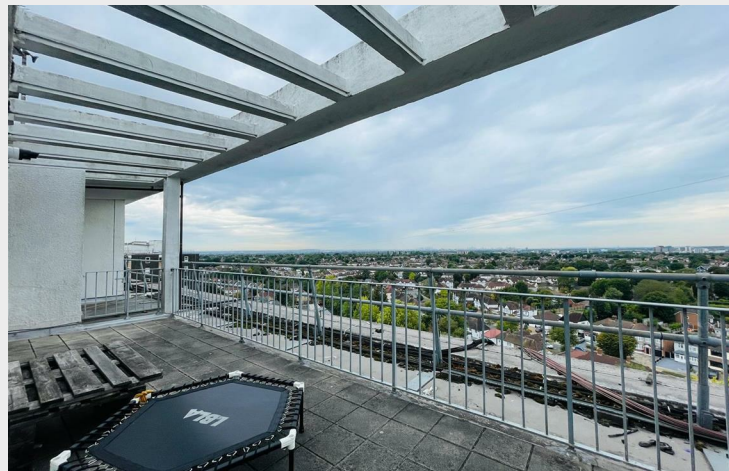
+++Looking for an exceptional property to BUY? We are pleased to offer this two bedroom penthouse apartment in a convenient and central location with stunning views over London and Essex.

The flat is in a very well maintained clean and tidy condition. The layout comprises two double bedrooms, lounge opening onto your own terrace, a further small study room, fitted kitchen and a spacious family bathroom. There is also a private roof garden and private parking.

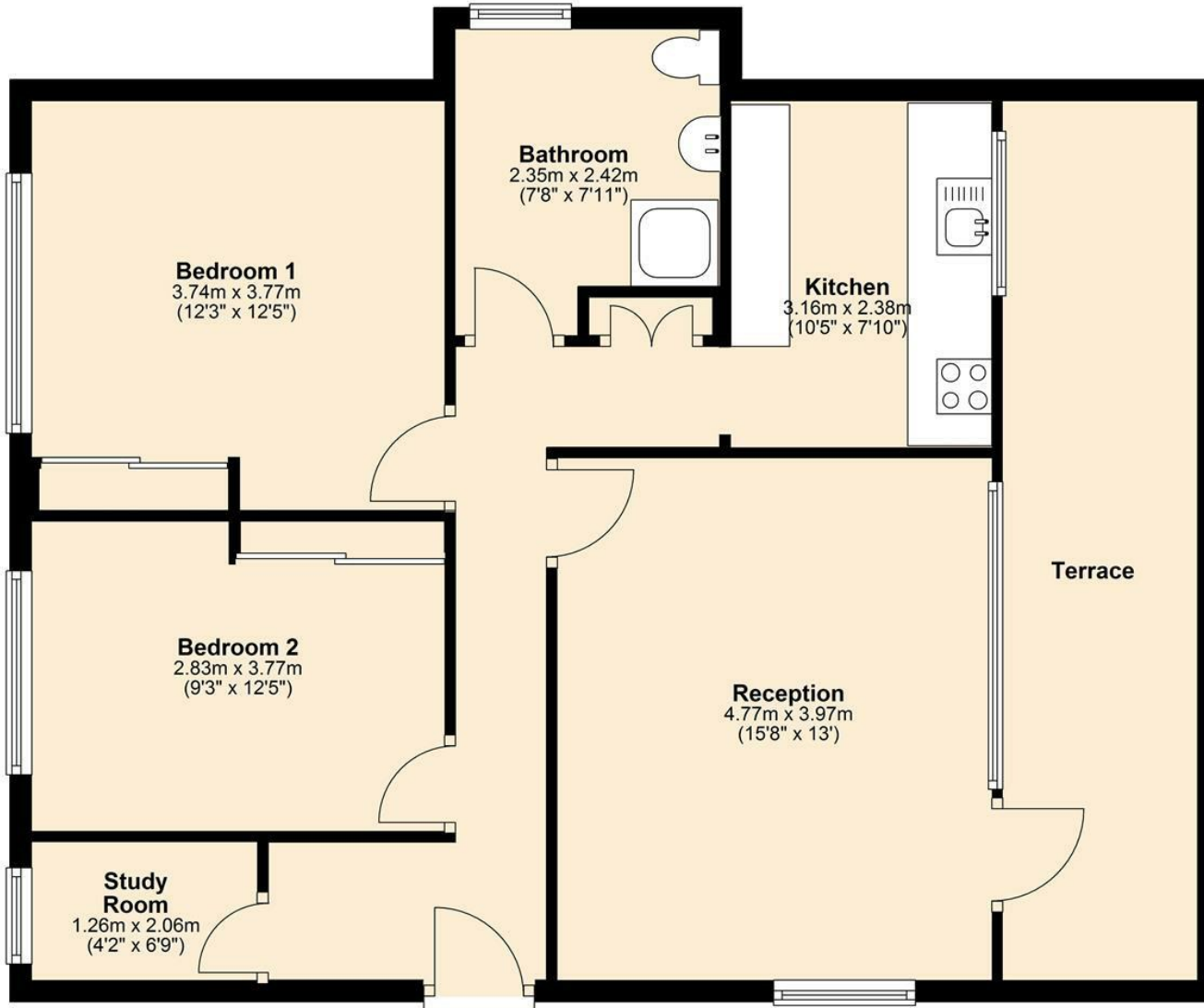
The views from this twelfth floor apartment are both stunning and far reaching, encompassing London's city skyline, parts of Kent, Essex and the adjacent Haynes park. The block is served by two hydraulic lifts and is maintained by managing agents.







Top Floor
Approx. 83.3 sq. metres (896.2 sq. feet)



337 Forest Road
London
E17 5JR
02085277007

enquiries@completion.co.uk
completion.co.uk

Energy Efficiency Rating		Current	Potential
Very energy efficient - lower running costs			
(92 plus)	A		
(81-91)	B		
(69-80)	C		
(55-68)	D		
(39-54)	E		
(21-38)	F		
(1-20)	G		
Not energy efficient - higher running costs			
England & Wales		EU Directive 2002/91/EC	