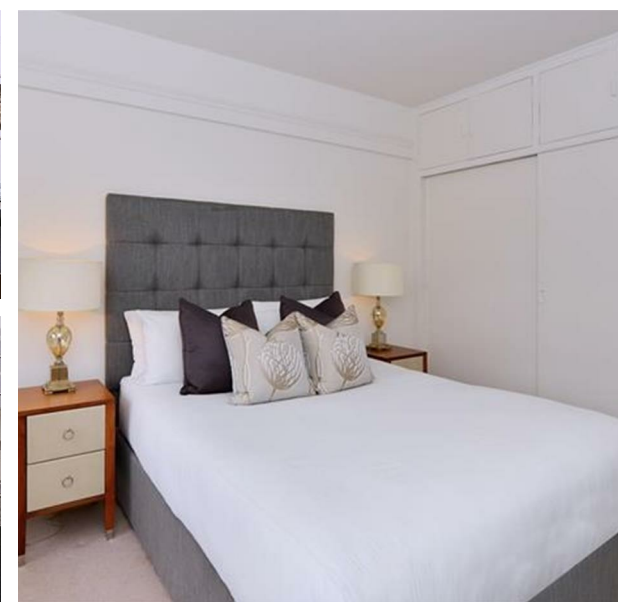


43 Pelham Court, Fulham Road, London, Greater London, SW3 6SH
£890 Per Week

COMPLETION
SALES & LETTINGS



43 Pelham Court, Fulham Road, London, Greater London, SW3 6SH

£890 Per Week

Council Tax Band: C

Welcome to Pelham Court, where luxury meets comfort in this stunning two-bedroom apartment located in the prestigious SW3 postcode area.

This modern flat boasts a spacious 709 sq ft of living space, perfect for those seeking a stylish and contemporary home. As you step inside, you are greeted by a bright and airy reception room, ideal for entertaining guests or simply relaxing after a long day.

The property features two well-appointed bedrooms, offering ample space for a growing family, guests, or a home office. The sleek bathroom adds a touch of elegance to the apartment, providing a tranquil space to unwind and rejuvenate.











337 Forest Road
London
E17 5JR
02085277007

enquiries@completion.co.uk
completion.co.uk

Energy Efficiency Rating		
	Current	Potential
Very energy efficient - lower running costs		
(92 plus) A		
(81-91) B		
(69-80) C		
(55-68) D		
(39-54) E		
(21-38) F		
(1-20) G		
Not energy efficient - higher running costs		
England & Wales		EU Directive 2002/91/EC