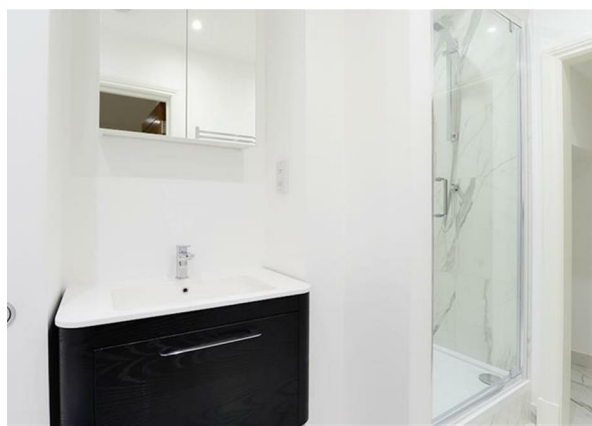
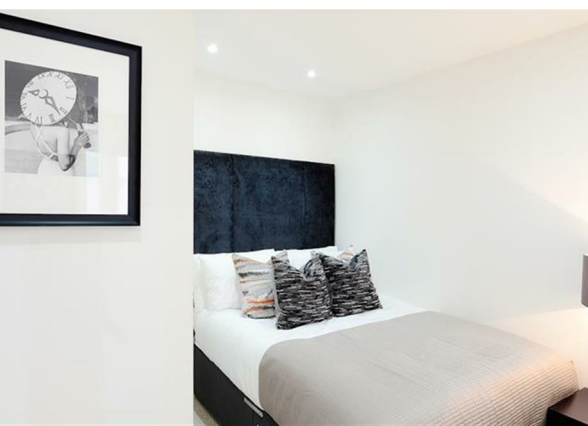
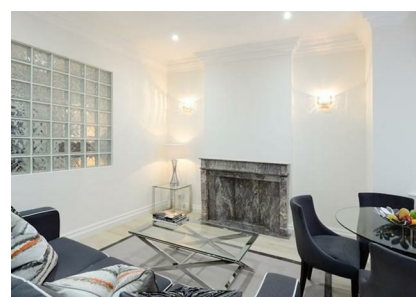
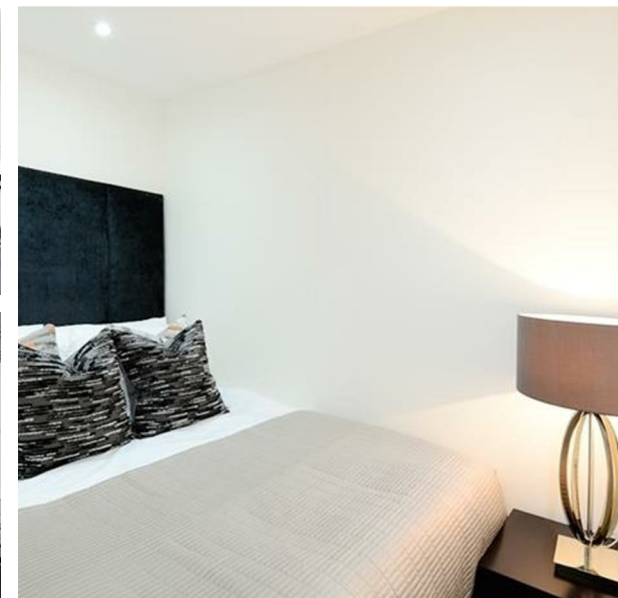


Flat 2 Somerset Court, 79-81 Lexham Gardens, London, Greater London,
W8 6JN

6625 Days Week

COMPLETION
SALES & LETTINGS



Flat 2 Somerset Court, 79-81 Lexham Gardens, London, Greater London, W8 6JN

£635 Per Week

Council Tax Band: E

Welcome to this charming one-bedroom flat located in the prestigious area of Kensington, W8. This delightful property boasts a generous 484 sq ft of living space, offering a perfect blend of comfort and style.

Situated in a modern building, this basement flat features a cosy reception room, ideal for relaxing or entertaining guests. The bedroom provides a peaceful retreat, and the bathroom ensures convenience and privacy.

The location of this property is truly unbeatable, with Kensington's renowned amenities, including high-end shops, restaurants, and cultural attractions, right at your doorstep. The vibrant atmosphere of this area is sure to captivate anyone looking for a sophisticated urban lifestyle.

Don't miss the opportunity to make this lovely flat your new home. Contact us today to arrange a viewing and experience the best of Kensington living.







337 Forest Road

London

E17 5JR

02085277007

enquiries@completion.co.uk

completion.co.uk

| Energy Efficiency Rating | | Current | Potential |
|--|--|----------------------------|-----------|
| <i>Very energy efficient - lower running costs</i> | | | |
| (92 plus) A | | | |
| (81-91) B | | | 80 |
| (69-80) C | | | |
| (55-68) D | | | |
| (39-54) E | | 40 | |
| (21-38) F | | | |
| (1-20) G | | | |
| <i>Not energy efficient - higher running costs</i> | | | |
| England & Wales | | EU Directive 2002/91/EC | |