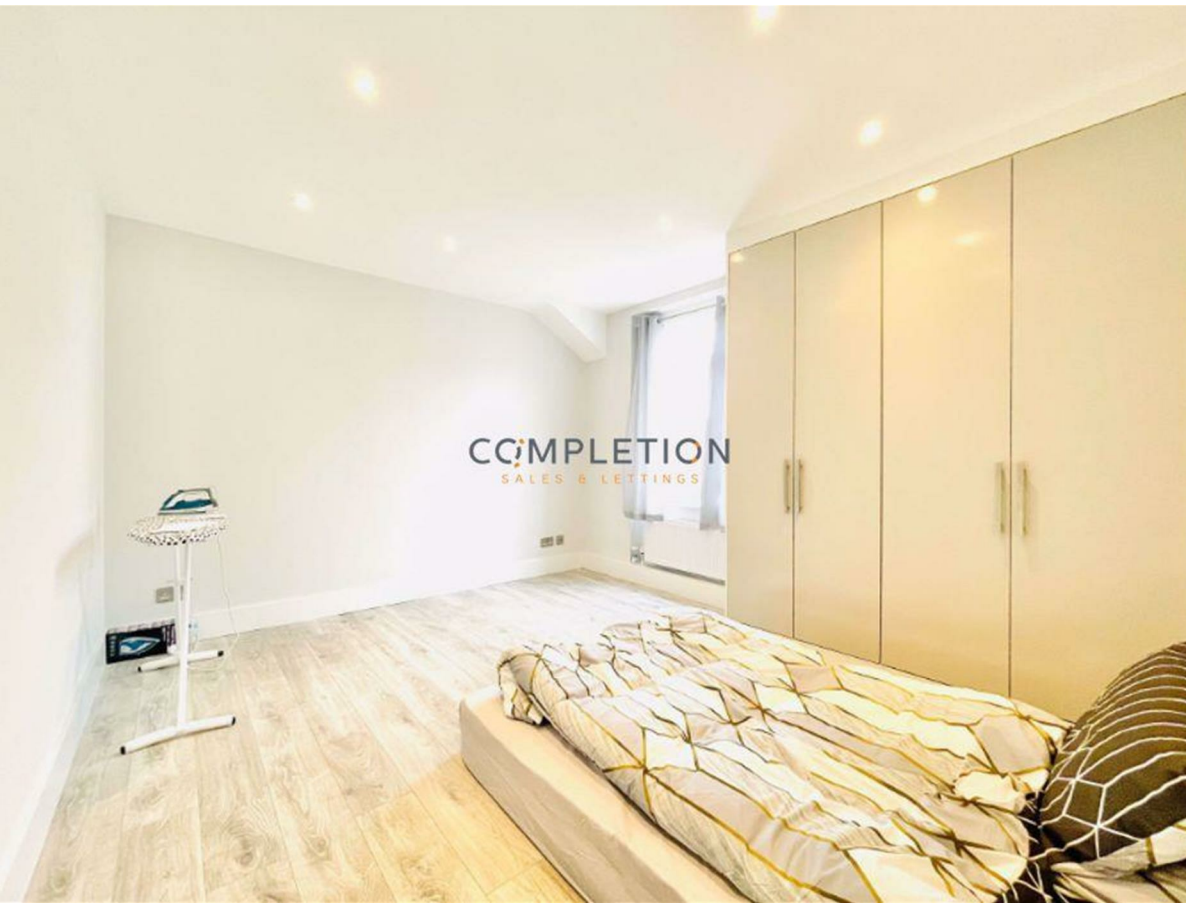


Flat 140, Marble Arch Apartment, Harrowby Street, London, Greater London,
W1H 5PQ

£2,000 Per Month

COMPLETION
SALES & LETTINGS



Flat 140, Marble Arch Apartment, Harrowby Street, London, Greater London, W1H 5PQ

£2,000 Per Month

Council Tax Band: C

Welcome to this exquisite Studio Flat located in the prestigious area of Marble Arch. This high-specification property is a prime example of luxurious city living at its finest.

Boasting a modern design, this Studio Flat offers a comfortable living space with 268 sq ft of well-utilized area. The property features one bathroom, perfect for your convenience and privacy.

Situated in the heart of Marble Arch, this property provides easy access to all the amenities and attractions this vibrant area has to offer. Whether you enjoy shopping on Oxford Street, exploring Hyde Park, or dining at top-notch restaurants, this location has it all.

Don't miss the opportunity to own or rent this modern Studio Flat in such a sought-after area. Embrace the elegance and convenience that this prime property in Marble Arch has to offer.

Fourth Floor

Approx. 24.9 sq. metres (268.1 sq. feet)



Total area: approx. 24.9 sq. metres (268.1 sq. feet)

All measurements are appropriate and should not be relied upon.
Plan produced using PlanUp.

337 Forest Road

London

E17 5JR

02085277007

enquiries@completion.co.uk

completion.co.uk

Energy Efficiency Rating		
	Current	Potential
Very energy efficient - lower running costs		
(92 plus) A		
(81-91) B		
(69-80) C		
(55-68) D	57	60
(39-54) E		
(21-38) F		
(1-20) G		
Not energy efficient - higher running costs		
England & Wales	EU Directive 2002/91/EC	