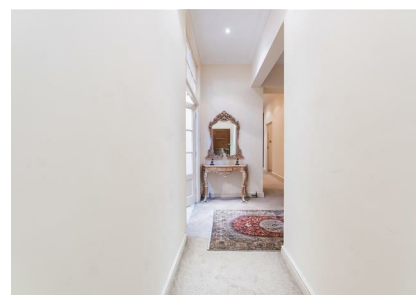


Flat 3, 207 Sussex Gardens, London, W2 2RJ  
£7,000 Per Month

COMPLETION  
SALES & LETTINGS



**Flat 3, 207 Sussex Gardens, London, W2 2RJ**

**£7,000 Per Month**

**Council Tax Band: G**

Nestled in the heart of Sussex Gardens, London, this stunning house offers a perfect blend of elegance and comfort. Boasting 2 reception rooms and 4 spacious bedrooms, this property is ideal for those seeking a luxurious living space. With 4 modern bathrooms, including 1 en-suite, convenience is at the forefront of this home.

Spanning across 1500 sq ft, this house is a true gem in the city. Situated on the 2nd floor of a well-managed period building, the property exudes charm and sophistication. Its proximity to Paddington, Lancaster Gate, and Edgware Road stations makes commuting a breeze, perfect for those with a busy lifestyle.

Step inside to discover 3 huge bedrooms, an additional double bedroom, a large reception room, and a fully fitted modern kitchen. The property also features a separate WC, adding to the convenience and comfort it offers. If you are looking for a spacious and well-appointed home in a prime location in London, this



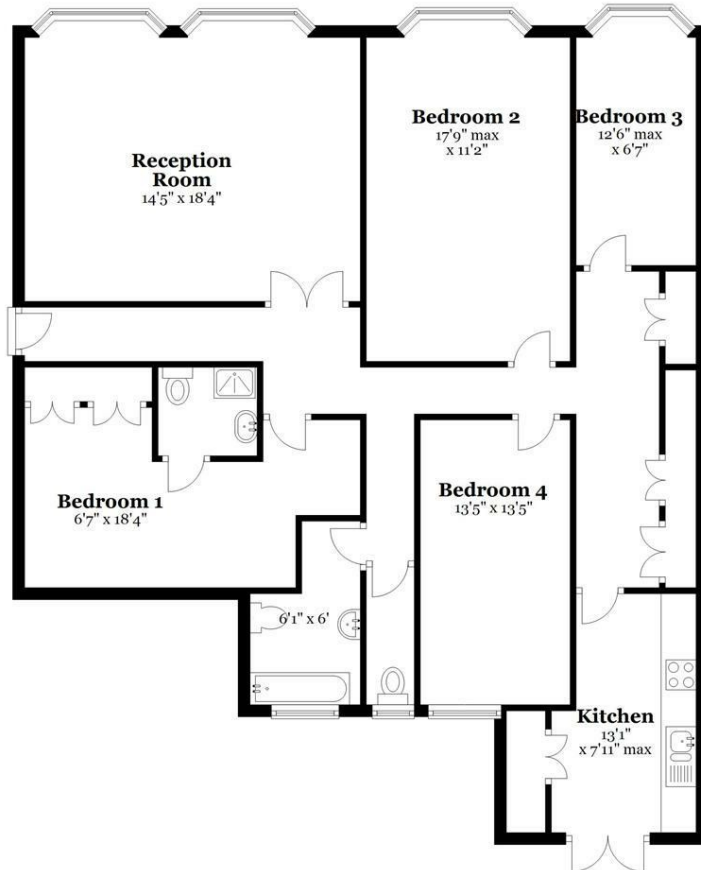






**Ground Floor**

Approx. 1396.7 sq. feet



Total area: approx. 1396.7 sq. feet

All measurements are appropriate and should not be relied upon.  
Plan produced using PlanUp.

337 Forest Road

London

E17 5JR

02085277007

enquiries@completion.co.uk

completion.co.uk

Energy Efficiency Rating		
	Current	Potential
Very energy efficient - lower running costs		
(92 plus) <b>A</b>		
(81-91) <b>B</b>		
(69-80) <b>C</b>		
(55-68) <b>D</b>	59	61
(39-54) <b>E</b>		
(21-38) <b>F</b>		
(1-20) <b>G</b>		
Not energy efficient - higher running costs		
England & Wales	EU Directive 2002/91/EC	