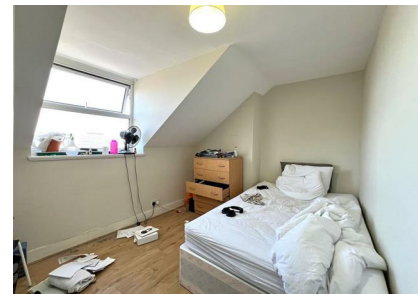


Flat 158a Hoe Street, London, Greater London, E17 4QH
£1,800 Per Month

COMPLETION
SALES & LETTINGS



Flat 158a Hoe Street, London, Greater London, E17 4QH

£1,800 Per Month

Council Tax Band: B

Welcome to this charming 2-bedroom duplex flat located on Hoe Street in the vibrant area of Walthamstow, E17. This modern property boasts a spacious reception room, perfect for entertaining guests or simply relaxing after a long day. With two cosy bedrooms, there's plenty of space for a small family, a couple, or even for those who desire a home office. The flat also features a well-appointed bathroom, ensuring convenience and comfort for its residents.

Situated in a modern building, this property offers a contemporary living experience in a bustling neighbourhood. The location provides easy access to local amenities, including shops, restaurants, and cafes, making it a convenient place to call home. Whether you're looking to rent your first flat or seeking a new space to create lasting memories, this duplex flat on Hoe Street is sure to impress.

Don't miss out on the opportunity to make this lovely flat your new home. Contact us today to schedule a viewing and experience the charm and comfort this property has to offer.





337 Forest Road
 London
 E17 5JR
 02085277007
 enquiries@completion.co.uk
 completion.co.uk

