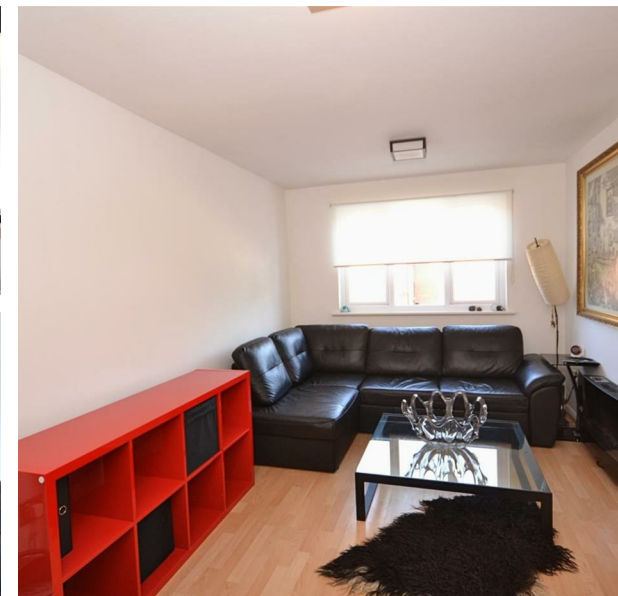


7 Green Pond Close, Walthamstow, Greater London, E17 6EE  
£1,400 Per Month

COMPLETION  
SALES & LETTINGS



## 7 Green Pond Close, Walthamstow, Greater London, E17 6EE

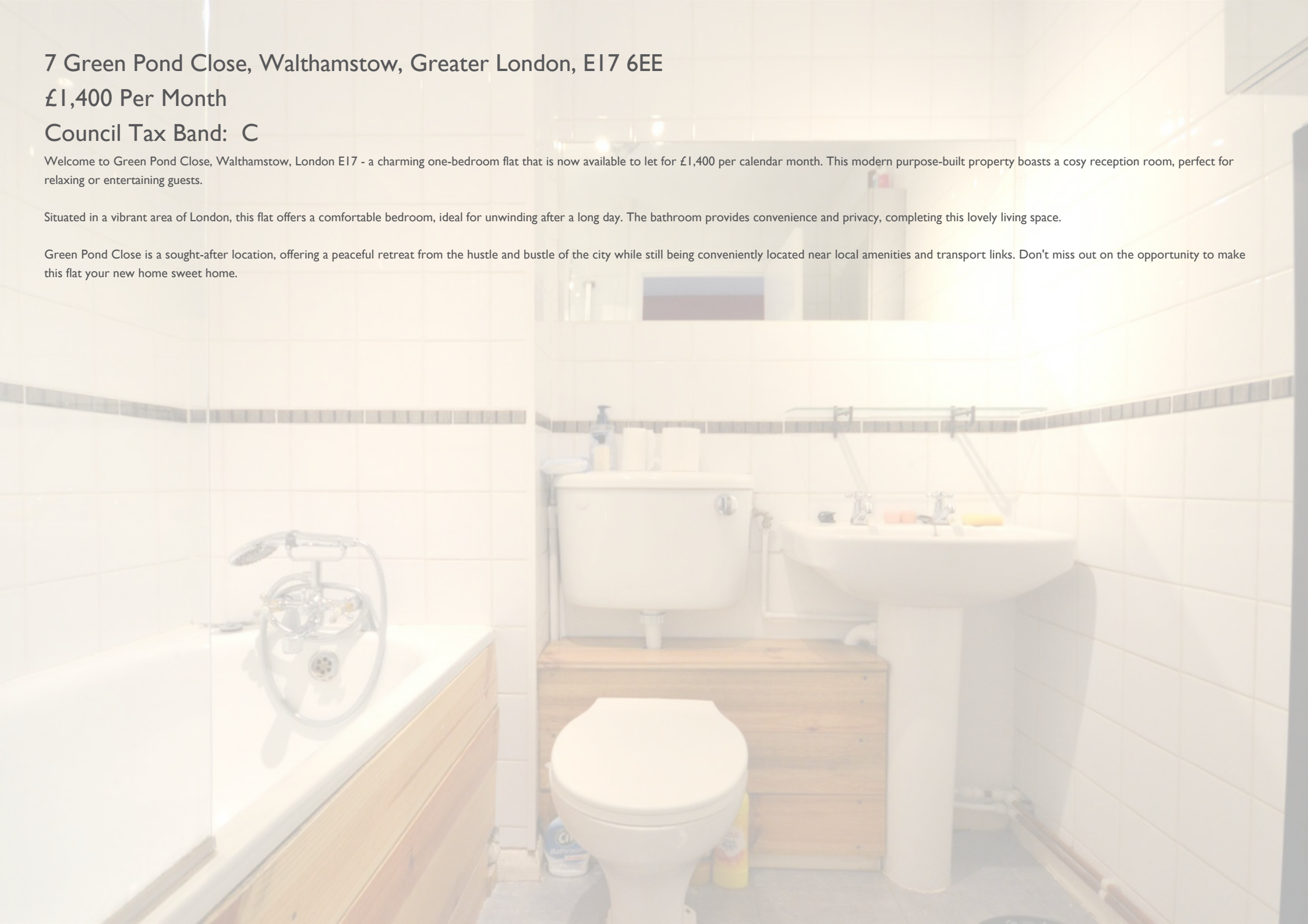
£1,400 Per Month

Council Tax Band: C

Welcome to Green Pond Close, Walthamstow, London E17 - a charming one-bedroom flat that is now available to let for £1,400 per calendar month. This modern purpose-built property boasts a cosy reception room, perfect for relaxing or entertaining guests.

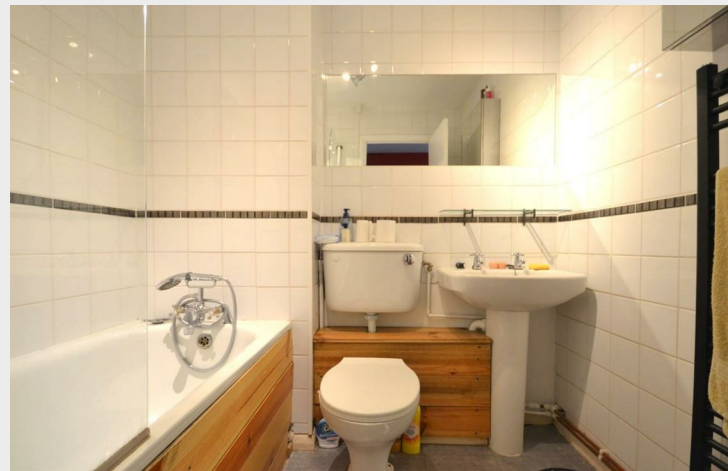
Situated in a vibrant area of London, this flat offers a comfortable bedroom, ideal for unwinding after a long day. The bathroom provides convenience and privacy, completing this lovely living space.

Green Pond Close is a sought-after location, offering a peaceful retreat from the hustle and bustle of the city while still being conveniently located near local amenities and transport links. Don't miss out on the opportunity to make this flat your new home sweet home.







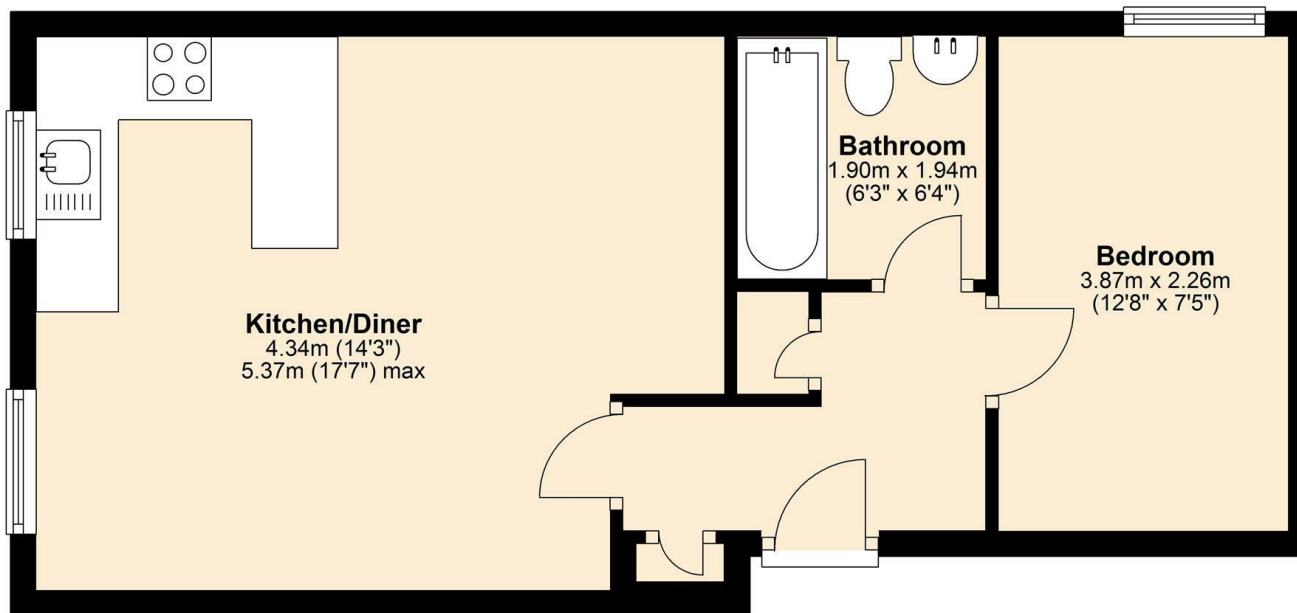




337 Forest Road  
London  
E17 5JR  
02085277007

enquiries@completion.co.uk  
completion.co.uk

**First Floor**  
Approx. 39.0 sq. metres (420.3 sq. feet)



Energy Efficiency Rating		
	Current	Potential
Very energy efficient - lower running costs		
(92 plus) <b>A</b>		
(81-91) <b>B</b>		
(69-80) <b>C</b>		
(55-68) <b>D</b>		
(39-54) <b>E</b>		
(21-38) <b>F</b>		
(1-20) <b>G</b>		
Not energy efficient - higher running costs		
England & Wales	EU Directive 2002/91/EC	