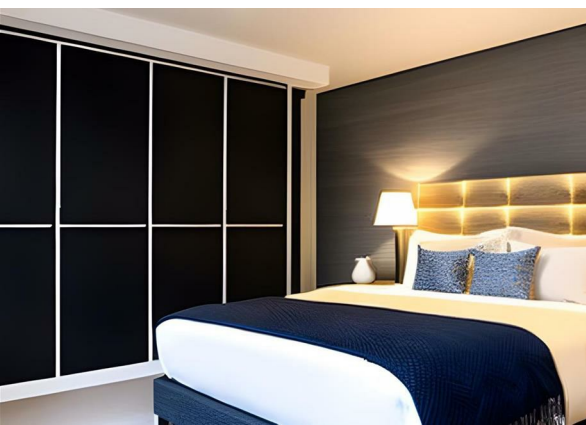
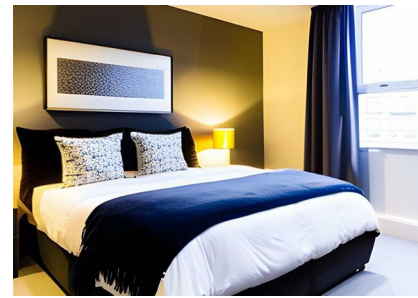


Flat 2, 200 Ruckholt Road, London, Greater London, E10 5FA  
Guide Price £500,000  
Council Tax Band:

**COMPLETION**  
SALES & LETTINGS



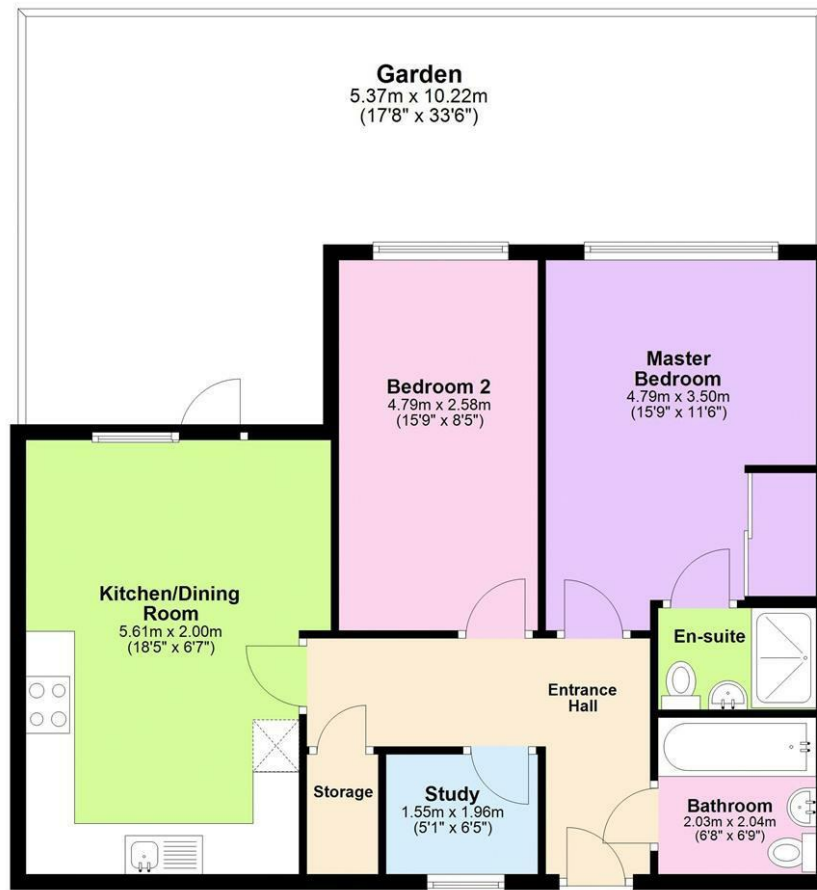
NEW BUILD | LONG LEASE | 1 – 3 Bedrooms | COMMUNAL GARDEN | CYCLE STORAGE | PRIVATE BALCONIES | CLOSE TO LEYTON STATION | CLOSE TO STRATFORD WESTFIELD SHOPPING CENTRE | CLOSE TO OLYMPIC PARK STRATFORD | SERVICE CHARGE UPON APPLICATION | 999 YEARS LEASE

Welcome to this stylish and contemporary purpose-built apartment, situated in the upcoming and sought after part of Leyton E10. This modern residence offers a perfect combination of comfort, convenience, and sleek design.

337 Forest Road, London, E17 5JR  
02085277007  
enquiries@completion.co.uk  
completion.co.uk

**Ground Floor**

Approx. 71.7 sq. metres (771.9 sq. feet)



Total area: approx. 71.7 sq. metres (771.9 sq. feet)

Energy Efficiency Rating		Current	Potential
<i>Very energy efficient - lower running costs</i>			
(92 plus)	<b>A</b>		
(81-91)	<b>B</b>		
(69-80)	<b>C</b>		
(55-68)	<b>D</b>		
(39-54)	<b>E</b>		
(21-38)	<b>F</b>		
(1-20)	<b>G</b>		
<i>Not energy efficient - higher running costs</i>			
<b>England &amp; Wales</b>		EU Directive 2002/91/EC	