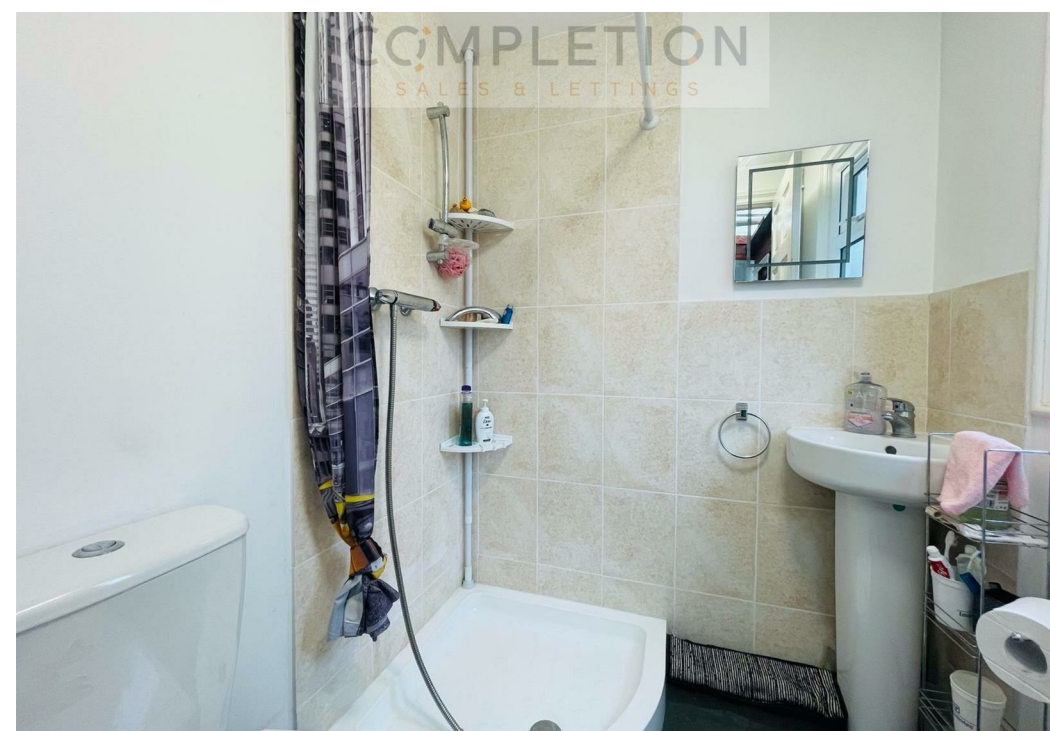
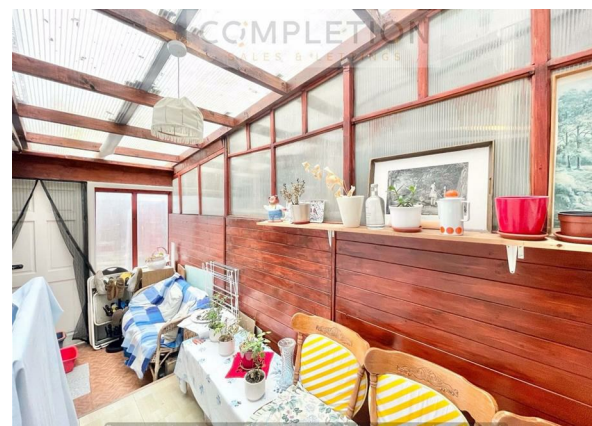


18 Colville Road, London, Greater London, E17 6EL
Guide Price £500,000

COMPLETION
SALES & LETTINGS



18 Colville Road, London, Greater London, E17 6EL

Guide Price £500,000

Council Tax Band: C

VICTORIAN | CHAIN FREE | EXCELLENT LOCATION | POTENTIAL FOR EXTENSION | IDEAL FOR REFURBISHMENT

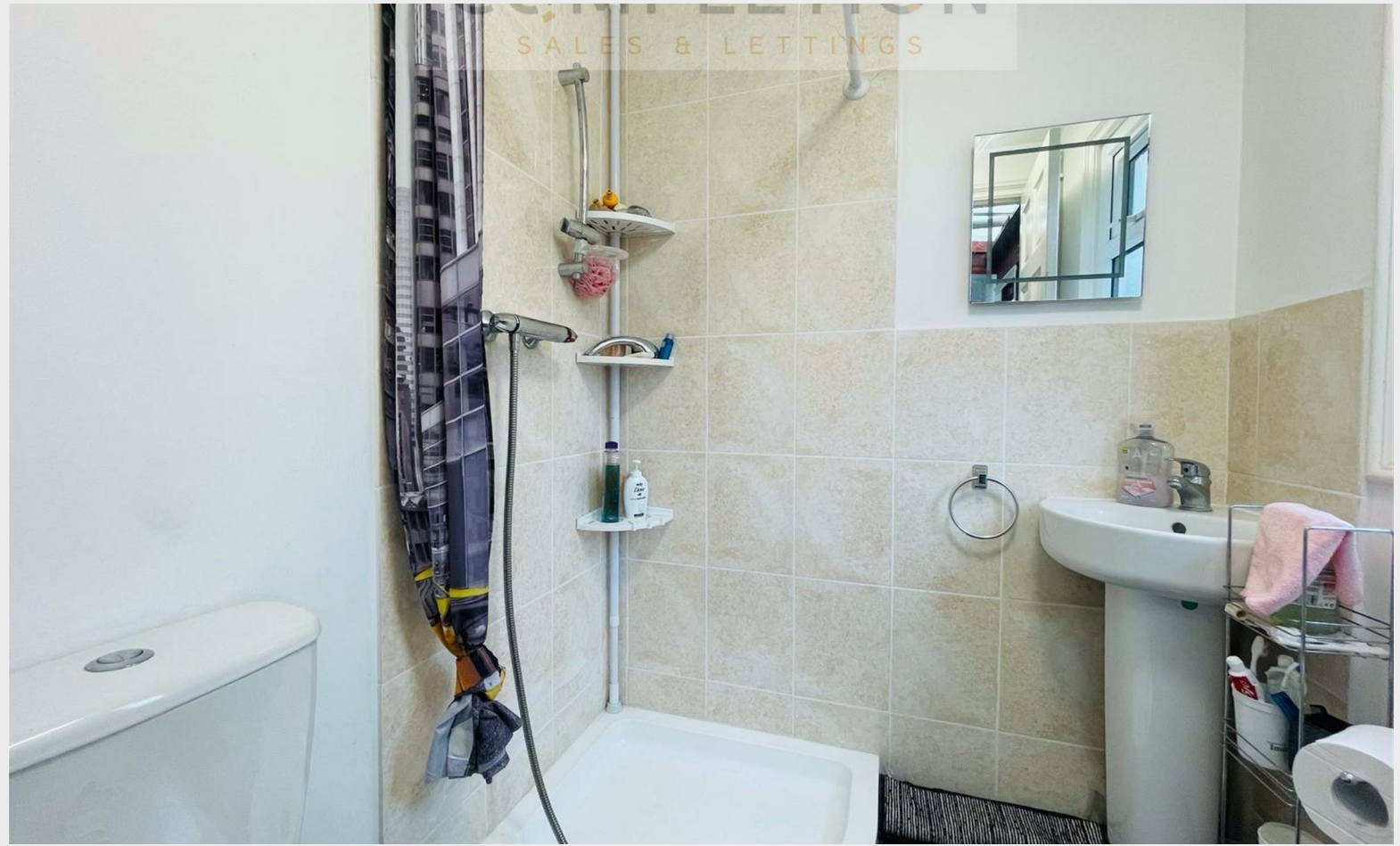
Looking for a Victorian House not too far from Station? We are delighted to offer for sale this charming two-bedroom house with a garden located on a nice residential street. The layout comprises of two reception rooms, separate kitchen, utility area and a ground floor bathroom. First floor comprises of master bedroom, a further good size double bedroom with an en-suite large family bathroom.



COMPLETION

SALES & LETTINGS

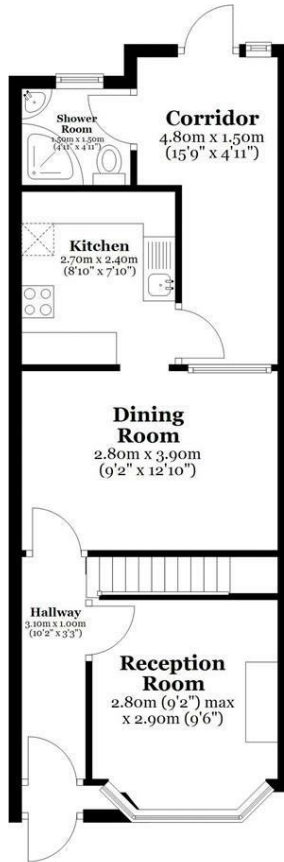






Ground Floor

Approx. 44.3 sq. metres (476.5 sq. feet)



First Floor

Approx. 31.4 sq. metres (338.0 sq. feet)



Total area: approx. 75.7 sq. metres (814.5 sq. feet)

All measurements are appropriate and should not be relied upon.
Plan produced using PlanUp.

337 Forest Road

London

E17 5JR

02085277007

enquiries@completion.co.uk

completion.co.uk

Energy Efficiency Rating		
	Current	Potential
Very energy efficient - lower running costs		
(92 plus) A		
(81-91) B		81
(69-80) C		
(55-68) D	61	
(39-54) E		
(21-38) F		
(1-20) G		
Not energy efficient - higher running costs		
England & Wales	EU Directive 2002/91/EC	