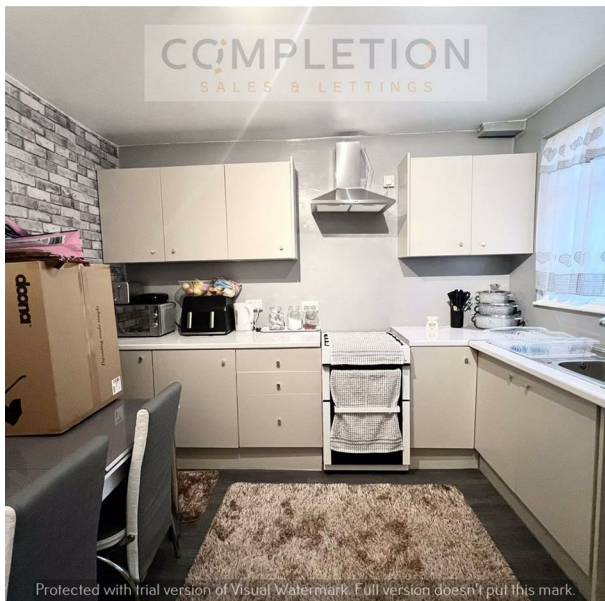


32 Roberts Road, Walthamstow, London, Greater London, E17 4LR
Guide Price £475,000

COMPLETION
SALES & LETTINGS



32 Roberts Road, Walthamstow, London, Greater London, E17 4LR

Guide Price £475,000

Council Tax Band: C

CHAIN FREE | VICTORIAN PROPERTY | THREE BEDROOMS | LARGE RECEPTION ROOM | PRIVATE GARDEN | POTENTIAL LOFT & REAR CONVERSION | Guide Price £475,000 - £500,000

Looking for a Victorian house with potential for expansion? We are delighted to offer this Victorian family home situated on Roberts Road E17. The layout comprises of a large reception room with Bay Window, a nice size kitchen dinner, a downstairs bathroom with utility area and a private garden mainly laid to lawn. On



COMPLETION

SALES & LETTINGS



COMPLETION
SALES & LETTINGS

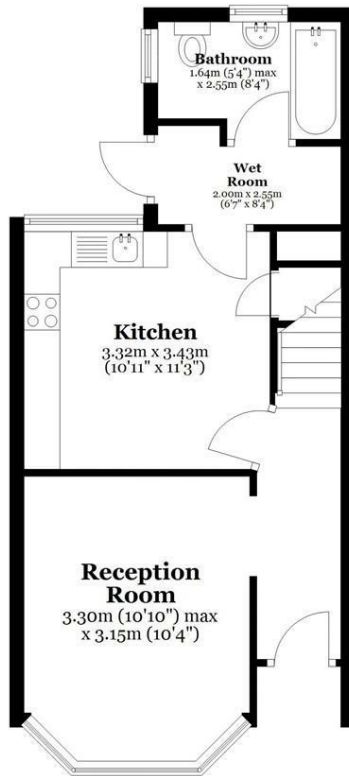


of Visual Watermark. Full vers

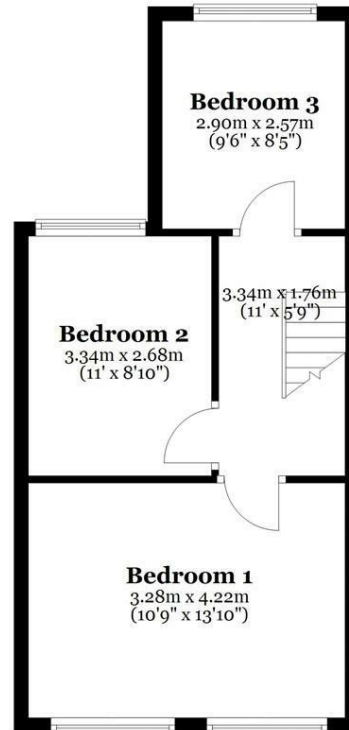


version of Visual Watermark Full version de

Ground Floor
Approx. 37.7 sq. metres (405.7 sq. feet)



First Floor
Approx. 37.2 sq. metres (400.1 sq. feet)



Total area: approx. 74.9 sq. metres (805.8 sq. feet)

All measurements are appropriate and should not be relied upon.
Plan produced using PlanUp.

337 Forest Road
London
E17 5JR
02085277007

enquiries@completion.co.uk
completion.co.uk

Energy Efficiency Rating		
	Current	Potential
Very energy efficient - lower running costs		
(92 plus) A		
(81-91) B		
(69-80) C		
(55-68) D		
(39-54) E		
(21-38) F		
(1-20) G		
Not energy efficient - higher running costs		
England & Wales	EU Directive 2002/91/EC	