

19 Oxford Close, London, Greater London, N9 0NB
Guide Price £500,000
Council Tax Band: D

COMPLETION
SALES & LETTINGS

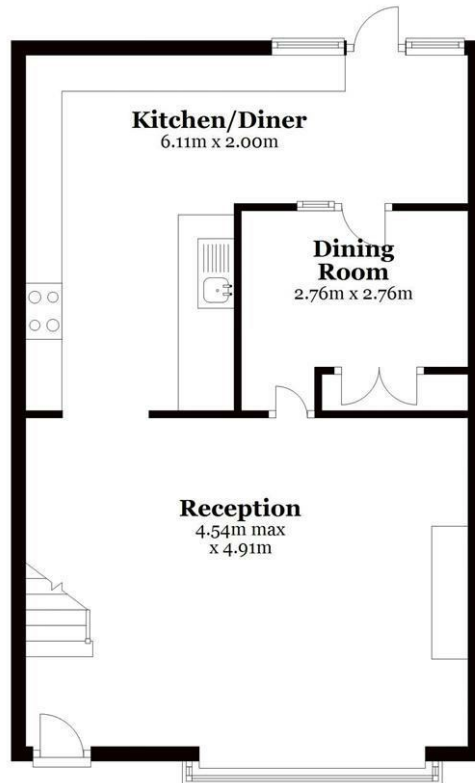


+++ OXFORD CLOSE+++ EDMONTON GREEN+++ THREE BEDROOM SEMI-DETACHED HOUSE+++

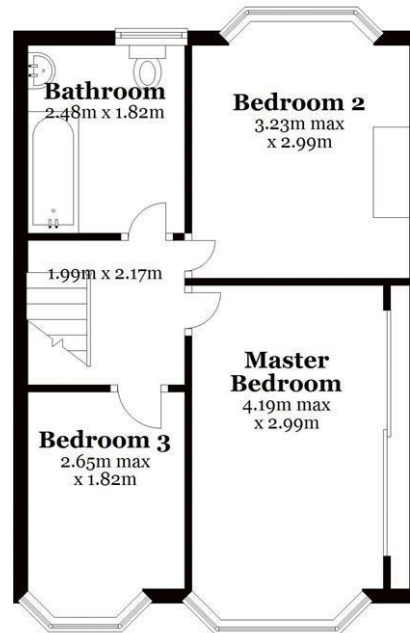
This superb family home is located on this quiet residential Close, situated in close proximity to Edmonton Green, which offers an array of facilities, such as shopping and leisure.

337 Forest Road, London, E17 5JR
02085277007
enquiries@completion.co.uk
completion.co.uk

Ground Floor
Approx. 55.9 sq. metres



First Floor
Approx. 39.6 sq. metres



Total area: approx. 95.5 sq. metres
All measurements are appropriate and should not be relied upon.
Plan produced using PlanUp.

Energy Efficiency Rating		Current	Potential
<i>Very energy efficient - lower running costs</i>			
(92 plus) A			
(81-91) B			
(69-80) C			
(55-68) D			
(39-54) E			
(21-38) F			
(1-20) G			
<i>Not energy efficient - higher running costs</i>			
England & Wales	EU Directive 2002/91/EC		