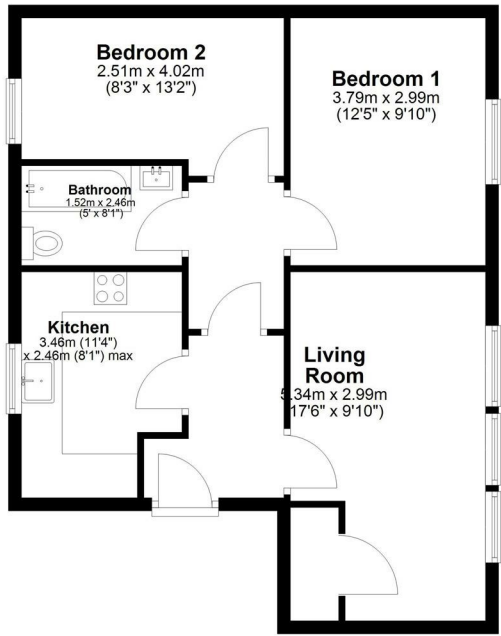


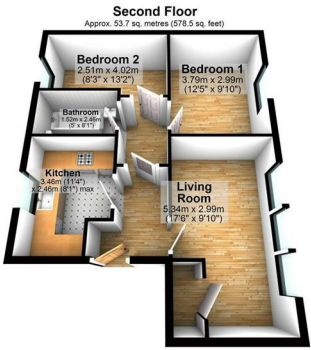
Flat 3, 408 Lea Bridge Road, London, Greater London, E10 7DY
 Guide Price £375,000



Second Floor
 Approx. 53.7 sq. metres (578.5 sq. feet)



Total area: approx. 53.7 sq. metres (578.5 sq. feet)



Total area: approx. 53.7 sq. metres (578.5 sq. feet)

55-68

D

Flat 3, 408 Lea Bridge Road, London, Greater London, E10 7DY

Guide Price £375,000

39-54

E

Council Tax Band:

21-38

F

Looking for a Residential Investment or a purpose built flat to live in? This is superb second floor flat forms part of a private development consisting of four flats and a mews house. The development is located on Lea Bridge Road and provides easy access to local tubes and bus routes into central London. This particular apartment is located on second floor provides an excellent & spacious layout. The large separate lounge is ideal for hosting guests. The layout further comprises of Two double bedrooms, separate kitchen and a good-sized family bathroom.

The kitchen features handless design with good quality cabinets and integrated appliances. The bathroom is done up in a matching suite and features good sized bath with overhead shower.

1-20

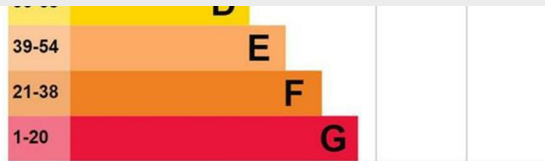
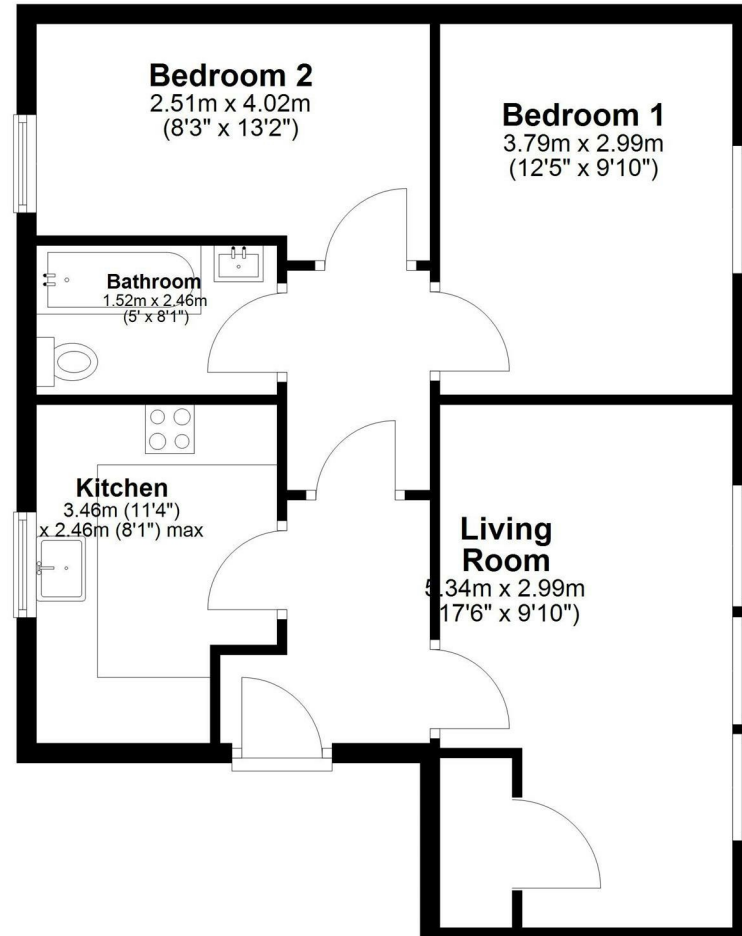
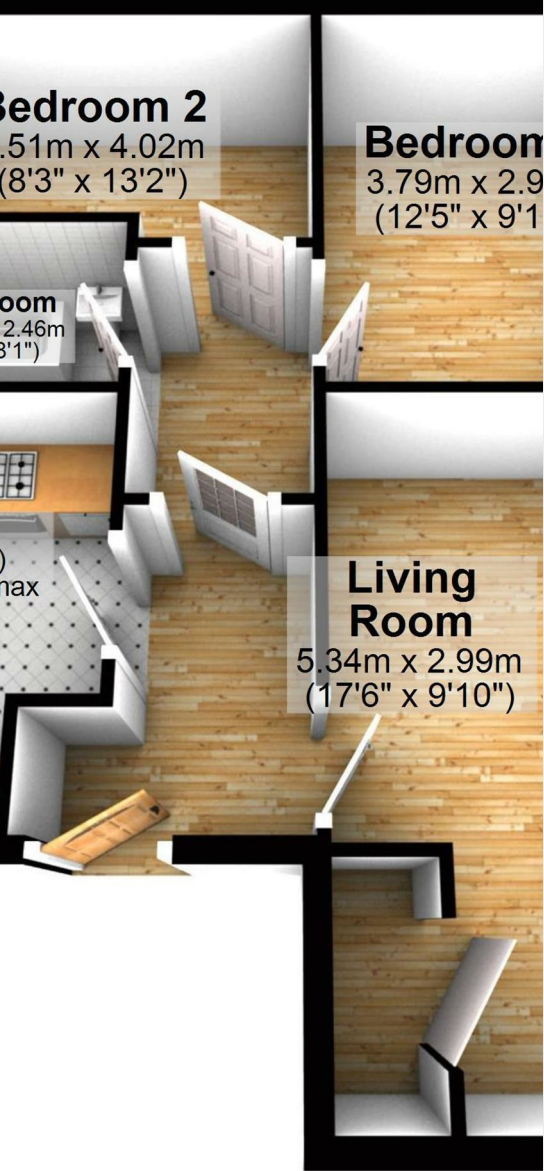
G

The graph shows this property's current and potential energy rating.



Second Floor

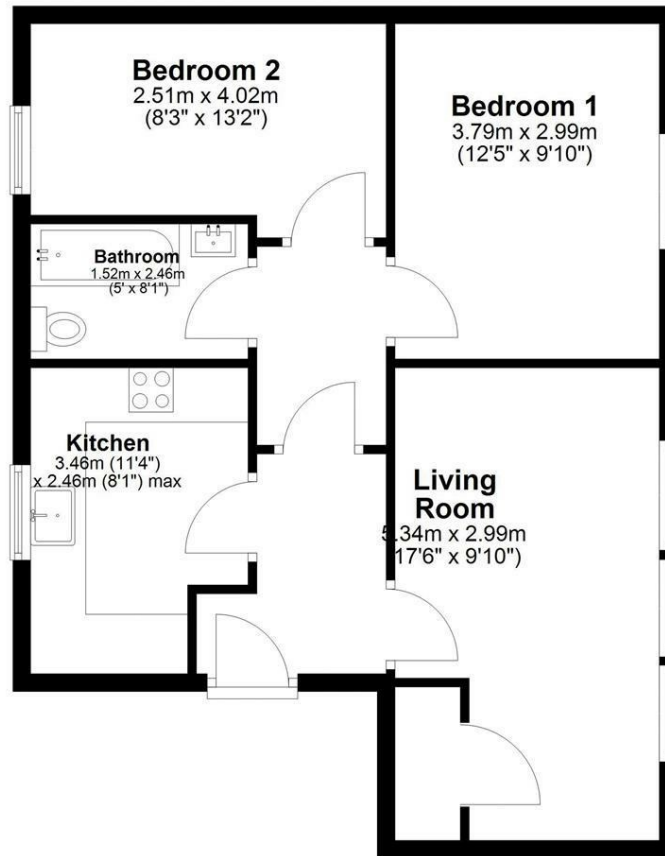
Approx. 53.7 sq. metres (578.5 sq. feet)



The graph shows this property's current and potential energy rating.

Second Floor

Approx. 53.7 sq. metres (578.5 sq. feet)



Total area: approx. 53.7 sq. metres (578.5 sq. feet)

337 Forest Road

London

E17 5JR

02085277007

enquiries@completion.co.uk

completion.co.uk

Energy Efficiency Rating		
	Current	Potential
Very energy efficient - lower running costs		
(92 plus) A		
(81-91) B	81	81
(69-80) C		
(55-68) D		
(39-54) E		
(21-38) F		
(1-20) G		
Not energy efficient - higher running costs		
England & Wales	EU Directive 2002/91/EC	