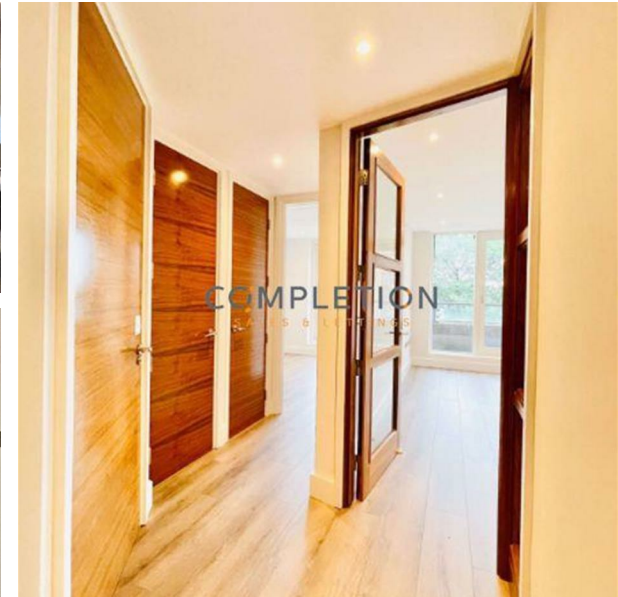


305 Westcliffe Apartments, West End Quay South Wharf Road, London,
Greater London, W2 1JB
Guide Price £600,000

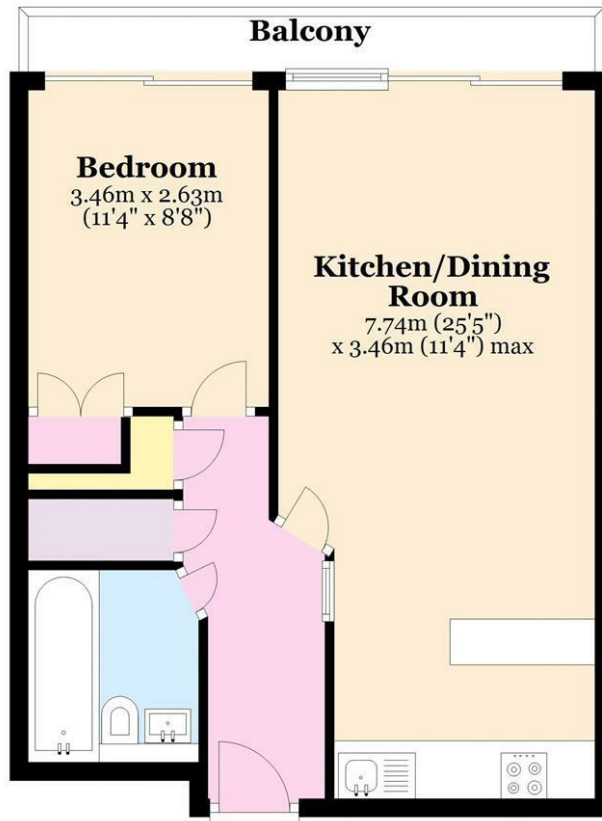
COMPLETION
SALES & LETTINGS



Completion Lettings are now offering a grand one bedroom apartment positioned in a location of sheer prominence.

Third Floor

Approx. 47.2 sq. metres (508.1 sq. feet)



Total area: approx. 47.2 sq. metres (508.1 sq. feet)

All measurements are appropriate and should not be relied upon.
Plan produced using PlanUp.

337 Forest Road, London, E17 5JR

02085277007

enquiries@completion.co.uk

completion.co.uk

Energy Efficiency Rating		Current	Potential
Very energy efficient - lower running costs			
(92 plus) A			
(81-91) B			
(69-80) C			
(55-68) D			
(39-54) E			
(21-38) F			
(1-20) G			
Not energy efficient - higher running costs			
England & Wales		EU Directive 2002/91/EC	