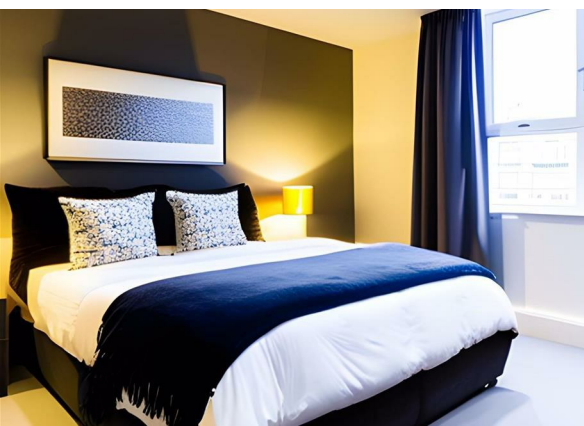
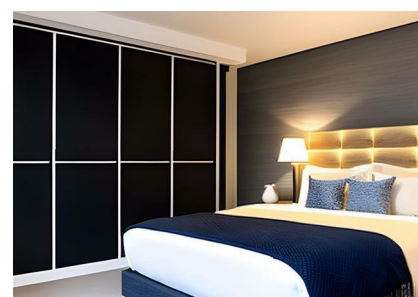
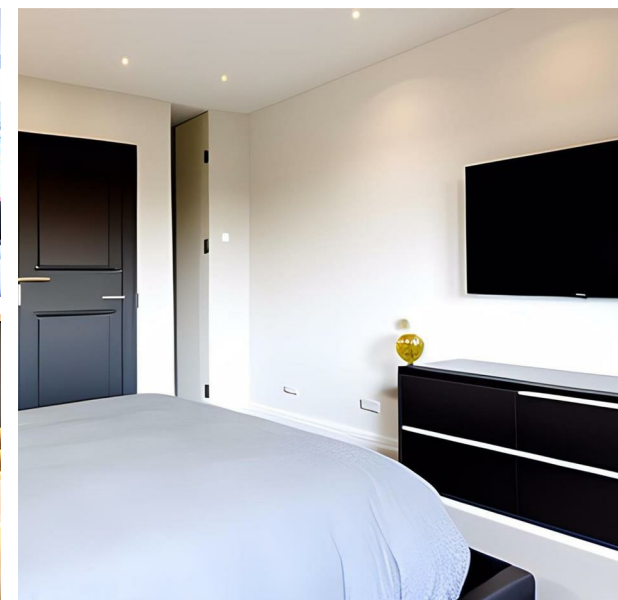
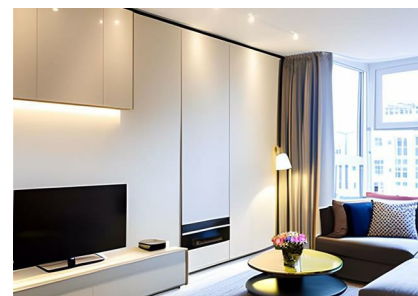


Flat 3, 200 Ruckholt Road, Leyton, London, E10 5FA  
Guide Price £650,000

**COMPLETION**  
SALES & LETTINGS



Flat 3, 200 Ruckholt Road, Leyton, London, E10 5FA

Guide Price £650,000

Council Tax Band:

NEW BUILD | LONG LEASE | 1 - 3 Bedrooms | COMMUNAL GARDEN | CYCLE STORAGE | PRIVATE BALCONIES | CLOSE TO LEYTON STATION | CLOSE TO STRATFORD WESTFIELD SHOPPING CENTRE | CLOSE TO OLYMPIC PARK STRATFORD | SERVICE CHARGE UPON APPLICATION | 999 YEARS LEASE







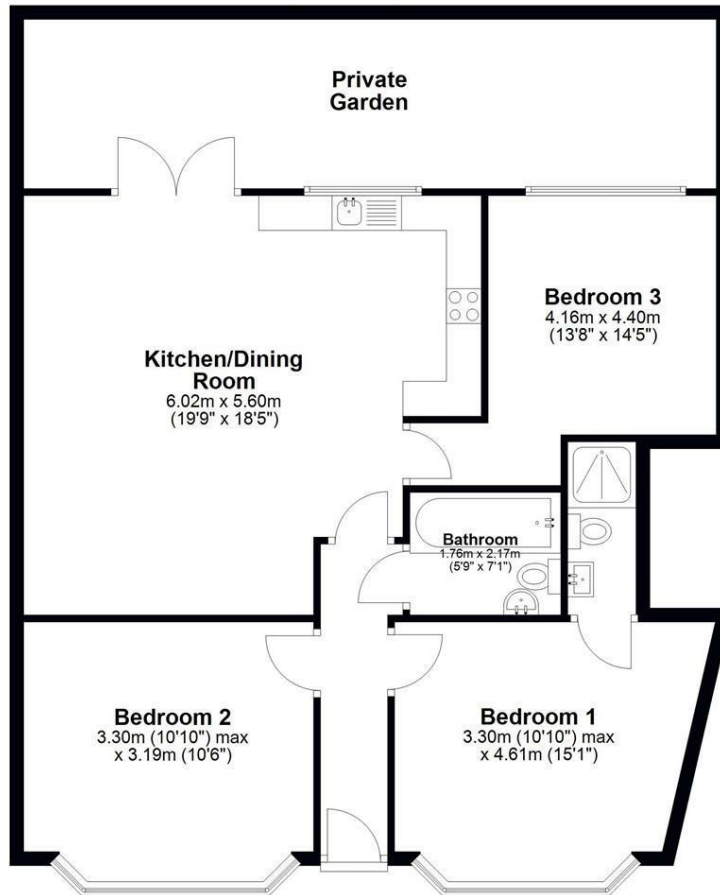






**Ground Floor**

Approx. 90.4 sq. metres (973.2 sq. feet)



Total area: approx. 90.4 sq. metres (973.2 sq. feet)

337 Forest Road

London

E17 5JR

02085277007

enquiries@completion.co.uk

completion.co.uk

Energy Efficiency Rating		
	Current	Potential
Very energy efficient - lower running costs		
(92 plus) <b>A</b>		
(81-91) <b>B</b>		
(69-80) <b>C</b>		
(55-68) <b>D</b>		
(39-54) <b>E</b>		
(21-38) <b>F</b>		
(1-20) <b>G</b>		
Not energy efficient - higher running costs		
England & Wales	EU Directive 2002/91/EC	