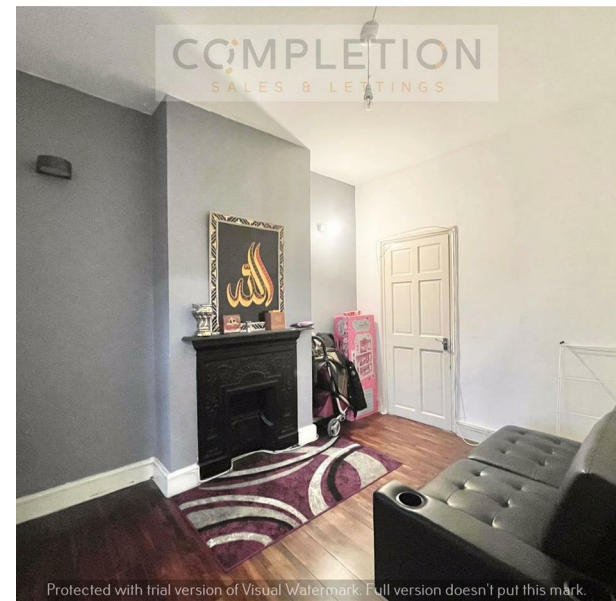


95 Palmerston Road, London, Greater London, E17 6PU
Guide Price £600,000

COMPLETION
SALES & LETTINGS



95 Palmerston Road, London, Greater London, E17 6PU

Guide Price £600,000

Council Tax Band: C

THREE DOUBLE BEDROOMS | VICTORIAN PROPERTY | EXCELLENT LOCATION | POTENTIAL FOR FURTHER EXTENSION

Looking for a Victorian property to design in your own style and standard? We are pleased to offer this excellent three-bedroom, two reception room large Victorian house for sale. The property layout consists of a dual reception room, a ground floor bathroom, a separate large dining room leading to kitchen, three double bedrooms, a first-floor shower room and a nice size garden with an out building.

The property has a bright and airy feel throughout and it is ideal for adding more room with a loft conversion and rear extension subject to necessary consent under permitted development.

COMPLETION
SALES & LETTINGS



COMPLETION

SALES & LETTINGS



COMPLETION
SALES & LETTINGS

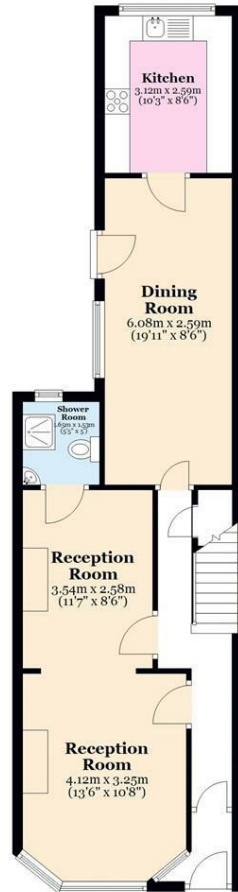




version of Visual Watermark. Full version do

Ground Floor

Approx. 59.2 sq. metres (637.0 sq. feet)



First Floor

Approx. 46.3 sq. metres (498.6 sq. feet)



Total area: approx. 105.5 sq. metres (1135.6 sq. feet)

All measurements are appropriate and should not be relied upon.
Plan produced using PlanUp.

337 Forest Road

London

E17 5JR

02085277007

enquiries@completion.co.uk

completion.co.uk

Energy Efficiency Rating		Current	Potential
Very energy efficient - lower running costs			
(92 plus) A			
(81-91) B			
(69-80) C			
(55-68) D			
(39-54) E			
(21-38) F			
(1-20) G			
Not energy efficient - higher running costs			
England & Wales		EU Directive 2002/91/EC	