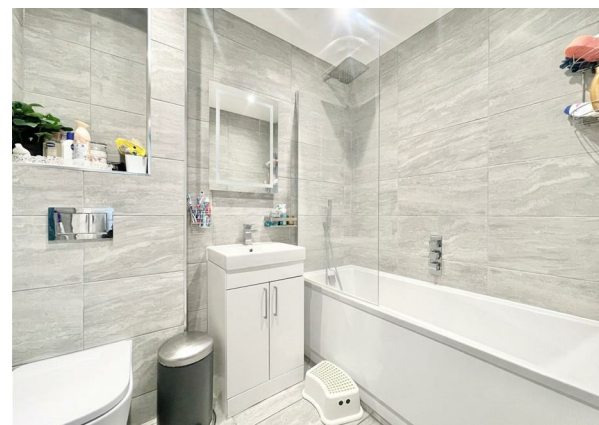


Flat 1, 408 Lea Bridge Road, London, Greater London, E10 7DY
Guide Price £375,000



Flat 1, 408 Lea Bridge Road, London, Greater London, E10 7DY

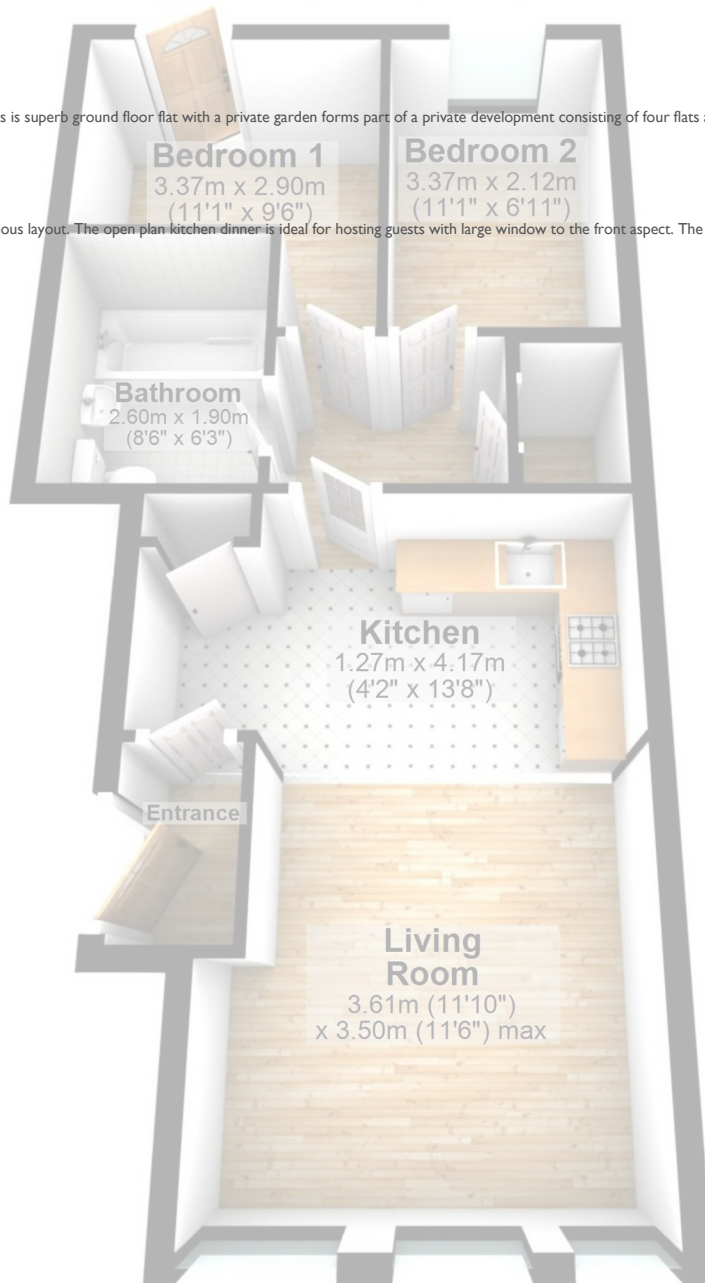
Approx. 46.8 sq. metres (503.6 sq. feet)

Guide Price £375,000

Council Tax Band: B

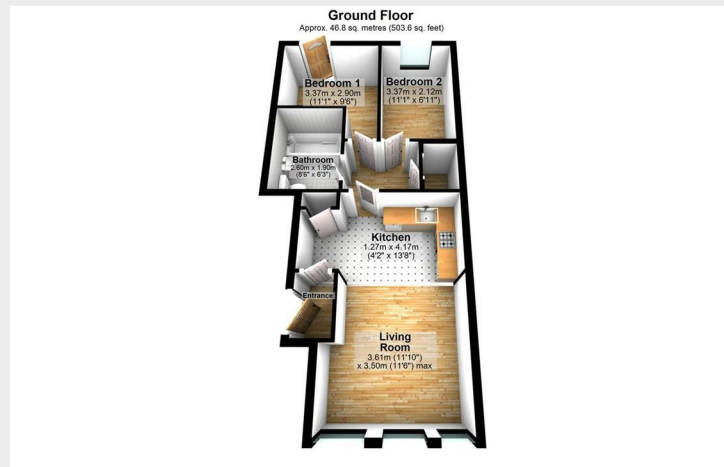
Guide Price £375,000 - £400,000 Looking for a Residential Investment or a purpose built flat to live in? This is superb ground floor flat with a private garden forms part of a private development consisting of four flats and a mews house. The development is located on Lea Bridge Road and provides easy access to local tubes and bus routes into central London.

This particular apartment is located on ground floor and has its own garden, it provides an excellent & spacious layout. The open plan kitchen/dinner is ideal for hosting guests with large window to the front aspect. The layout further comprises of Two double bedrooms and a good-sized family bathroom. The main bedroom also leads to a large private back garden mainly paved.

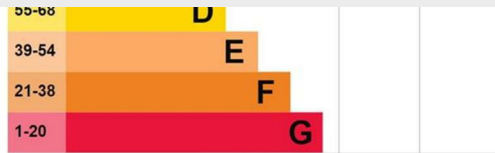
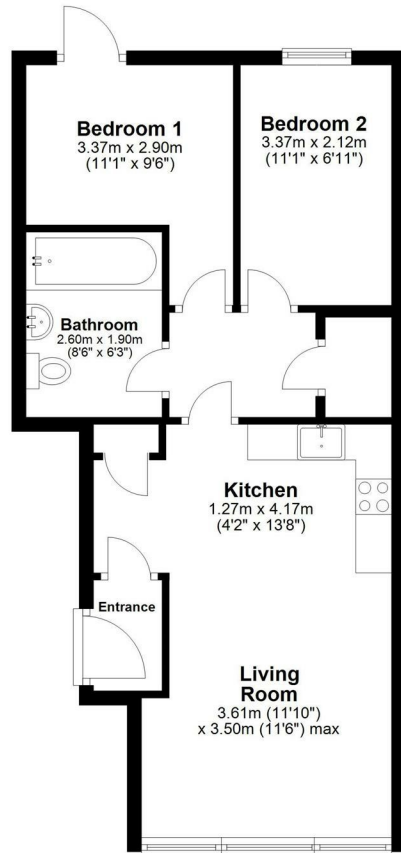


Total area: approx. 46.8 sq. metres (503.6 sq. feet)





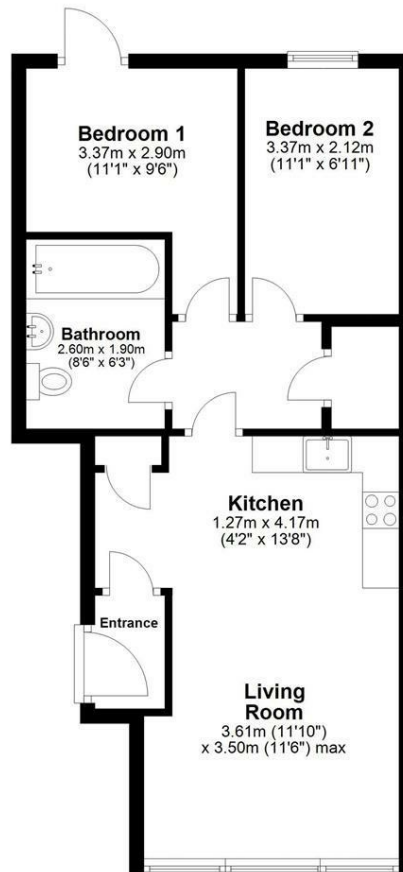
Ground Floor
Approx. 46.8 sq. metres (503.6 sq. feet)



The graph shows this property's current and potential energy rating.

Ground Floor

Approx. 46.8 sq. metres (503.6 sq. feet)



Total area: approx. 46.8 sq. metres (503.6 sq. feet)

337 Forest Road

London

E17 5JR

02085277007

enquiries@completion.co.uk

completion.co.uk

Energy Efficiency Rating		
	Current	Potential
Very energy efficient - lower running costs		
(92 plus) A		
(81-91) B		
(69-80) C	69	69
(55-68) D		
(39-54) E		
(21-38) F		
(1-20) G		
Not energy efficient - higher running costs		
England & Wales	EU Directive 2002/91/EC	