

9B Chingford Road, London, Greater London, E17 4PW
Guide Price £300,000



9B Chingford Road, London, Greater London, E17 4PW

Guide Price £300,000

Council Tax Band:

VICTORIAN CONVERSION | CHAIN FREE | CASH BUYER ONLY | LEASE 64 Years Approx. | EXCELLENT LOCATION | TWO BEDROOMS | POTENTIAL FOR LOFT CONVERSION

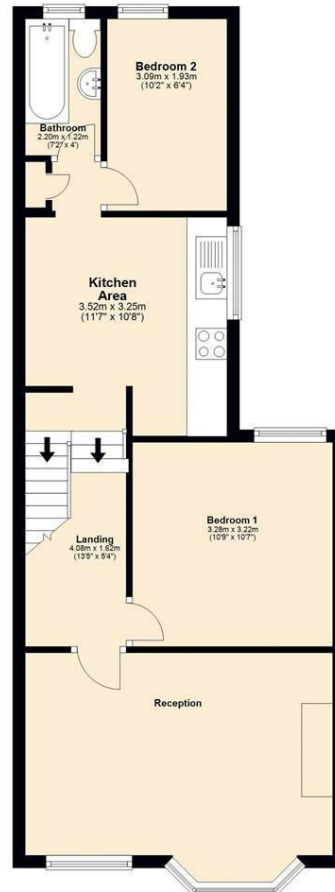


COMPLETION
SALES & LETTINGS

7A

First Floor

Approx. 55.2 sq. metres (594.1 sq. feet)



Total area: approx. 55.2 sq. metres (594.1 sq. feet)

337 Forest Road

London

E17 5JR

02085277007

enquiries@completion.co.uk

completion.co.uk

Energy Efficiency Rating		
	Current	Potential
Very energy efficient - lower running costs		
(92 plus) A		
(81-91) B		
(69-80) C		
(55-68) D		
(39-54) E		
(21-38) F		
(1-20) G		
Not energy efficient - higher running costs		
England & Wales	EU Directive 2002/91/EC	