



14 Clifton Avenue

Accrington, Accrington

A beautifully presented, three bedroom true bungalow situated in a very popular location that presents a prime opportunity to this that require accommodation over one level. Its internal space and its 'ready to move into' accommodation are sure to impress any buyer.

Council Tax band: B

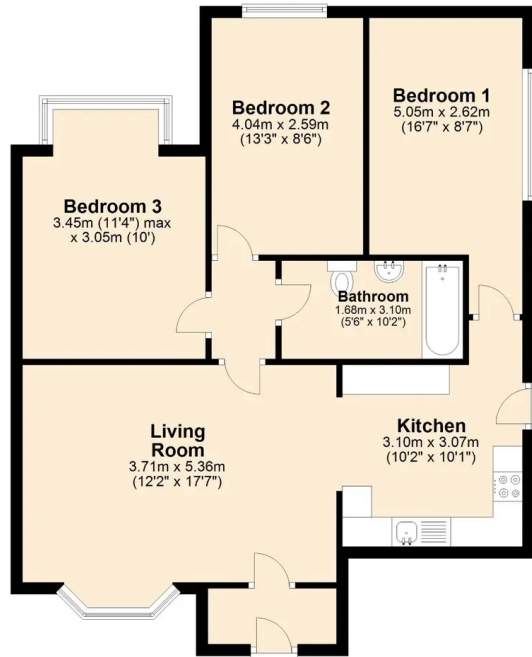
Tenure: Leasehold

EPC Energy Efficiency Rating: E

EPC Environmental Impact Rating: F

- True bungalow
- Three bedrooms
- Off road parking
- Popular location
- Well presented throughout
- Chain free





Ground Floor

Approx. 75.5 sq. metres (813.2 sq. feet)

Total area: approx. 75.5 sq. metres (813.2 sq. feet)