



MARTINS ESTATES

SALES AND LETTINGS

Martins Estates Sales And Lettings High Street
Ashford
Kent
TN24 8SF

Tel: 01233610444



Swallows Station Approach, Littlestone, TN28 8LU

£1,700

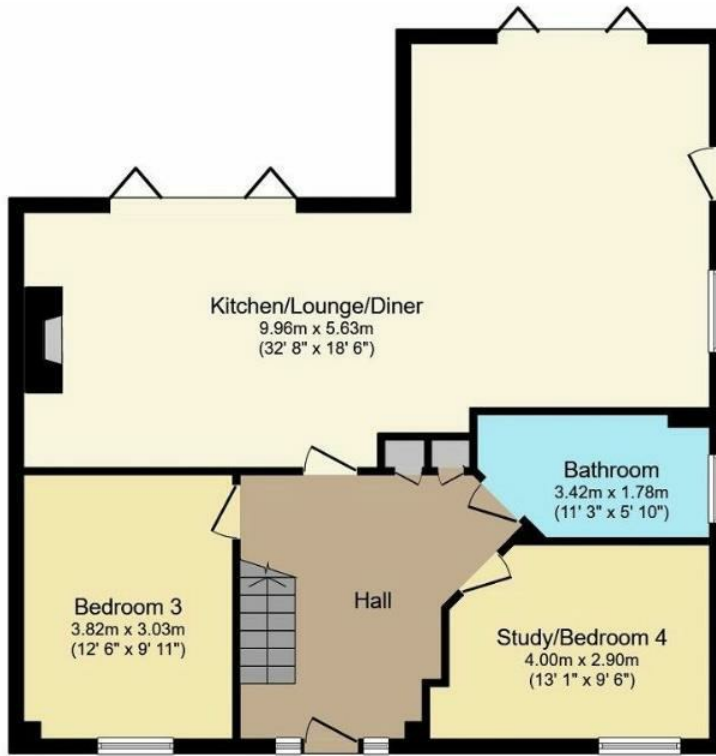
Welcome to this stunning property located in the desirable area of Station Approach, Littlestone. This beautifully refurbished semi-detached bungalow boasts a generous 1,390 sq ft of living space, perfect for a growing family or those who love to entertain.

As you step inside, you'll be greeted by a spacious reception room, ideal for relaxing with family or hosting guests. With four well-appointed bedrooms and three modern bathrooms, there's plenty of room for everyone to enjoy their own space.

The highlight of this property is the stylish kitchen featuring elegant granite worktops and sleek bi-fold doors that flood the space with natural light, creating a seamless indoor-outdoor living experience. Imagine enjoying your morning coffee overlooking the garden or hosting a summer barbecue with friends.

Convenience is key with off-road parking available for multiple vehicles, ensuring you never have to worry about finding a space after a long day. This property is ready to welcome its new owners, offering a perfect blend of comfort, style, and functionality.

Don't miss out on the opportunity to make this house your home. Contact us now to arrange a viewing and experience the charm of this Littlestone gem for yourself.



Ground Floor

Total floor area 129.1 sq.m. (1,390 sq.ft.) approx



Energy Efficiency Rating		Current	Potential
Very energy efficient - lower running costs			
(92 plus) A			88
(81-91) B		71	
(69-80) C			
(55-68) D			
(39-54) E			
(21-38) F			
(1-20) G			
Not energy efficient - higher running costs			
England & Wales		EU Directive 2002/91/EC	

Environmental Impact (CO ₂) Rating		Current	Potential
Very environmentally friendly - lower CO ₂ emissions			
(92 plus) A			
(81-91) B			
(69-80) C			
(55-68) D			
(39-54) E			
(21-38) F			
(1-20) G			
Not environmentally friendly - higher CO ₂ emissions			
England & Wales		EU Directive 2002/91/EC	

69 HIGH STREET, ASHFORD, KENT TN24 8SF

Tel: 01233 610444

www.martinsstates.co.uk

email: sales@martinsstates.co.uk



Martins Estates Property Management Ltd
Registered in England and Wales No. 10031401
Registered office: 69 High Street, Ashford, Kent, TN24 8SF
Martins Wilkins T/A Martins Estates Sales and Lettings