



35 Melbourne Way, Enfield, EN1 1XG

Offers Over £600,000

Lanes
ESTATE AGENTS

35 Melbourne Way, Enfield, EN1 1XG

GUIDE PRICE £600,000 - £620,000 Nestled in the desirable area of Melbourne Way, Enfield, this charming semi-detached house offers a perfect blend of comfort and convenience. This property is ideal for families or those seeking extra space. The layout includes two inviting reception rooms, providing ample room for relaxation and entertaining. Additionally, a separate office space is available, perfect for those who work from home or require a quiet area for study.

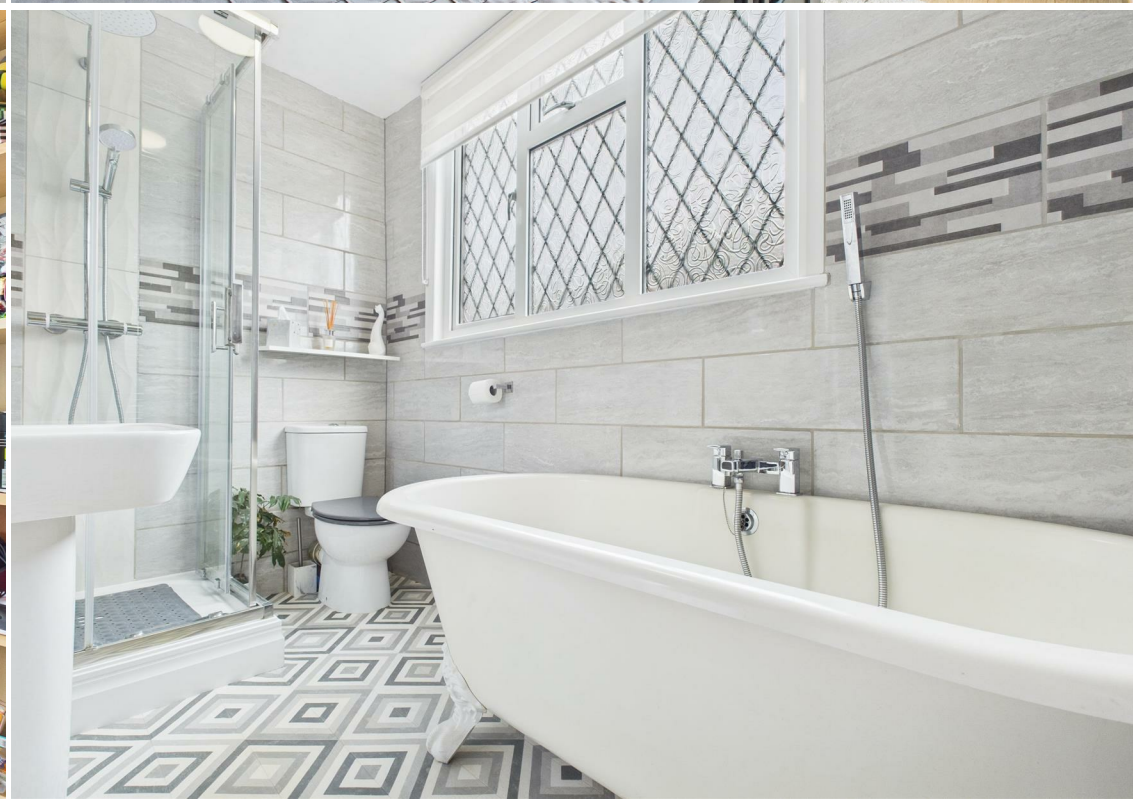
The ground floor features a convenient W.C, while the first floor boasts a stylish four-piece bathroom suite, ensuring that both functionality and comfort are at the forefront of this home. Off-street parking is an added benefit, making it easy for residents and guests alike.

Location is key, and this property is within walking distance to Bush Hill Park Station, offering excellent transport links for commuters. The surrounding area is well-served by local amenities, parks, and schools, making it a wonderful place to call home.

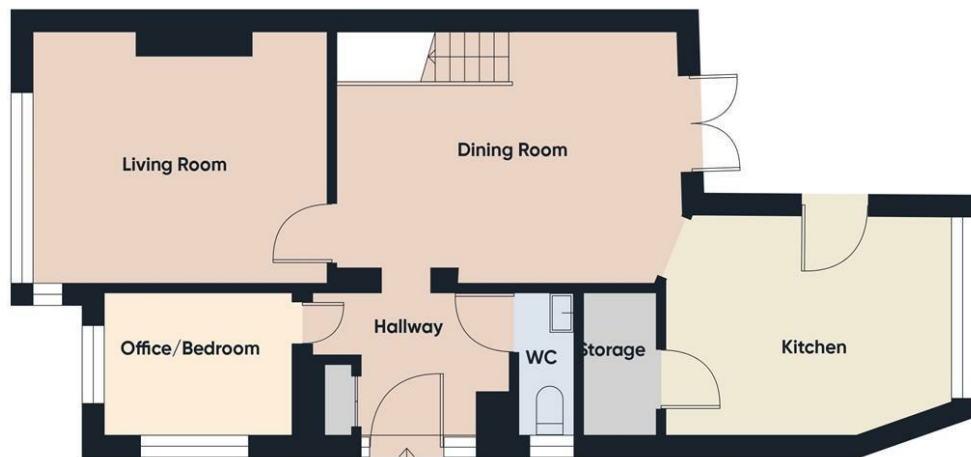
This three/four bedroom semi-detached house is a fantastic opportunity for those looking to settle in a vibrant community while enjoying the comforts of a spacious family home. Don't miss the chance to view this delightful property.



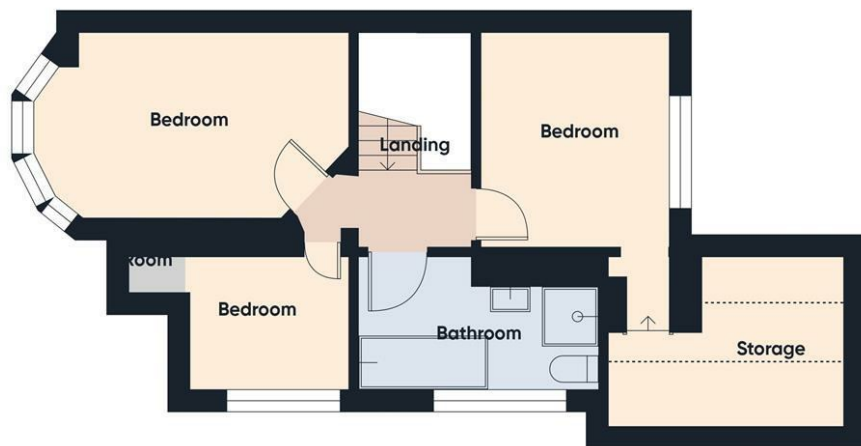
Hallway Frosted double glazed window to side aspect, laminate flooring, storage cupboards, radiator, doors leading to W.C, office and dining room.	Double glazed window to side aspect, laminate flooring, radiator and walk in wardrobe.
W.C Frosted double glazed window to side aspect, vanity sink with mixer tap, low level W.C, spotlights and part tiled walls.	Bathroom 10'4" x 5'7" (3.15m x 1.70m) Frosted double glazed window to side aspect, four piece bathroom suite comprising of freestanding claw foot bath with mixer tap and shower attachment, shower cubicle with wall mounted shower, pedestal wash hand basin with mixer tap, low flush W.C, heated towel rail, and tiled walls.
Office/Bedroom Four 8'10" x 7'9" (2.69m x 2.36m) Dual aspect double glazed windows, laminate flooring and radiator.	Exterior - Front Pattern brick paved driveway, pattern brick paved shared pathway with gate leading to rear garden.
Dining Room 15'5" x 11'4" (4.70m x 3.45m) Laminate flooring, stairs leading to first floor landing, under stair storage cupboard, double glazed patio doors leading to rear garden, radiator, archway leading to kitchen and door leading to lounge.	Exterior - Rear Artificial lawn area, two paved area, timber shed and gate leading to side access.
Lounge 13'4" x 11'3" (4.06m x 3.43m) Double glazed window to front aspect, laminate flooring, radiator and decorative fireplace.	Lanes Estate Agents Enfield Reference Number ET5256/AX/AX/AX/290525
Kitchen 13'4" x 9'9" (4.06m x 2.97m) Double glazed window to rear aspect, double glazed door leading to rear garden, eye and base level units with work top surfaces, space for fridge/freezer and dishwasher, fitted double oven with five point gas hob and extractor hood, sink with mixer tap and drainer unit, radiator, spotlights, tiled floor, splashbacks, large storage cupboard with plumbing for washing machine and 'Worcester Bosch' combination boiler.	
First Floor Landing Loft access and doors leading to all rooms.	
Bedroom One 14'6" (into bay) x 8'7" (4.42m (into bay) x 2.62m) Double glazed window to front aspect, laminate flooring, radiator and fitted wardrobes.	
Bedroom Two 10'4" x 8'6" (3.15m x 2.59m) Double glazed window to rear aspect, laminate flooring, radiator and door leading to large storage area.	
Large Storage Area 10'6" x 4'3" (3.20m x 1.30m) (Restricted Head Height) Double glazed window to rear aspect, Velux window and laminate flooring.	
Bedroom Three 7'3" x 6'9" (2.21m x 2.06m)	







Floor 0



Floor 1

Approximate total area⁽¹⁾

1020 ft²

Reduced headroom

46 ft²

(1) Excluding balconies and terraces

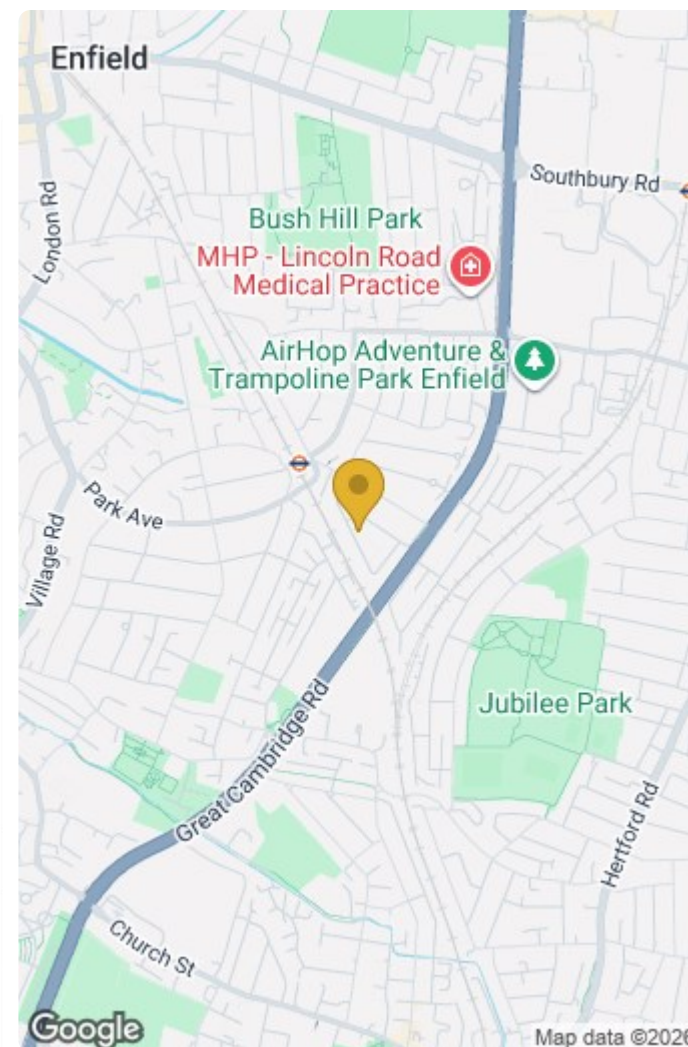
Reduced headroom

..... Below 5 ft

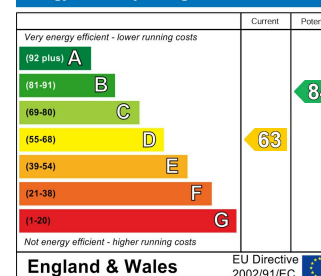
While every attempt has been made to ensure accuracy, all measurements are approximate, not to scale. This floor plan is for illustrative purposes only.

Calculations are based on RICS IPMS 3C standard.

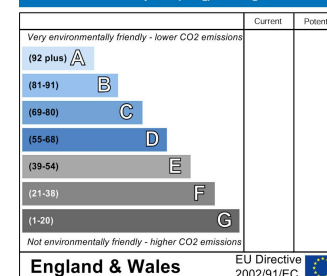
GIRAFFE360



Energy Efficiency Rating



Environmental Impact (CO₂) Rating



IMPORTANT NOTICE TO PROSPECTIVE PURCHASERS

We are not qualified to test any apparatus, equipment, fixtures and fittings or services so cannot that they are in working order or fit for their intended purpose. We do not have access to property deeds or lease documents so prospective purchasers should rely only on information given by their solicitors on relevant matters. Measurements are approximate and are only intended to provide a guide.

7 Savoy Parade Southbury Road, Enfield, EN1 1RT

Tel: 020 8342 0101 Email: et@lanesproperty.co.uk www.lanesproperty.co.uk

