

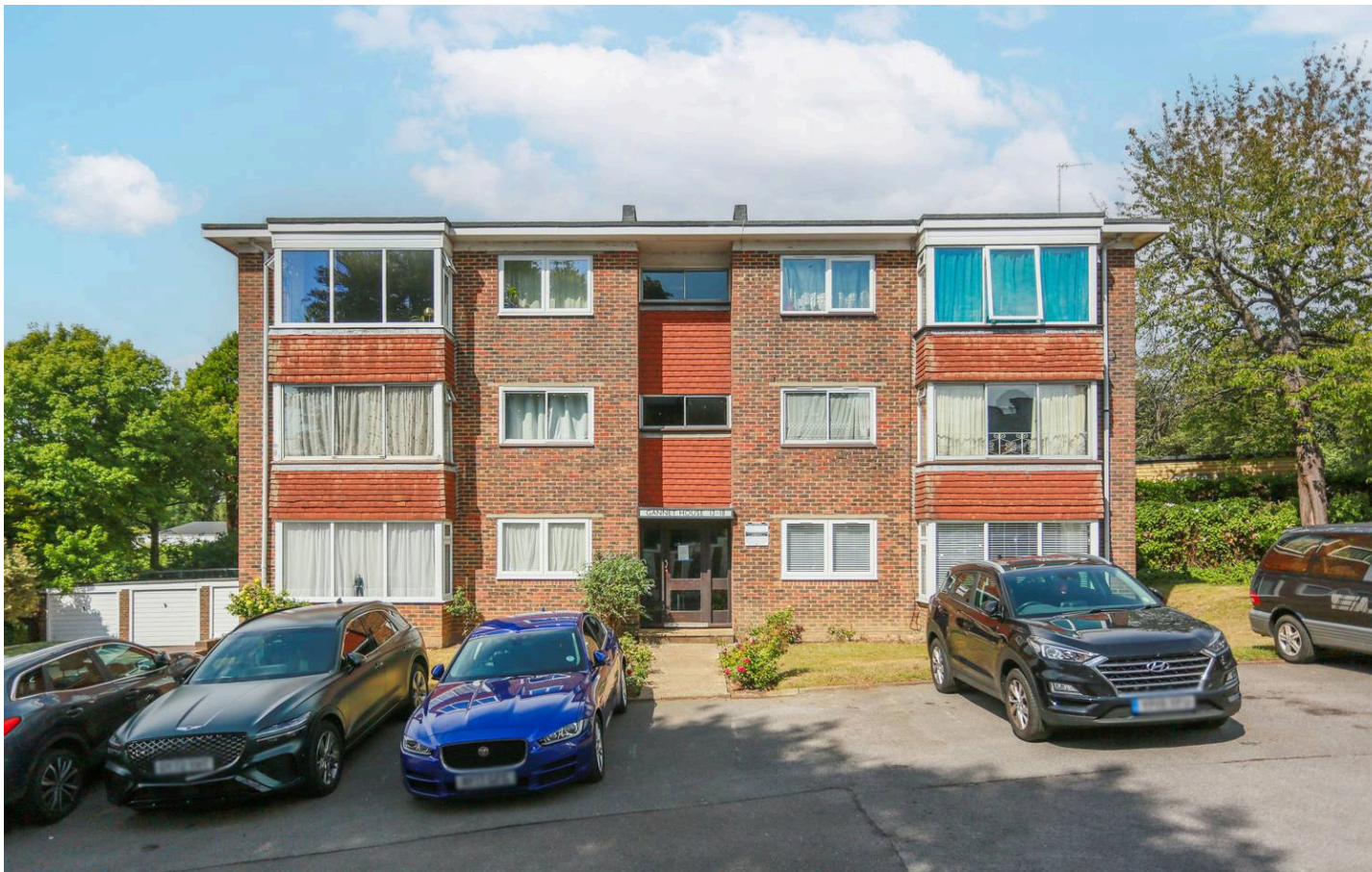


17 Gannet House Goldstone Crescent, Hove

Hove

Guide Price £325,000





## 17 Gannet House Goldstone Crescent

Hove, Hove

\*\*\* GUIDE PRICE £325,000 – £350,000 \*\*\*

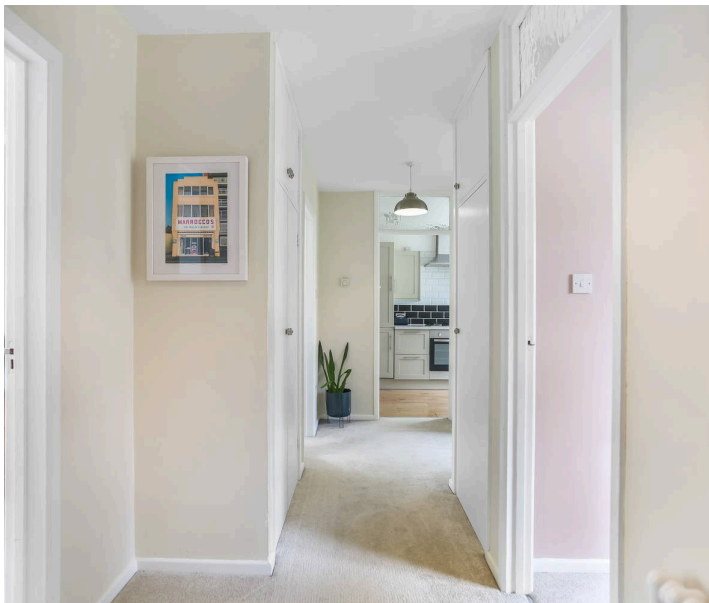
Situated near to Hove Park and Hove Train Station, a beautifully-presented and spacious, TWO BEDROOM SECOND FLOOR APARTMENT with RESIDENT'S PARKING (offered on a first come first served basis) and a SHARE OF THE FREEHOLD

An exceptionally well-presented flat, beautifully maintained and finished to a high decorative standard throughout. The spacious living room is a standout feature, enhanced by an expansive bay window that floods the space with abundant natural light, creating a warm and inviting atmosphere. The separate kitchen is thoughtfully designed, offering generous worktop areas and ample storage—perfect for both everyday cooking and entertaining guests with ease.

The main double bedroom is complemented by sleek built-in wardrobes, providing excellent storage, while the second bedroom offers a well-proportioned space, perfectly suited for use as a guest room, nursery, or a dedicated home office.

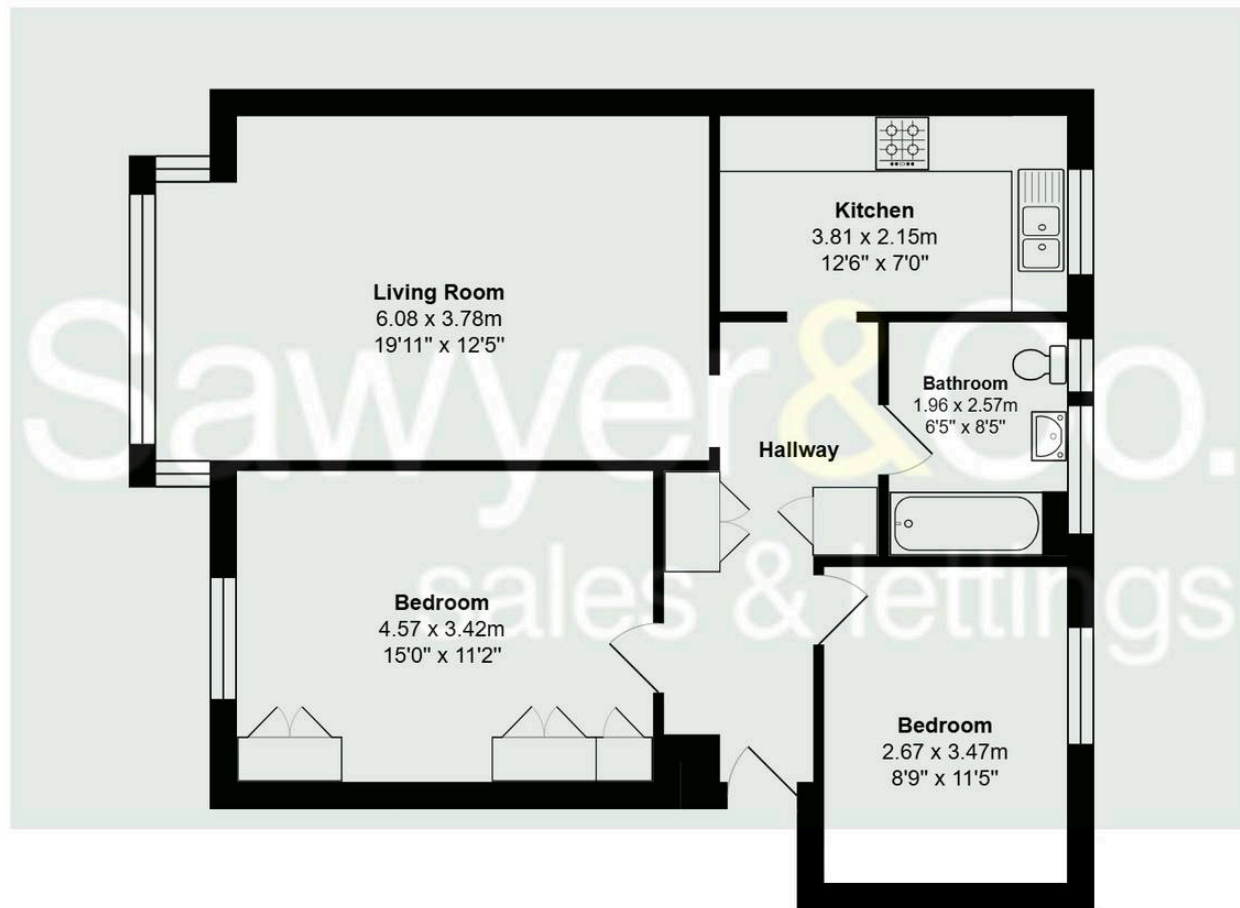
This property also benefits from access to a communal car park, providing convenient off-street parking for residents on a first come first served basis.

Sitting near to the green open spaces of Hove Park there is an abundance of outdoor facilities close to hand ranging from tennis courts,









Total Area: 72.0 m<sup>2</sup> ... 775 ft<sup>2</sup>

All measurements are approximate and for display purposes only.





## Sawyer & Co- Hove

52 Church Road, Hove - BN3 2FN

01273 778844 • [clientservices@sawyerandco.co.uk](mailto:clientservices@sawyerandco.co.uk) • [www.sawyerandco.co.uk/](http://www.sawyerandco.co.uk/)

We wish to inform prospective purchasers that we have prepared these sales particulars as a general guide. We have not carried out a detailed survey, nor tested the services, appliances and specific fittings. Room sizes are approximate.