



## Pointalls Close, London, N3 2RR

£2,200 Per Month -

A newly refurbished 3-bedroom semi-detached house with off-street parking for 2 cars.

On the ground floor, the property features a spacious reception room, a modern bathroom and a brand-new eat-in kitchen, which leads out to a patio garden.

On the first floor, you will find 2 double bedrooms and 1 large single bedroom.

The property is well located and falls within the catchment area for Manorside and Tudor Primary Schools, and 0.9 miles from East Finchley underground station.

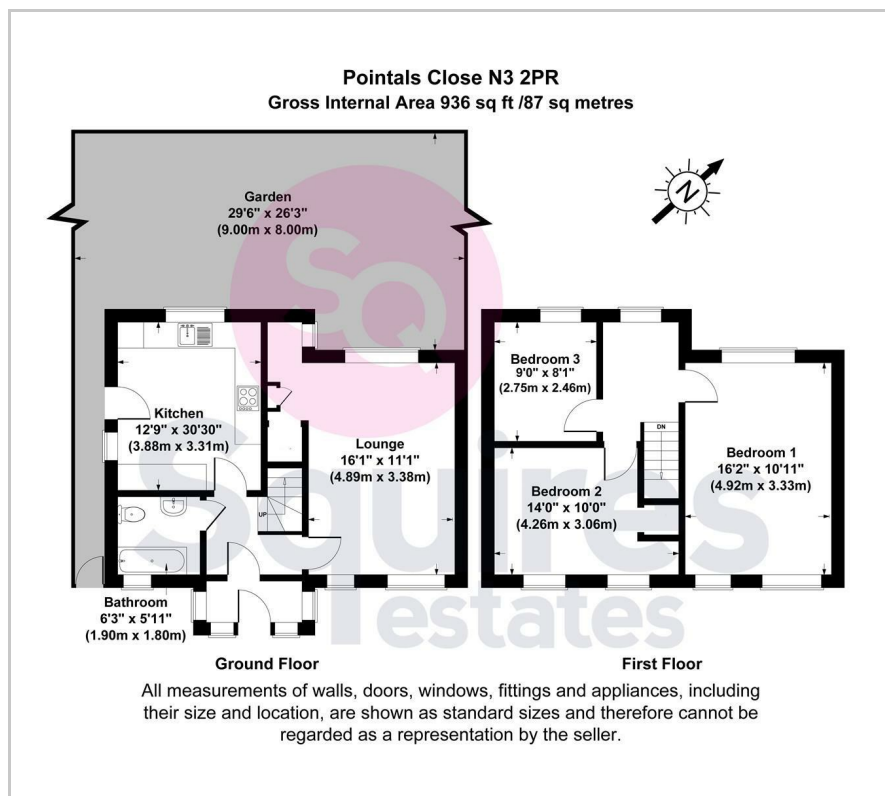
It is offered unfurnished and is ready for immediate occupancy.

Barnet Council Tax Band: D  
Deposit: £2538

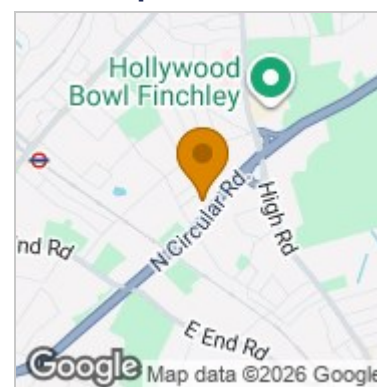
- 3 Bedroom Semi-detached house
- Newly refurbished
- Brand new kitchen
- Off street parking for 2 cars
- Patio garden
- Unfurnished
- Tax band D
- Available immediately



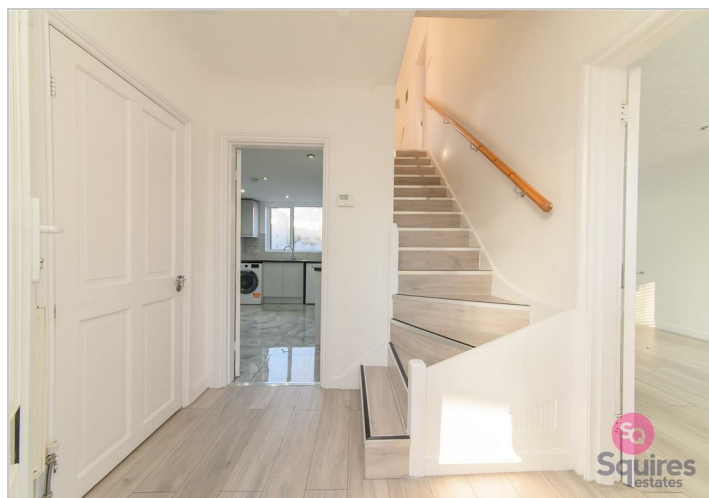
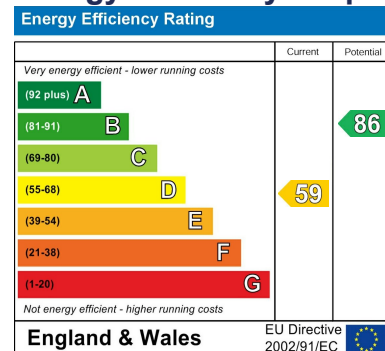
## Floor Plan



## Area Map



## Energy Efficiency Graph



These particulars, whilst believed to be accurate are set out as a general outline only for guidance and do not constitute any part of an offer or contract. Intending purchasers should not rely on them as statements of representation of fact, but must satisfy themselves by inspection or otherwise as to their accuracy. No person in this firm's employment has the authority to make or give any representation or warranty in respect of the property.

### Finchley Branch

181a Squires Lane,  
Finchley,  
London N3 2QS  
Tel 020 8343 2111

### Hendon Branch

16 Central Circus Parade,  
Queens Road, Hendon,  
London NW4 3AS  
Tel 020 8202 0808

### Mill Hill Branch

7 Thornfield Parade,  
Holders Hill Road, Mill Hill,  
London NW7 1LN  
Tel 020 8349 3030

