



Longland Drive, London, N20 8HA

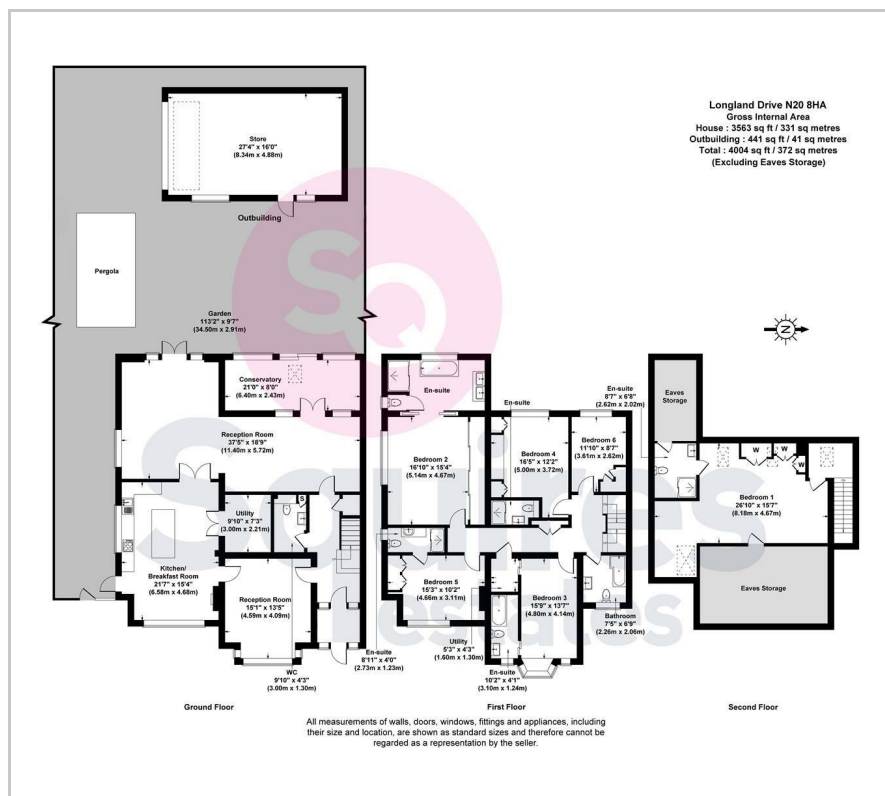
£6,000 Per Week -

A stunning spacious family home (over 3,500 square foot). The property is a semi-detached corner house, located just off Totteridge Lane, moments from Totteridge & Whetstone Underground Station (0.2 miles), Whetstone's lovely High Road and several green spaces. The property includes six bedrooms, five bathrooms, a large open reception area, large kitchen/breakfast room, further separate reception room, dining room, conservatory, utility room and downstairs WC. The house also includes a large garden with a pergola, [a garage] and a spacious off street driveway (for 3 cars). Unfurnished, suitable for families and available at the end of July.

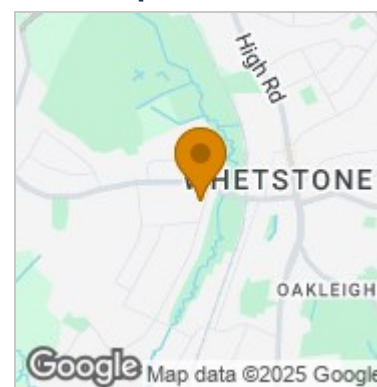
Deposit £6923.07
Council tax band G

- Six bedrooms
- Detached house
- Garage
- sq foot
- Large garden
- Ample parking
- Council tax band G
- Available end of July

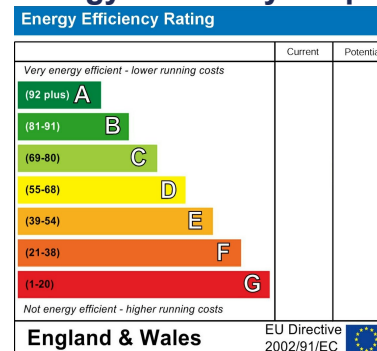
Floor Plan



Area Map



Energy Efficiency Graph



These particulars, whilst believed to be accurate are set out as a general outline only for guidance and do not constitute any part of an offer or contract. Intending purchasers should not rely on them as statements of representation of fact, but must satisfy themselves by inspection or otherwise as to their accuracy. No person in this firm's employment has the authority to make or give any representation or warranty in respect of the property.

Finchley Branch

181a Squires Lane,
Finchley,
London N3 2QS
Tel 020 8343 2111

Hendon Branch

16 Central Circus Parade,
Queens Road, Hendon,
London NW4 3AS
Tel 020 8202 0808

Mill Hill Branch

7 Thornfield Parade,
Holders Hill Road, Mill Hill,
London NW7 1LN
Tel 020 8349 3030

