

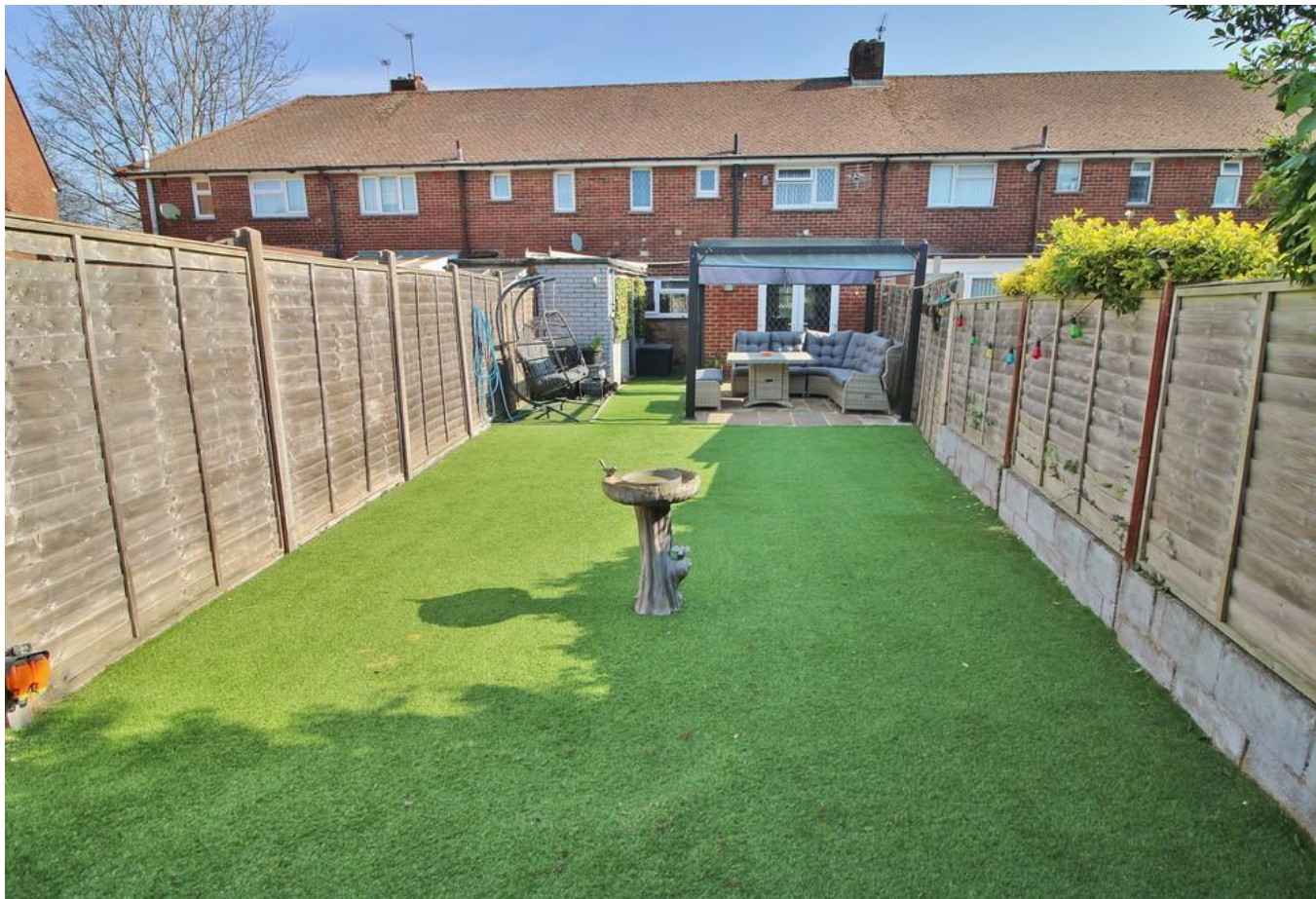


£275,000
7 Bedhampton Way
Havant, PO9 2DJ

PROPERTY SUMMARY

Beautifully presented extended family home with a show stopping four piece bathroom suite! This contemporary home comprises entrance hallway, modern fitted kitchen, spacious lounge and separate dining room opening out onto the garden with a South Westerly aspect. The first floor landing leads to two double bedrooms, a smaller dressing room/study/single bedroom and a fantastic sized bathroom with Jacuzzi bath and separate shower. Located approx. 1/2 mile walk from Havants mainline train station, there are also many local amenities nearby including several highly regarded schools. An internal viewing is essential to appreciate the size and quality of living space here, contact us today to arrange your appointment.

- 3 
- 1 
- 2 





HALLWAY

KITCHEN 11' 7" x 7' 10" (3.53m x 2.39m)

LOUNGE 20' 4" x 10' 10" (6.2m x 3.3m)

DINING ROOM 12' 1" x 9' 8" (3.68m x 2.95m)

LANDING

BEDROOM ONE 13' 2" x 11' (4.01m x 3.35m)

BEDROOM TWO 13' 2" x 9' (4.01m x 2.74m)

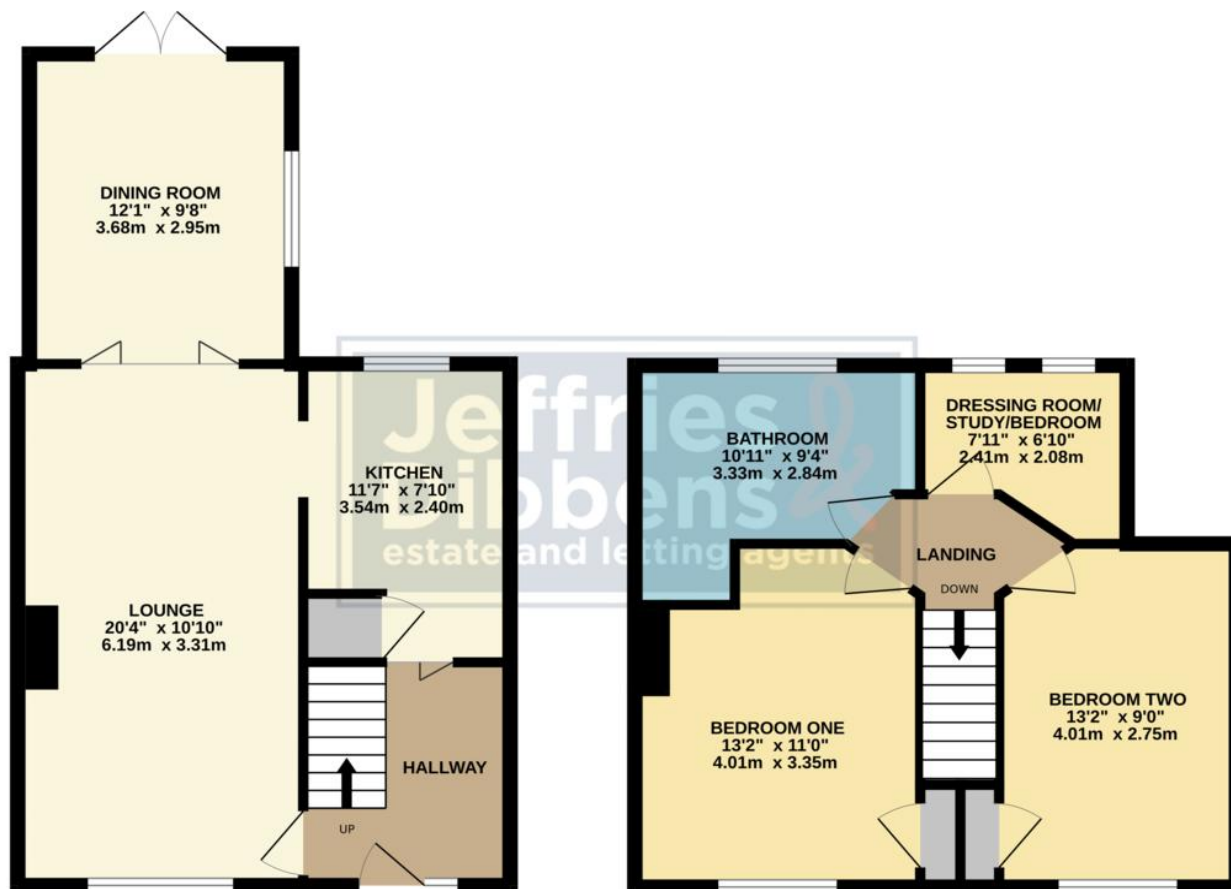
DRAWING ROOM/STUDY/BEDROOM
7' 11" x 6' 10" (2.41m x 2.08m)

BATHROOM 10' 11" x 9' 4" (3.33m x 2.84m)



GROUND FLOOR
496 sq.ft. (46.1 sq.m.) approx.

1ST FLOOR
434 sq.ft. (40.3 sq.m.) approx.



TOTAL FLOOR AREA : 930 sq.ft. (86.4 sq.m.) approx.

Whilst every attempt has been made to ensure the accuracy of the floorplan contained here, measurements of doors, windows, rooms and any other items are approximate and no responsibility is taken for any error, omission or mis-statement. This plan is for illustrative purposes only and should be used as such by any prospective purchaser. The services, systems and appliances shown have not been tested and no guarantee as to their operability or efficiency can be given.

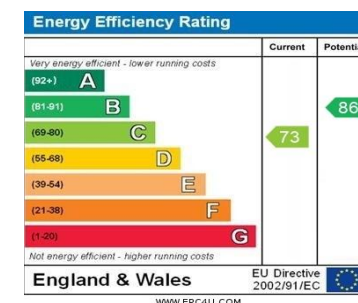
Made with Metropix ©2025

LOCAL AUTHORITY
Havant Borough Council

TENURE
Freehold

COUNCIL TAX BAND
Band B

VIEWINGS
By prior appointment only



Agents Note: Whilst every care has been taken to prepare these particulars, they are for guidance purposes only. All measurements are approximate and are for general guidance purposes only and whilst every care has been taken to ensure their accuracy, they should not be relied upon and potential buyers/tenants are advised to recheck the measurements

**Jeffries
Dibbens**
estate and letting agents

OFFICE ADDRESS
13 North Street, Havant,
Hampshire, PO9 1PW

CONTACT
023 9247 4737
havant@jeffries.co.uk
www.jdea.co.uk