

£265,000
17 Swarraton Road
West Leigh, PO9 2HH

PROPERTY SUMMARY

This three bedroom house is situated in Swarraton Road, West Leigh and comprises; a 17'1 lounge, kitchen and conservatory to the ground floor with three bedrooms and a bathroom to the first floor. Benefits include gas central heating, double glazing, a westerly aspect rear garden and no forward chain. To arrange your accompanied viewing, contact Jeffries and Dibbens (Havant).





LOUNGE

17' 1" x 14' 2" into bay (5.21m x 4.32m)

KITCHEN

17' 1" x 7' 1" (5.21m x 2.16m)

CONSERVATORY

10' 10" x 9' 4" (3.3m x 2.84m)

LANDING

BEDROOM ONE

11' 5" x 11' 4" (3.48m x 3.45m)

BEDROOM TWO

11' 5" x 7' 1" (3.48m x 2.16m)

BEDROOM THREE

10' 0" x 9' 5" max (3.05m x 2.87m)

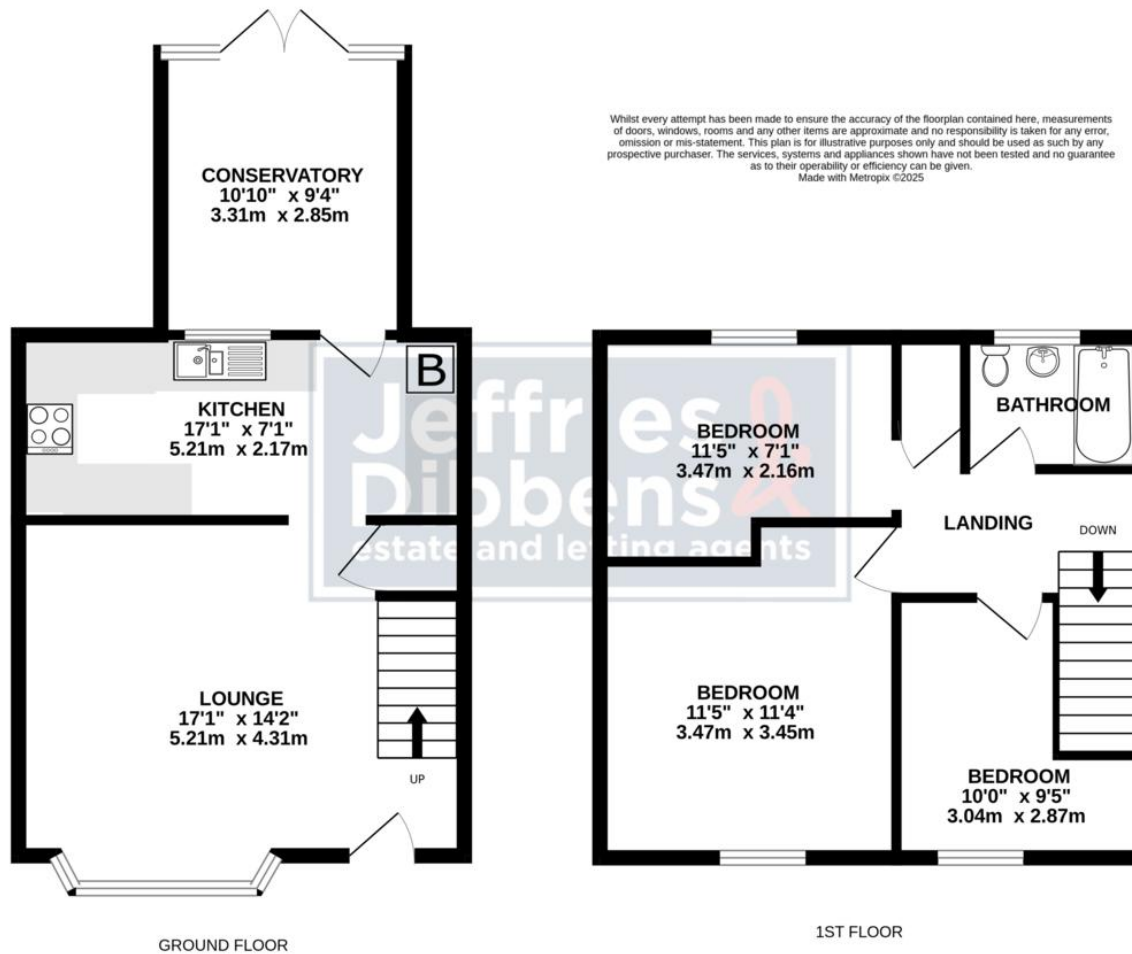
BATHROOM

6' 4" x 5' 1" (1.93m x 1.55m)

REAR GARDEN

West facing.



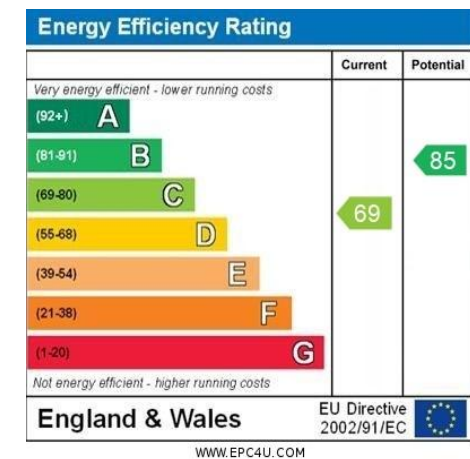


LOCAL AUTHORITY
Havant Borough Council

TENURE
Freehold

COUNCIL TAX BAND
Band B

VIEWINGS
By prior appointment only



**Jeffries
Dibbens**
estate and letting agents

OFFICE ADDRESS
13 North Street, Havant,
Hampshire, PO9 1PW

CONTACT
023 9247 4737
havant@jeffries.co.uk
www.jdea.co.uk

Agents Note: Whilst every care has been taken to prepare these particulars, they are for guidance purposes only. All measurements are approximate and are for general guidance purposes only and whilst every care has been taken to ensure their accuracy, they should not be relied upon and potential buyers/tenants are advised to recheck the measurements.