



£300,000
19 Portsdown View
Bedhampton, PO9 3DQ

PROPERTY SUMMARY

Nestled in this sought-after modern development in Bedhampton, this beautifully presented two-bedroom semi-detached home offers contemporary living in a convenient location. Boasting off-road parking and a South facing rear garden, this property is perfect for first-time buyers, downsizers or as an investment opportunity. There is a stylish, open plan, modern fitted kitchen/diner with integrated appliances, ground floor WC and a bright lounge with double doors opening onto the rear garden. Upstairs, the landing leads to two generous double bedrooms, both with built-in storage, an ensuite to the master and a family bathroom suite. Conveniently located close to excellent transport links, this home truly offers the best of modern living. Contact us today to arrange your internal viewing and experience this fantastic property for yourself.

2



2



1





KITCHEN/DINER 14' 9" x 13' 5" (4.5m x 4.09m)

WC

LOUNGE 14' 9" x 11' 5" (4.5m x 3.48m)

LANDING

BEDROOM ONE 11' 1" x 10' 3" (3.38m x 3.12m)

ENSUITE

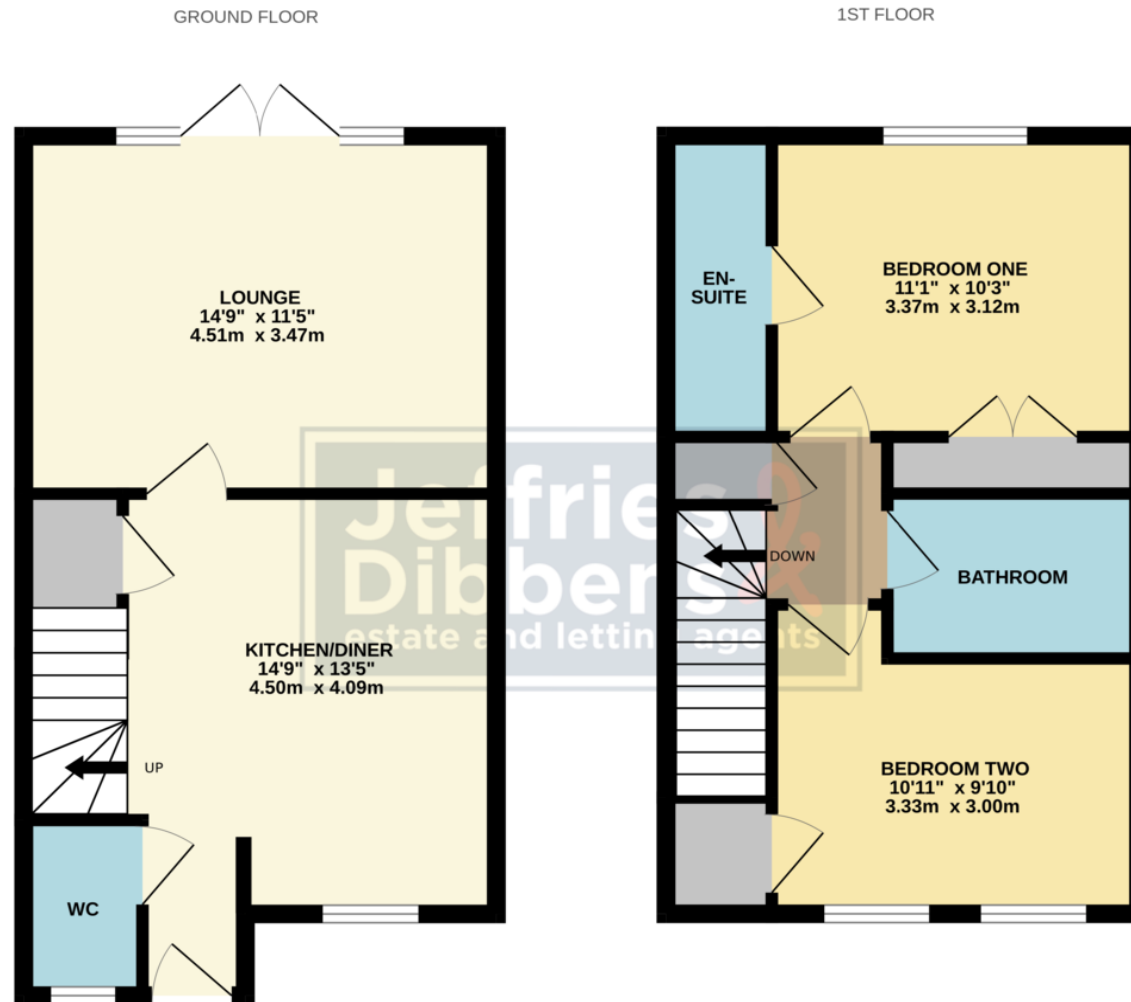
BEDROOM TWO 10' 11" x 9' 10" (3.33m x 3m)

BATHROOM

AGENTS NOTE

We understand there is an annual estate charge of £250





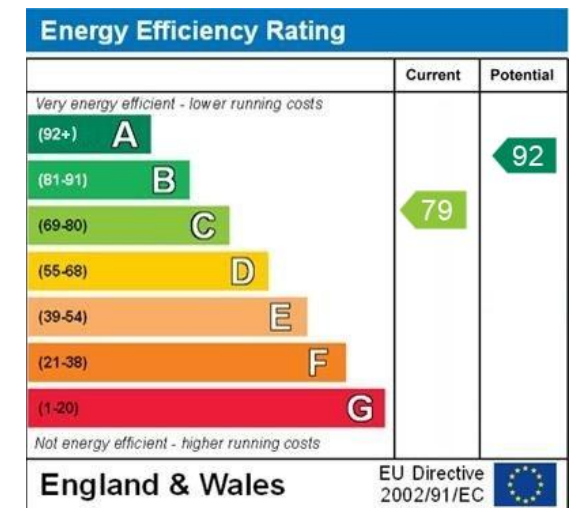
Whilst every attempt has been made to ensure the accuracy of the floorplan contained here, measurements of doors, windows, rooms and any other items are approximate and no responsibility is taken for any error, omission or mis-statement. This plan is for illustrative purposes only and should be used as such by any prospective purchaser. The services, systems and appliances shown have not been tested and no guarantee as to their operability or efficiency can be given.
Made with Metropix ©2024

LOCAL AUTHORITY
Havant Borough Council

TENURE
Freehold

COUNCIL TAX BAND
Band C

VIEWINGS
By prior appointment only



WWW.EPC4U.COM

**Jeffries
Dibbensen**
estate and letting agents

OFFICE ADDRESS
13 North Street, Havant,
Hampshire, PO9 1PW

CONTACT
023 9247 4737
havant@jeffries.co.uk
www.jdea.co.uk

Agents Note: Whilst every care has been taken to prepare these particulars, they are for guidance purposes only. All measurements are approximate and are for general guidance purposes only and whilst every care has been taken to ensure their accuracy, they should not be relied upon and potential buyers/tenants are advised to recheck the measurements.