



£280,000
26 Juniper Square
Havant, PO9 1JA



PROPERTY SUMMARY

Located only a short walk from Havant Town Centre, this three bedroom end terraced house has been through a scheme of renovations over the last 2 years. While not quite complete, the renovations include a full rewire, new kitchen & bathroom, plastering and some new carpets, windows and doors. The seller does have the flooring to complete in the bathroom and ground floor. There is also a ground floor WC that could benefit from refitting. This property benefits from a corner plot with the potential to extend to the rear or side (subject to the usual permissions). This property does come with a garage in a block. An internal viewing is essential to appreciate the work that has gone into this property and the scope to add the finishing touches and decorate according to your taste. Contact us to arrange your appointment.





HALL

WC

KITCHEN/DINER 24' 10" x 9' 9" (7.57m x 2.97m)

LOUNGE 11' 5" x 7' 9" (3.48m x 2.36m)

LANDING

BEDROOM ONE 13' 9" x 9' 11" (4.19m x 3.02m)

BEDROOM TWO 11' 1" x 10' 9" (3.38m x 3.28m)

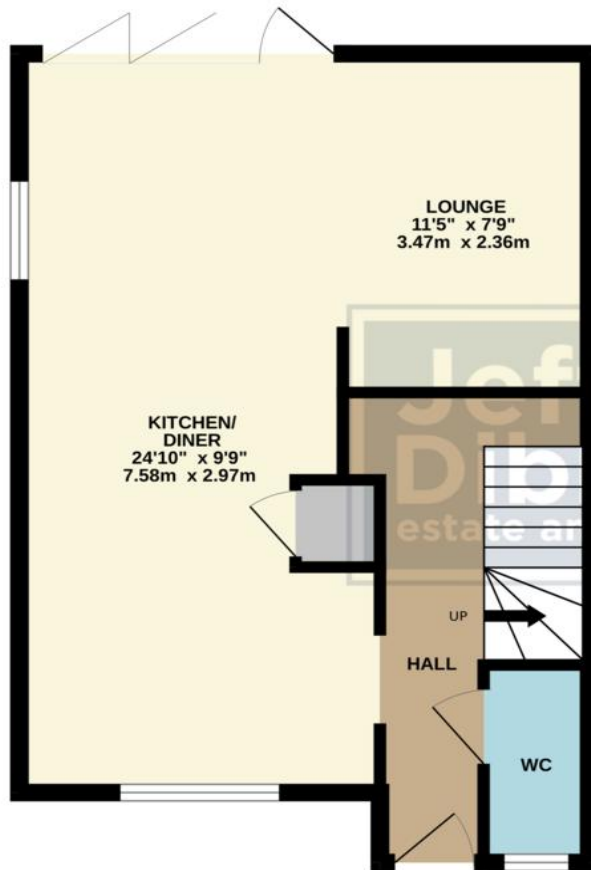
BEDROOM THREE 7' 8" x 7' 9" (2.34m x 2.36m)

BATHROOM

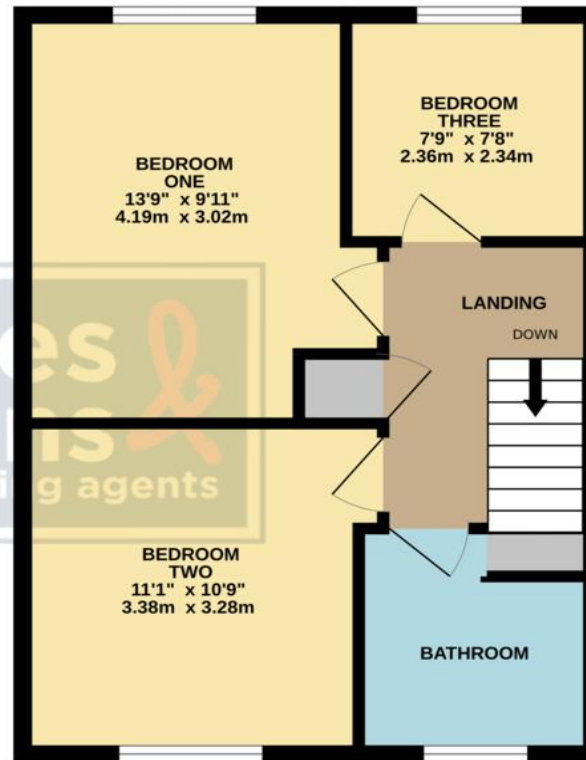
GARAGE



GROUND FLOOR
461 sq.ft. (42.9 sq.m.) approx.



1ST FLOOR
446 sq.ft. (41.4 sq.m.) approx.



TOTAL FLOOR AREA: 907 sq.ft. (84.3 sq.m.) approx.

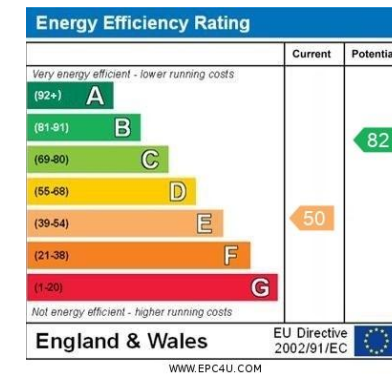
Whilst every attempt has been made to ensure the accuracy of the floorplan contained here, measurements of doors, windows, rooms and any other items are approximate and no responsibility is taken for any error, omission or mis-statement. This plan is for illustrative purposes only and should be used as such by any prospective purchaser. The services, systems and appliances shown have not been tested and no guarantee as to their operability or efficiency can be given.
Made with Metropix ©2024

LOCAL AUTHORITY
Havant Borough Council

TENURE
Freehold

COUNCIL TAX BAND
Band B

VIEWINGS
By prior appointment only



Agents Note: Whilst every care has been taken to prepare these particulars, they are for guidance purposes only. All measurements are approximate and are for general guidance purposes only and whilst every care has been taken to ensure their accuracy, they should not be relied upon and potential buyers/tenants are advised to recheck the measurements

**Jeffries
Dibbens &**
estate and letting agents

OFFICE ADDRESS
13 North Street, Havant,
Hampshire, PO9 1PW

CONTACT
023 9247 4737
havant@jeffries.co.uk
www.jdea.co.uk