



£318,000
8 Dockenfield Close
Havant, PO9 3ST

PROPERTY SUMMARY

Beautifully presented, three bedroom, semi detached family home. This extended contemporary accommodation comprises a porch, open entrance hall, dual aspect living room, extended fitted kitchen/diner, stylish shower room and conservatory, the first floor landing leads to three well proportioned double bedrooms and the modern bathroom suite. Additional benefits include a garage to the rear, a lovely Westerly facing garden and resin frontage. This property must be viewed to appreciate the quality of the work that has modernised this family home. Contact us to arrange your internal appointment.

- 3 
- 2 
- 1 





PORCH

ENTRANCE HALL

LOUNGE 20' 8" x 11' 5" (6.3m x 3.48m)

KITCHEN/DINER 18' 1" x 9' 3" (5.51m x 2.82m)

SHOWER ROOM

CONSERVATORY 9' 8" x 6' 5" (2.95m x 1.96m)

LANDING

BATHROOM

BEDROOM ONE 11' 6" x 11' 5" (3.51m x 3.48m)

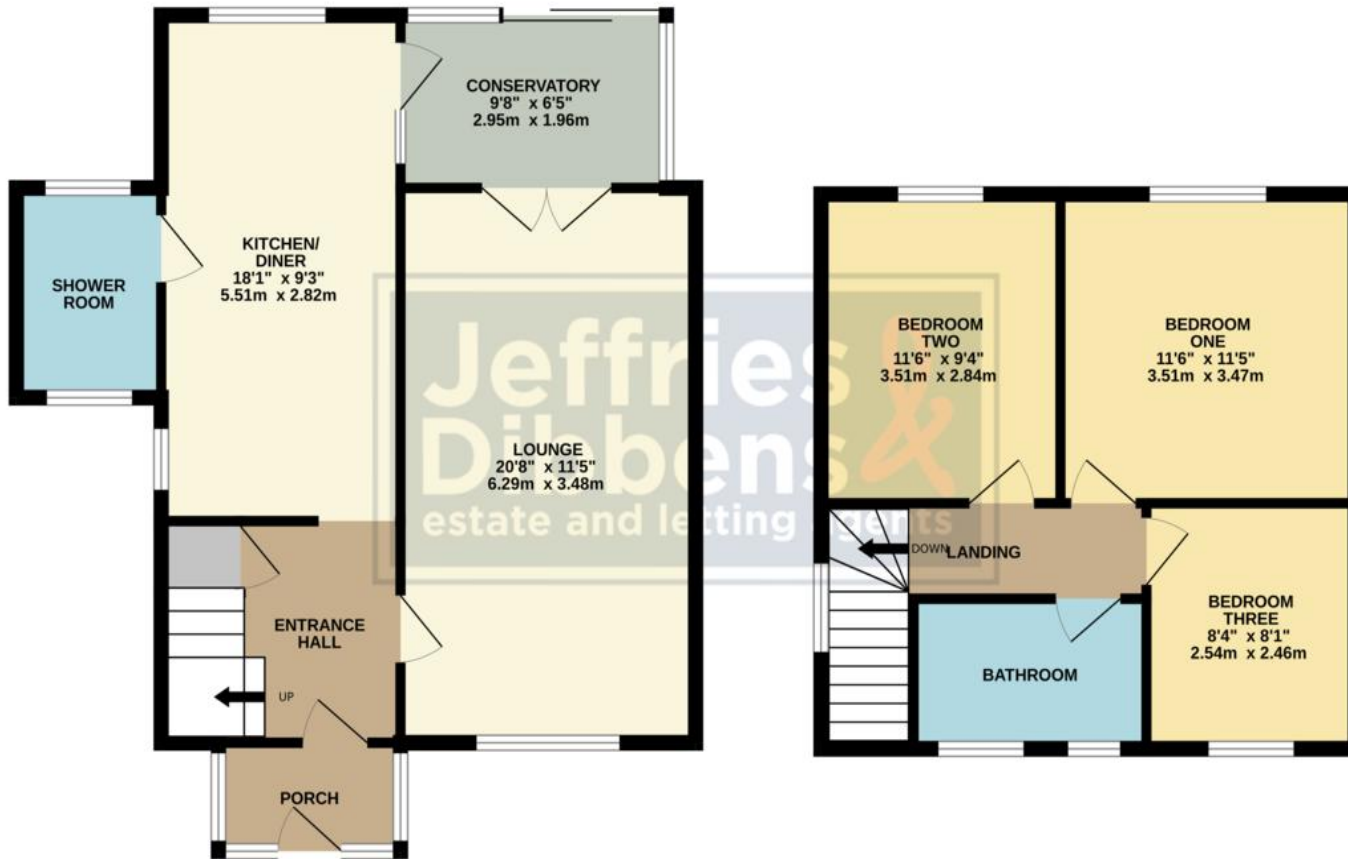
BEDROOM TWO 11' 6" x 9' 4" (3.51m x 2.84m)

BEDROOM THREE 8' 4" x 8' 1" (2.54m x 2.46m)

GARAGE

GROUND FLOOR
624 sq.ft. (57.9 sq.m.) approx.

1ST FLOOR
426 sq.ft. (39.6 sq.m.) approx.



TOTAL FLOOR AREA : 1050 sq.ft. (97.5 sq.m.) approx.

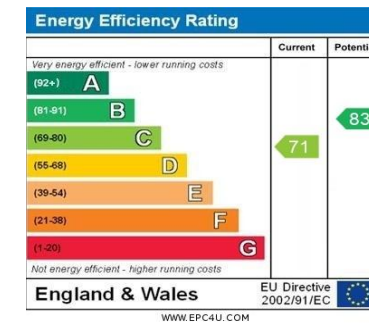
Whilst every attempt has been made to ensure the accuracy of the floorplan contained here, measurements of doors, windows, rooms and any other items are approximate and no responsibility is taken for any error, omission or mis-statement. This plan is for illustrative purposes only and should be used as such by any prospective purchaser. The services, systems and appliances shown have not been tested and no guarantee as to their operability or efficiency can be given.
Made with Metropix ©2024

LOCAL AUTHORITY
Havant Borough Council

TENURE
Freehold

COUNCIL TAX BAND
Band B

VIEWINGS
By prior appointment only



Agents Note: Whilst every care has been taken to prepare these particulars, they are for guidance purposes only. All measurements are approximate and are for general guidance purposes only and whilst every care has been taken to ensure their accuracy, they should not be relied upon and potential buyers/tenants are advised to recheck the measurements



OFFICE ADDRESS
13 North Street, Havant,
Hampshire, PO9 1PW

CONTACT
023 9247 4737
havant@jeffries.co.uk
www.jdea.co.uk