



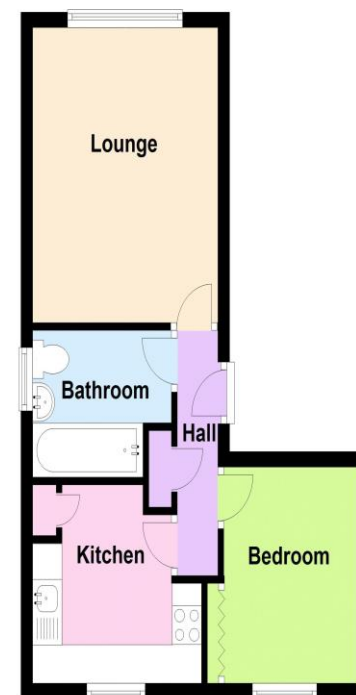
Flat 56, Priory Court , Roots Hall Drive,  
Southend-On-Sea, Essex SS2 6HL

Monthly Rental Of £950

**\*\*Walking Distance To Station\*\*** This one bedroom ground floor purpose built flat is in within a popular development convenient for Prittlewell mainline station and Southend town centre. Providing a good sized lounge, double bedroom, fitted kitchen and white three piece bathroom. Also having the advantage of double glazing and allocated parking. Available to working applicants only.



Ground Floor



Crowstone Estates Ltd Office  
Tel: 01702 333555

516 London Road Westcliff-On-Sea Essex SS0 9LD  
admin@crowstoneestates.com  
www.crowstoneestates.com