



Lexden Close

Wootton Fields, Northampton

oriordanbond
SALES & LETTINGS



Lexden Close

Wootton Fields
NN4 6DU

Price
£625,000

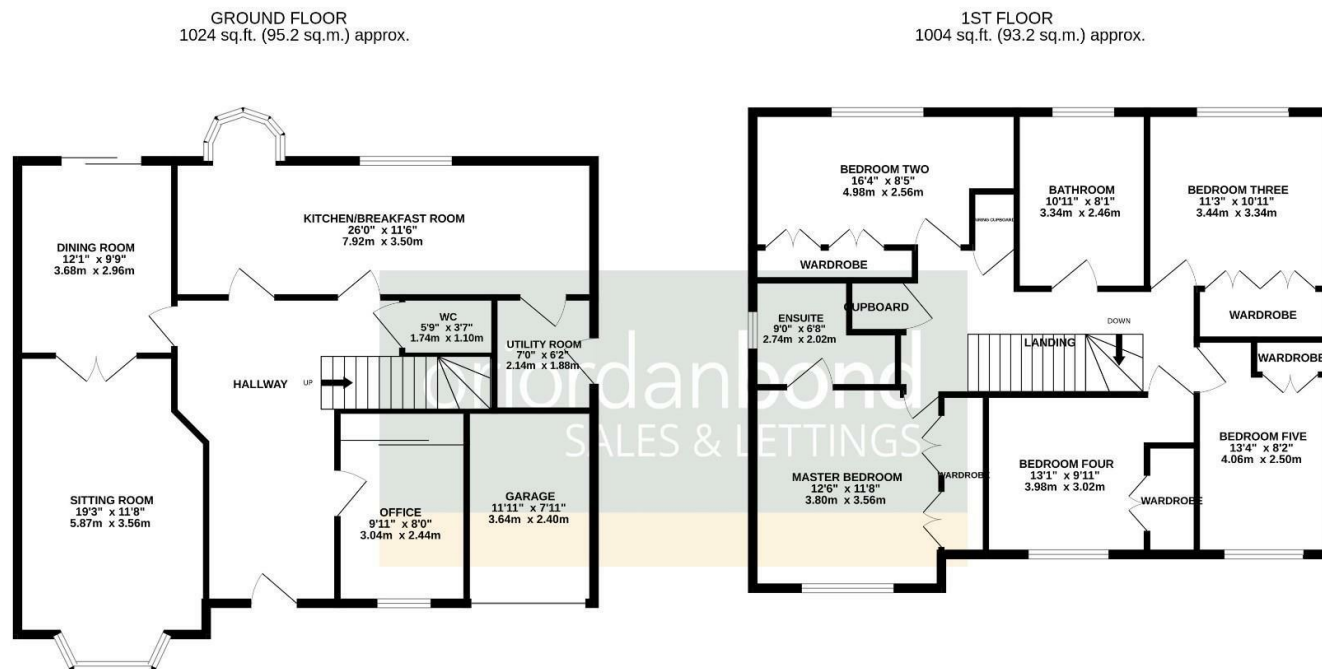
Sat proudly at the end of this popular cul-de-sac is this well presented executive five bedroom detached family home. Built by Messrs David Wilson, the property is located in the sought after area of Wootton Fields, a popular suburb on the south side of Northampton, benefitting from outstanding schools, transport links and local amenities.

The accommodation comprises entrance hall, home office, sitting room, dining room, kitchen/breakfast room, utility and cloakroom/WC. The first floor comprises five double bedrooms, a newly re-fitted en-suite to the master bedroom and a family bathroom. Externally there are front and rear gardens, off road parking a garage. Further benefits include gas radiator heating and uPVC double glazing. (A/2028/M)

- Five bedroom detached home
- Newly re-fitted en-suite to master bedroom
- Three reception rooms
- Gas radiator heating
- Enclosed rear garden
- Driveway and garage







TOTAL FLOOR AREA : 2028 sq.ft. (188.4 sq.m.) approx.

Whilst every attempt has been made to ensure the accuracy of the floorplan contained here, measurements of doors, windows, rooms and any other items are approximate and no responsibility is taken for any error, omission or mis-statement. This plan is for illustrative purposes only and should be used as such by any prospective purchaser. The services, systems and appliances shown have not been tested and no guarantee as to their operability or efficiency can be given.
Made with Metropix ©2025



Additional information

- Council Tax Band: F
- Energy Efficiency Rating: C

Viewing

Viewing strictly by appointment – details below

Disclaimer

O'Riordan Bond Estate Agents Limited has not tested apparatus, equipment, fittings or services and so cannot verify they are in working order. The buyer is advised to obtain verification from their solicitor or surveyor.

O'Riordan Bond Grange Park Sales
01604 432007

grangepark@oriordanbond.co.uk

