



# The Cross

Great Houghton, Northamptonshire

oriordanbond  
SALES & LETTINGS





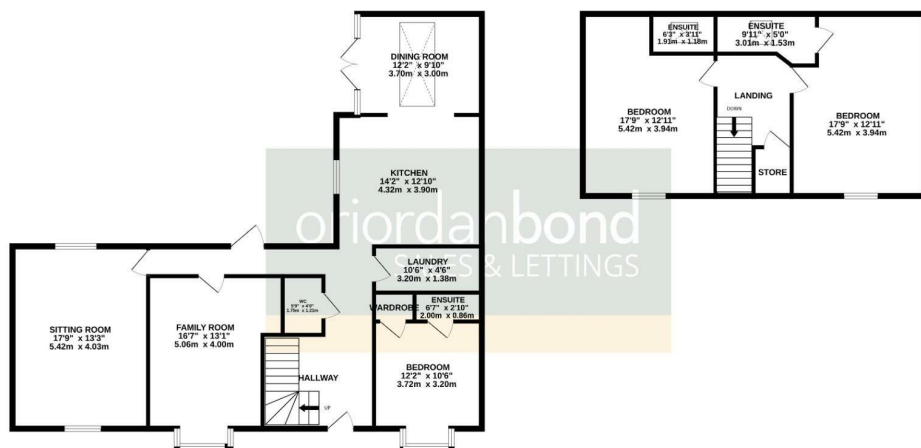
# The Cross

Great Houghton  
NN4 6AS

GUIDE PRICE £550,000

GROUND FLOOR  
1132 sq.ft. (105.1 sq.m.) approx.

1ST FLOOR  
592 sq.ft. (55.0 sq.m.) approx.



TOTAL FLOOR AREA: 1723 sq.ft. (160.1 sq.m.) approx.  
Whilst every attempt has been made to ensure the accuracy of the floorplan contained here, measurements of doors, windows, rooms and any other items are approximate and no responsibility is taken for any error, omission or mis-statement. This plan is for illustrative purposes only and should be used as such by any prospective purchaser. The services, systems and appliances shown have not been tested and no guarantee is given as to their operability or efficiency can be given.  
Made with Metrepx 6/2025

## Additional information

- Council Tax Band:
- Energy Efficiency Rating: D

## Viewing

Viewing strictly by appointment – details below

## Disclaimer

O'Riordan Bond Estate Agents Limited has not tested apparatus, equipment, fittings or services and so cannot verify they are in working order. The buyer is advised to obtain verification from their solicitor or surveyor.

O'Riordan Bond Grange Park Sales  
01604 432007

grangepark@oriordanbond.co.uk

