



Deer Close

Grange Park, Northampton

oriordanbond
SALES & LETTINGS



Deer Close

Grange Park

NN4 5DN

GUIDE PRICE £260,000

A well presented three bedroom family home, situated in a cul-de-sac, within the popular Grange Park estate. Offered for sale with no onward chain, the property is close to the popular Foxfield Country Park, near Woodland View Primary School as well as good road links to J15 for the M1 and A45.

The accommodation comprises entrance hall, cloakroom/WC, sitting room, kitchen open to dining room, three bedrooms and a re-fitted family bathroom. Outside is low maintenance gravelled frontage, an enclosed garden being mainly laid to lawn and access to a garage in a block. Further benefits include uPVC double glazing and gas radiator heating. (B/732/M)

Additional information

- Council Tax Band: C
- Energy Efficiency Rating: C

Viewing

Viewing strictly by appointment – details below

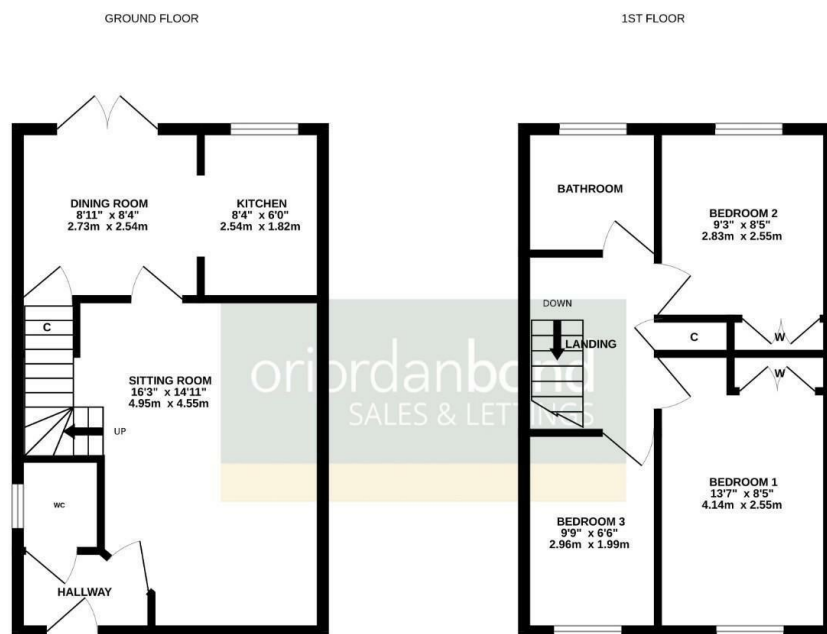
Disclaimer

O'Riordan Bond Estate Agents Limited has not tested apparatus, equipment, fittings or services and so cannot verify they are in working order. The buyer is advised to obtain verification from their solicitor or surveyor.

O'Riordan Bond Grange Park Sales

01604 432007

grangepark@oriordanbond.co.uk



TOTAL FLOOR AREA : 732 sq.ft. (68.0 sq.m.) approx.

Whilst every attempt has been made to ensure the accuracy of the floorplan contained here, measurements of doors, windows, rooms and any other items are approximate and no responsibility is taken for any error, omission or mis-statement. This plan is for illustrative purposes only and should be used as such by any prospective purchaser. The services, systems and appliances shown have not been tested and no guarantee as to their operability or efficiency can be given.
Made with Metagap C2023

